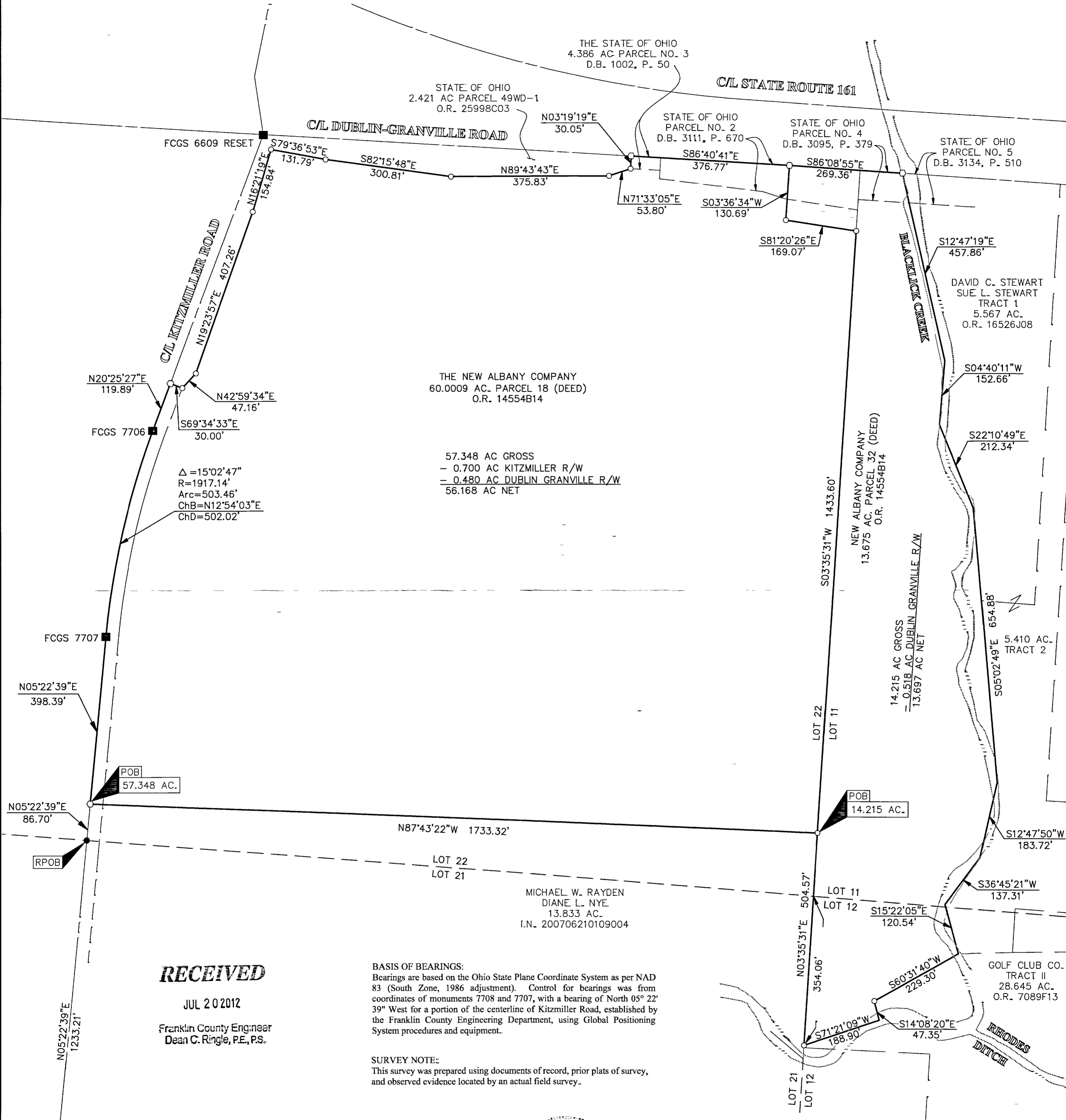


SURVEY OF ACREAGE PARCEL

FARM LOTS 11, 12, AND 22, QUARTER TOWNSHIP 4, TOWNSHIP 2, RANGE 16

UNITED STATES MILITARY LANDS

CITY OF NEW ALBANY, COUNTY OF FRANKLIN, STATE OF OHIO



RECEIVED

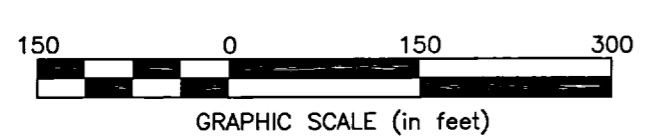
JUL 20 2012

Franklin County Engineer
Dean C. Ringle, P.E., P.S.

BASIS OF BEARINGS:
Bearings are based on the Ohio State Plane Coordinate System as per NAD 83 (South Zone, 1986 adjustment). Control for bearings was from coordinates of monuments 7708 and 7707, with a bearing of North 05° 22' 39" West for a portion of the centerline of Kitzmiller Road, established by the Franklin County Engineering Department, using Global Positioning System procedures and equipment.

SURVEY NOTE:
This survey was prepared using documents of record, prior plats of survey, and observed evidence located by an actual field survey.

- = STONE FND.
 - = MON. FND.
 - = 3/4" I.P. FND.
 - = I.P. SET
 - = MAG. NAIL FND.
 - = MAG. NAIL SET
 - ▲ = R.R. SPK. FND.
 - △ = R.R. SPK. SET
 - ◆ = P.K. NAIL FND.
- I.P. Set are 13/16" I.D. iron pipe with cap inscribed EMHT INC



By Heather L. King 7/20/12
Heather L. King Professional Surveyor No. 8307 Date

EMHT
Evans, Mechwart, Hambleton & Tilton, Inc.
Engineers • Surveyors • Planners • Scientists
5500 New Albany Road, Columbus, OH 43054
Phone: 614.775.4500 Toll Free: 888.775.3648
emht.com

Date: July 11, 2012
Scale: 1" = 150'
Job No: 2012-1012
Sheet: 1 of 1

REVISIONS		
MARK	DATE	DESCRIPTION