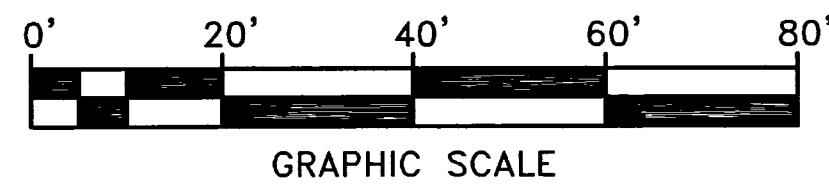


NOTES

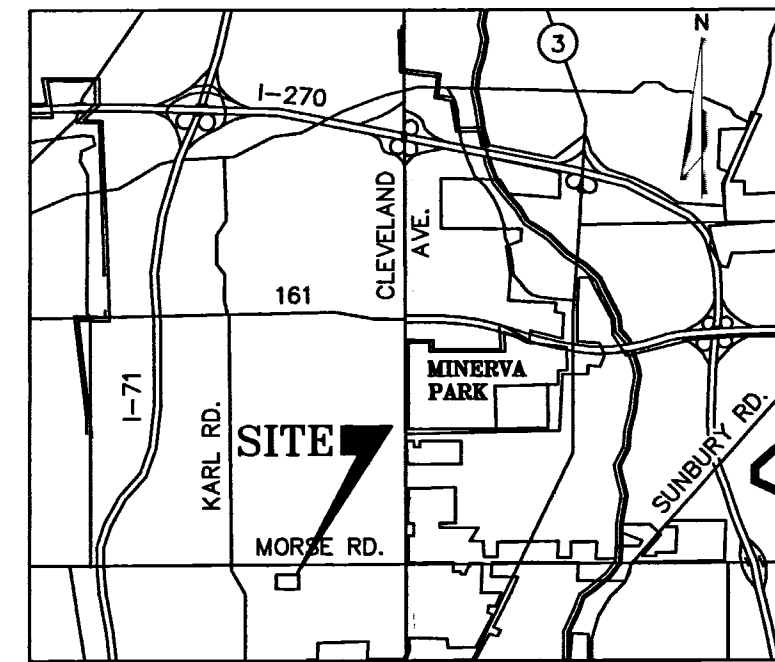
1. This drawing was prepared in reliance on Fidelity National Title Insurance Company, Commitment No. 12-43923 dated April 16, 2012.
2. Utility locations on this survey are reported from field locations or information provided by utility representatives. This does not mean there could not be other utilities in the area.
3. According to F.E.M.A. Flood Insurance Rate Maps #39049C0186K dated June 16, 2011 this site is not in a Special Flood Hazard Area.
- 4) Add 800 to all spot elevations shown to obtain NAVD88 DATUM.
- 5) Iron Pins Set (I.P.S.) are 5/8" rebar, 30" long with yellow plastic caps stamped "SITE ENG INC".
- 6) Bearings are used for the determination of angles only. For the purpose of this survey a bearing of N 86°30'01" W was used on the northerly right-of-way line of New Northland Crossing as shown on P.B. 105, pg. 83 and all other bearings were calculated from this meridian.

Situated in the State of Ohio, County of Franklin, City of Columbus, being in Quarter Township 1, Township 1, Range 18, United States Military Lands, being 1.528± acres all out of that 3.742 acre tract described in a deed to Northland Village Developers LLC of record in Instrument No. 201101060003194 in the Recorder's Office, Franklin County, Ohio.



**MORSE ROAD (R/W VARIES)**

"PUBLIC ROAD" Ord. No. 931-63, P.B. 36, PG. 98



LOCATION MAP  
NO SCALE

LEGEND

- San. — Sanitary Sewer
- St. — Storm Sewer
- W — Water Main
- G — Gas Line
- U/G — Underground Cables
- LE — Landscape Easement
- F — Fiber Optic Cable
- Manhole
- ⊕ Storm Inlet
- ⊕ Fire Hydrant
- ⊕ Light & Utility Poles
- ⊕ Guy Wire
- ⊕ Fence
- ⊕ Sign
- ⊕ Valve Box
- ⊕ Gas Line Marker
- ⊕ Telephone Closure
- I.P.S. ⊕ Iron Pin Set
- I.P.Fd. ● Iron Pin Fd

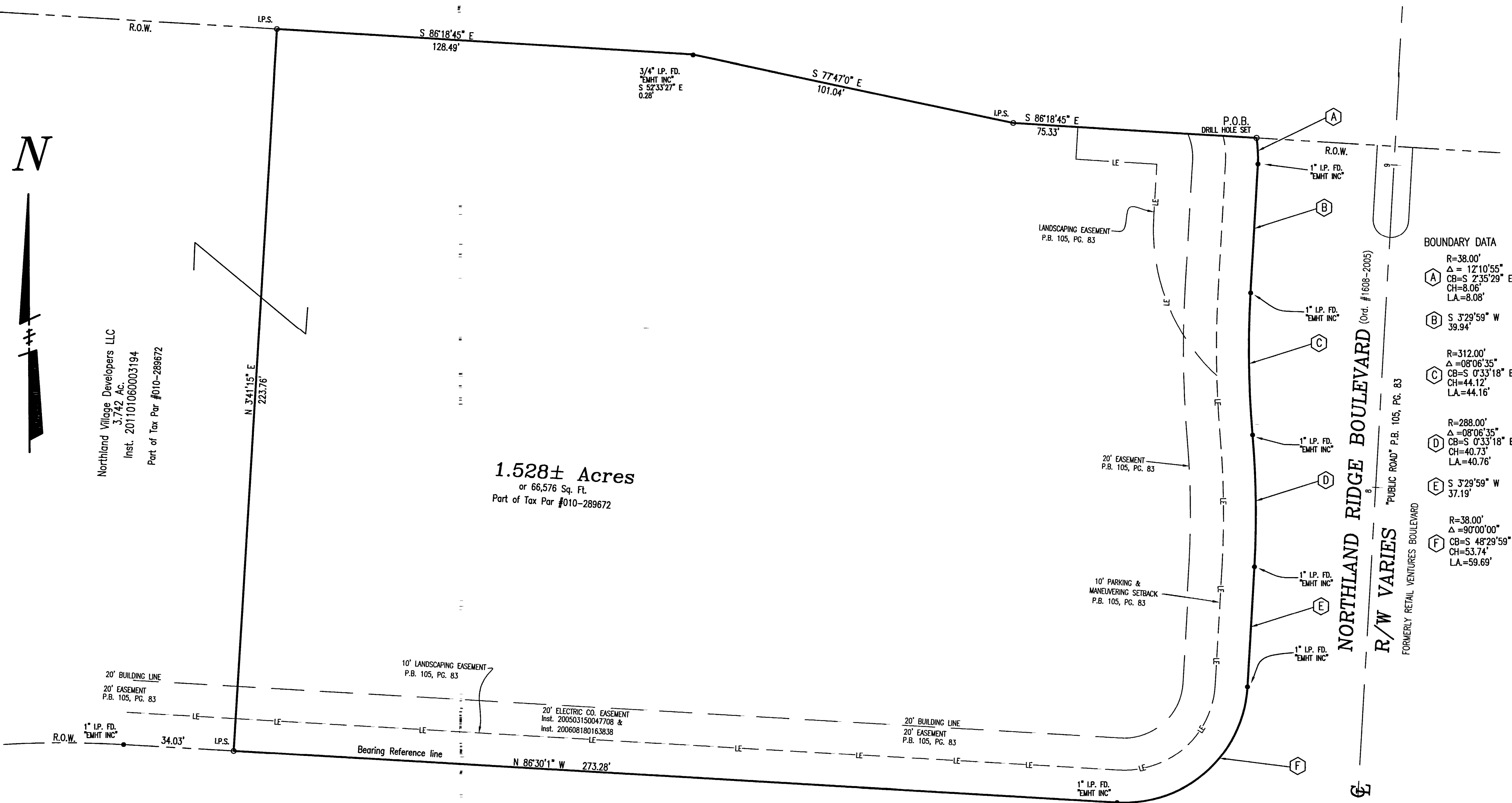
BENCH MARKS NAVD 88 DATUM

SOURCE BENCH MARK, F.C.E. B.M. "B3", Brassplug in the flag pole at the southeast corner of Morse Road and Karl Road, in the north yard of fire house no. 24. ELEV.= 902.418

T.B.M. #1 ~ Top of vent pipe in N.W. corner of the site. ELEV.=904.35

T.B.M. #2 ~ Top of iron pin on north R/W of New Northland Crossing, 34' west of the SW corner of the site. ELEV.=899.56

T.B.M. #3 ~ Mag Nail found along the north edge of concrete sidewalk on north side of New Northland Crossing, 73.58' west of the centerline of Retail Ventures Blvd. ELEV.=895.72



BOUNDARY DATA

A	R=38.00' Δ = 12°10'55" CB=S 7°35'29" E CH=8.06' LA=8.08'
B	S 3°29'59" W 39.94'
C	R=312.00' Δ = 08°06'35" CB=S 0°33'18" E CH=44.12' LA=44.16'
D	R=288.00' Δ = 08°06'35" CB=S 0°33'18" E CH=40.73' LA=40.76'
E	S 3°29'59" W 37.19'
F	R=38.00' Δ = 90°00'00" CB=S 48°29'59" W CH=53.74' LA=59.69'

Northland Village Developers LLC  
3.742 Ac.  
Inst. 201101060003194  
Part of Tax Par #010-289672

1.528± Acres  
or 66,576 Sq. Ft.  
Part of Tax Par #010-289672

**SITE ENGINEERING**  
Incorporated  
Civil Engineers & Surveyors  
7469 East Main Street  
Reynoldsburg, OH 43068  
Phone : (614) 769-9900  
Fax : (614) 769-9902  
eMail : siteeng@ameritech.net

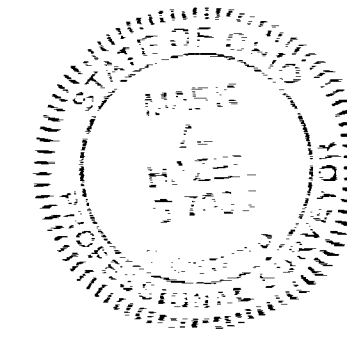
**McDonald's**  
MORSE ROAD, COLUMBUS, OHIO  
L/C: #34-1981  
**ALTA/ACSM LAND TITLE SURVEY**

RECEIVED

JUL 02 2012  
Franklin County Engineer  
Dean C. Ringle, P.E., P.S.

THIS PLAT WAS PREPARED FROM AN ACTUAL FIELD SURVEY DURING JUNE 2012.

SITE ENGINEERING, INC.  
By *Mark A. Hedges* 6-29-12  
Professional Surveyor No. 7039



Any information or data on this drawing is not intended to be suitable for reuse by any person, firm or corporation or any others on extensions of this project or for any use on any other project. Any reuse without written verification and adoption by the Engineer, Architect or Surveyor for the specific purpose intended will be at the users sole risk and without liability or legal exposure to the Engineer, Architect or Surveyor.

S:\PROJECTS\2006\3675\3675-dtd.dwg Jun 28, 2012 4:53pm

DATE:	JUNE 2012
SCALE:	1"=20'
DRAWN BY:	S.E.I.
CHECKED BY:	M.A.H.
JOB NO.:	3675
SHEET:	1 / 2