

D-6-c



Evans, Mechwart, Hambleton & Tilton, Inc.  
Engineers • Surveyors • Planners • Scientists  
5500 New Albany Road, Columbus, OH 43054  
Phone: 614.775.4500 Toll Free: 888.775.3648  
emht.com

# SURVEY OF ACREAGE PARCEL

VIRGINIA MILITARY SURVEY NO. 1434  
CITY OF GROVE CITY, COUNTY OF FRANKLIN, STATE OF OHIO

Date: July 24, 2012

Job No. 2011-0585

Scale: 1" = 80'

- = STONE FND.
- = MON. FND.
- = I.P. FND.
- = I.P. SET
- = MAG. NAIL FND.
- = MAG. NAIL SET
- ▲ = R.R. SPK. FND.
- △ = R.R. SPK. SET
- ◆ = P.K. NAIL FND.

I.P. Set are 13/16" I.D. iron pipe with cap inscribed EMHT INC



GRAPHIC SCALE (in feet)

### SURVEY NOTE:

This survey was prepared using documents of record, prior plats of survey, and observed evidence located by an actual field survey performed by EMH&T in June 2011.

### BASIS OF BEARINGS:

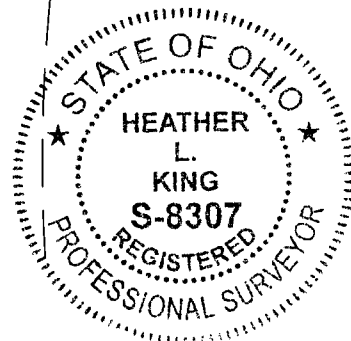
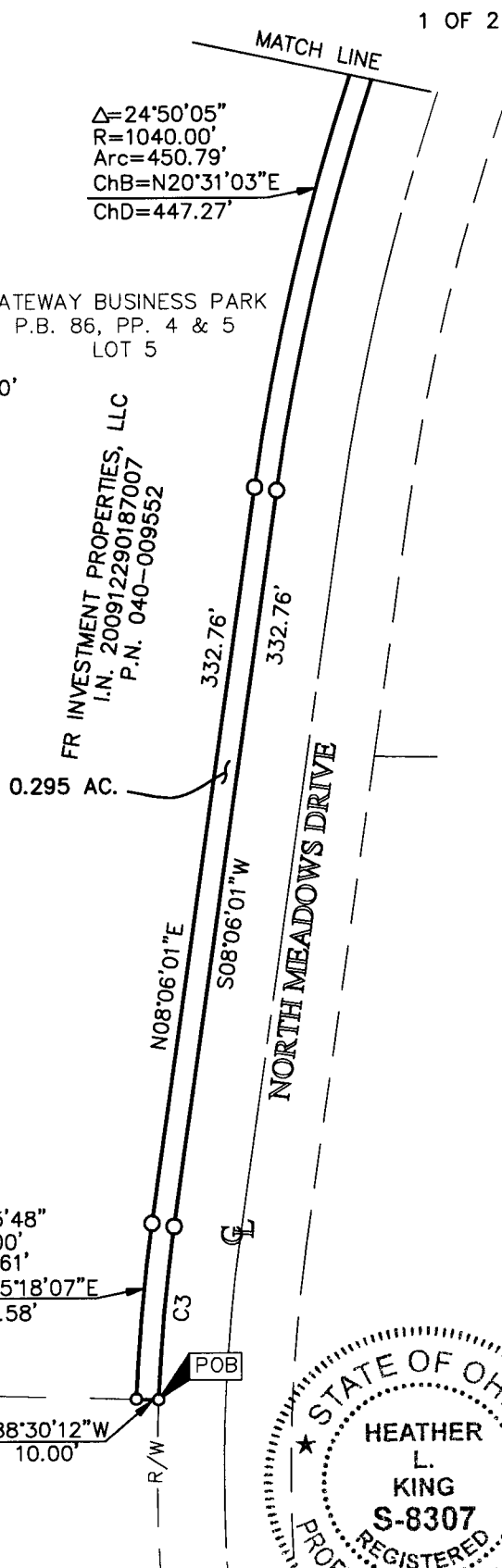
Bearings are based on the Ohio State Plane Coordinate System, South Zone, per NAD83 (1986 adjustment). Control for bearings was from coordinates of monuments FCGS 5548 and FCGS 5539, having a bearing of North 00 degrees 21 minutes 40 seconds East for a portion of the centerline of Hoover Road, established by the Franklin County Engineering Department.

- C1  $\Delta=32^{\circ}27'42''$   
R=64.00'  
Arc=36.26'  
ChB=S16°42'14"W  
ChD=35.78'
- C2  $\Delta=24^{\circ}50'05''$   
R=1030.00'  
Arc=446.45'  
ChB=S20°31'03"W  
ChD=442.96'
- C3  $\Delta=05^{\circ}35'03''$   
R=805.00'  
Arc=78.46'  
ChB=S05°18'29"W  
ChD=78.42'

- $\Delta=05^{\circ}35'48''$   
R=815.00'  
Arc=79.61'  
ChB=N05°18'07"E  
ChD=79.58'

MOUNT CARMEL HEALTH SYSTEM  
I.N. 200506220121351  
P.N. 040-013249  
GATEWAY BUSINESS PARK  
RESUBDIVISION OF LOT NO. 2,  
DEDICATION OF MEADOW POND  
COURT AND EASEMENTS  
P.B. 107, P. 8  
LOT 2A

N88°30'12"W  
10.00'



**RECEIVED**

By Heather L. King 7/27/12 Date  
Heather L. King  
Professional Surveyor No. 8307

J:\20110585\20110585SA\DWG\20110585BNDY\_03.DWG plotted by KING, HEATHER on 7/27/2012 5:41:27 PM last saved by HKING on 7/26/2012 1:30:10 PM Xrefs.

JUL 30 2012

Franklin County Engineer  
Dean C. Ringle, P.E., P.S.

D-6-c



Evans, Mechwart, Hambleton & Tilton, Inc.  
Engineers • Surveyors • Planners • Scientists  
5500 New Albany Road, Columbus, OH 43054  
Phone: 614.775.4500 Toll Free: 888.775.3648  
emht.com

# SURVEY OF ACREAGE PARCEL

VIRGINIA MILITARY SURVEY NO. 1434  
CITY OF GROVE CITY, COUNTY OF FRANKLIN, STATE OF OHIO

Date: July 24, 2012

Job No. 2011-0585

Scale: 1" = 80'

2 OF 2

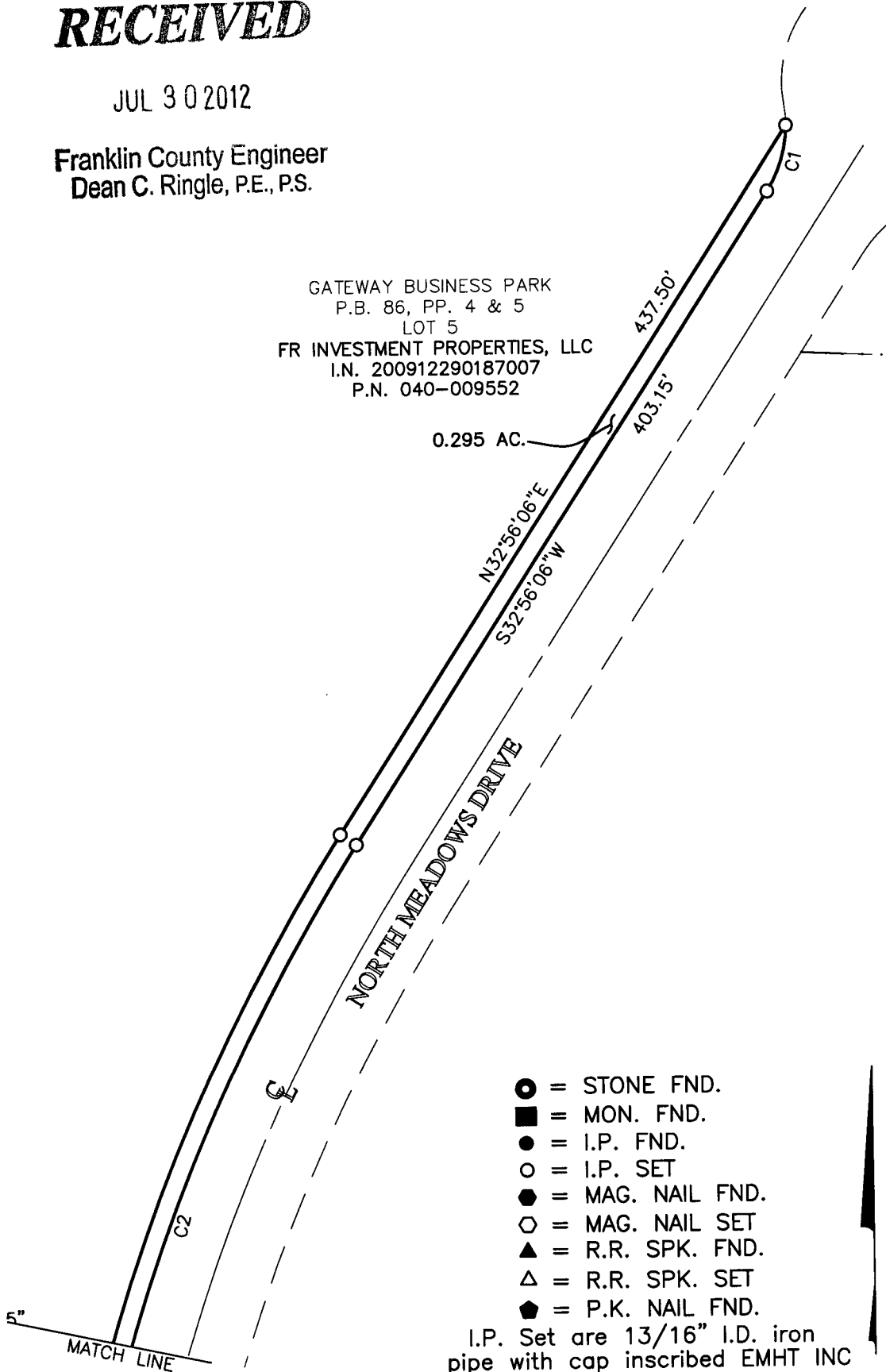
## RECEIVED

JUL 30 2012

Franklin County Engineer  
Dean C. Ringle, P.E., P.S.

GATEWAY BUSINESS PARK  
P.B. 86, PP. 4 & 5  
LOT 5  
FR INVESTMENT PROPERTIES, LLC  
I.N. 200912290187007  
P.N. 040-009552

0.295 AC.



- = STONE FND.
- = MON. FND.
- = I.P. FND.
- = I.P. SET
- = MAG. NAIL FND.
- = MAG. NAIL SET
- ▲ = R.R. SPK. FND.
- △ = R.R. SPK. SET
- ◆ = P.K. NAIL FND.

I.P. Set are 13/16" I.D. iron pipe with cap inscribed EMHT INC



GRAPHIC SCALE (in feet)

J:\20110585\201105855\DWG\20110585BNDY\_03.DWG plotted by KING, HEATHER on 7/27/2012 5:41:37 PM last saved by HKING on 7/26/2012 1:30:10 PM Xrefs: