

D-6-C



Evans, Mechwart, Hambleton & Tilton, Inc.  
Engineers • Surveyors • Planners • Scientists  
5500 New Albany Road, Columbus, OH 43054  
Phone: 614.775.4500 Toll Free: 888.775.3648  
emht.com

# SURVEY OF ACREAGE PARCEL

VIRGINIA MILITARY SURVEY NO. 1434  
CITY OF GROVE CITY, COUNTY OF FRANKLIN, STATE OF OHIO

Date: July 24, 2012

Job No. 2011-0585

Scale: 1" = 50'

GATEWAY BUSINESS PARK  
P.B. 86, PP. 4 & 5  
LOT 6

CROSSROADS OHIO LLC  
I.N. 200512160265086  
P.N. 040-009553

$\Delta=10^{\circ}00'00''$   
 $R=500.00'$   
 $Arc=87.27'$   
 $ChB=N37^{\circ}57'20''E$   
 $ChD=87.16'$

0.022 AC.

$N42^{\circ}57'20''E$   
 $64.02'$   
 $S32^{\circ}57'20''W$   
 $143.16'$

POB

C1  $\Delta=17^{\circ}52'19''$   
 $R=64.00'$   
 $Arc=19.96'$   
 $ChB=N76^{\circ}47'27''W$   
 $ChD=19.88'$

GATEWAY BUSINESS PARK, LLC  
I.N. 200402250040578  
P.N. 040-009551

GATEWAY BUSINESS PARK  
P.B. 86, PP. 4 & 5  
LOT 4

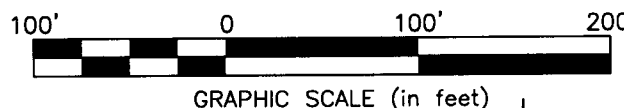
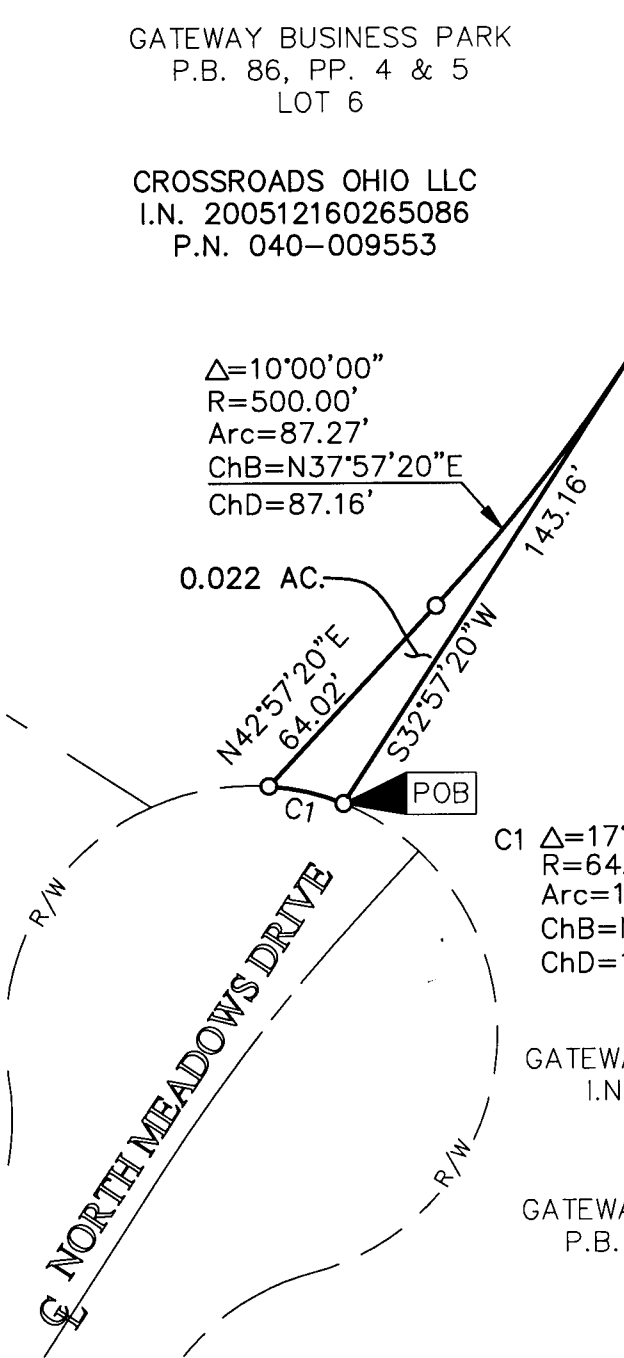
### SURVEY NOTE:

This survey was prepared using documents of record, prior plats of survey, and observed evidence located by an actual field survey performed by EMH&T in June 2011.

### BASIS OF BEARINGS:

Bearings are based on the Ohio State Plane Coordinate System, South Zone, per NAD83 (1986 adjustment). Control for bearings was from coordinates of monuments FCGS 5548 and FCGS 5539, having a bearing of North 00 degrees 21 minutes 40 seconds East for a portion of the centerline of Hoover Road, established by the Franklin County Engineering Department.

J:\20110585\20110585SV\DWG\20110585BNDY\_06.DWG plotted by KING, HEATHER on 7/27/2012 5:49:04 PM last saved by HKING on 7/26/2012 1:36:25 PM Xrefs:



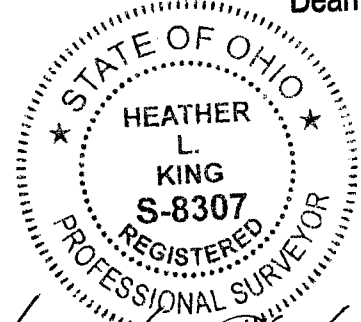
- = STONE FND.
- = MON. FND.
- = I.P. FND.
- = I.P. SET
- = MAG. NAIL FND.
- = MAG. NAIL SET
- ▲ = R.R. SPK. FND.
- △ = R.R. SPK. SET
- = P.K. NAIL FND.

I.P. Set are 13/16" I.D. iron pipe with cap inscribed EMHT INC

**RECEIVED**

JUL 30 2012

Franklin County Engineer  
Dean C. Ringle, P.E., P.S.



By Heather L. King 7/27/12  
Heather L. King  
Professional Surveyor No. 8307  
Date