

D-6-C



Evans, Mechwart, Hambleton & Tilton, Inc.
Engineers • Surveyors • Planners • Scientists
5500 New Albany Road, Columbus, OH 43054
Phone: 614.775.4500 Toll Free: 888.775.3648
emht.com

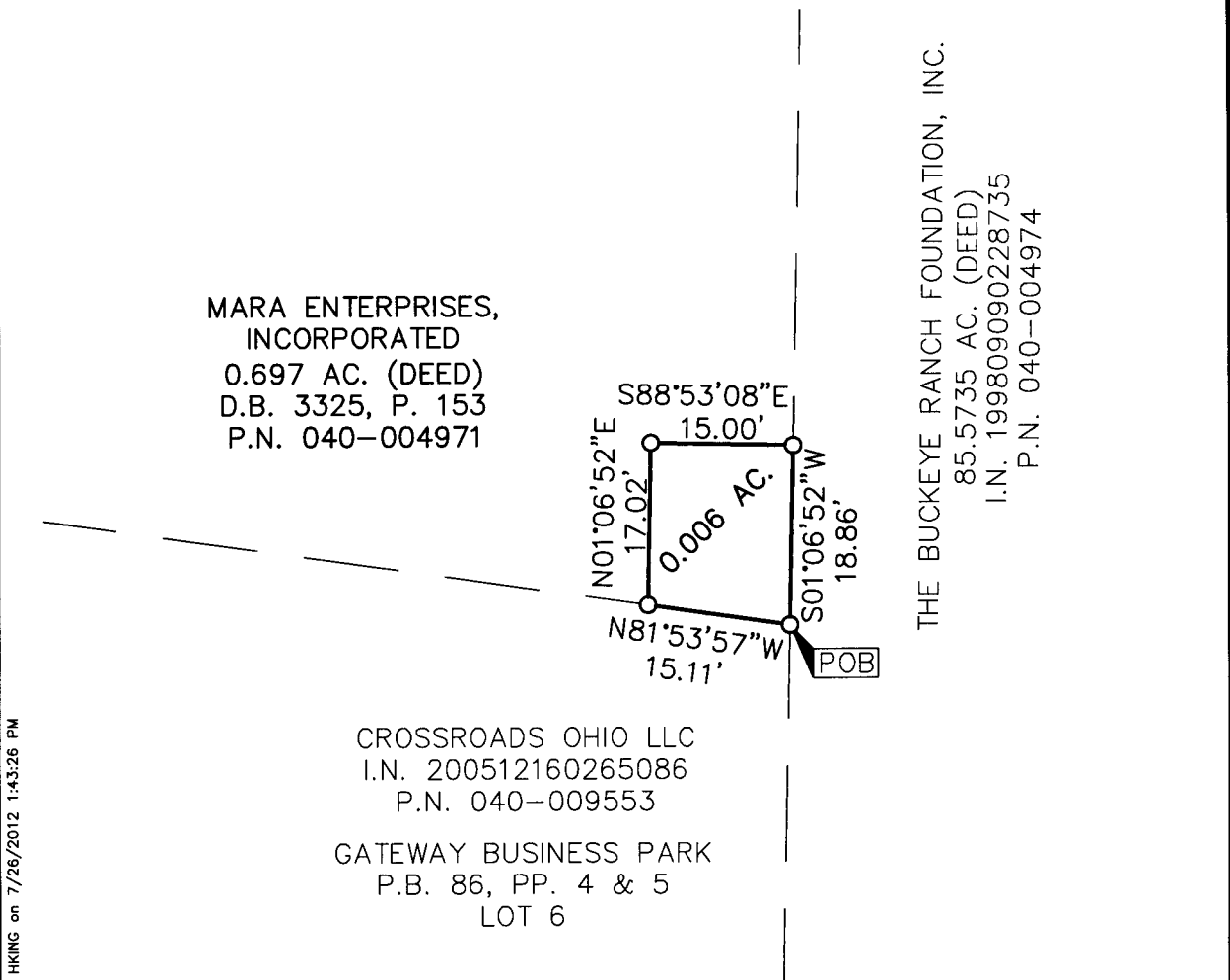
SURVEY OF ACREAGE PARCEL

VIRGINIA MILITARY SURVEY NO. 1434
CITY OF GROVE CITY, COUNTY OF FRANKLIN, STATE OF OHIO

Date: July 24, 2012

Job No. 2011-0585

Scale: 1" = 20'



J:\20110585\20110585SA\DWG\20110585ENDY_09.DWG plotted by KING, HEATHER on 7/26/2012 1:43:45 PM last saved by HKING on 7/26/2012 1:43:26 PM Xrefs:

SURVEY NOTE:

This survey was prepared using documents of record, prior plats of survey, and observed evidence located by an actual field survey performed by EMH&T in June 2011.

BASIS OF BEARINGS:

Bearings are based on the Ohio State Plane Coordinate System, South Zone, per NAD83 (1986 adjustment). Control for bearings was from coordinates of monuments FCGS 5548 and FCGS 5539, having a bearing of North 00 degrees 21 minutes 40 seconds East for a portion of the centerline of Hoover Road, established by the Franklin County Engineering Department.

- = STONE FND.
- = MON. FND.
- = I.P. FND.
- = I.P. SET
- = MAG. NAIL FND.
- = MAG. NAIL SET
- ▲ = R.R. SPK. FND.
- △ = R.R. SPK. SET
- = P.K. NAIL FND.

I.P. Set are 13/16" I.D. iron pipe with cap inscribed EMHT INC



GRAPHIC SCALE (in feet)

RECEIVED

JUL 30 2012



By *Heather L. King* Date *7/27/12*

Heather L. King
Professional Surveyor No. 8307

Date

Franklin County Engineer
Dean C. Ringle, P.E., P.S.