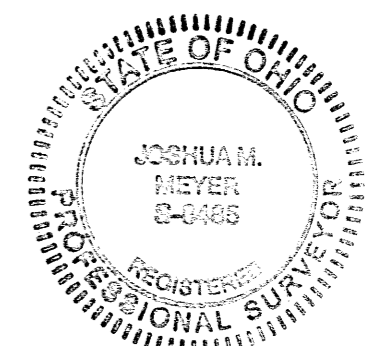
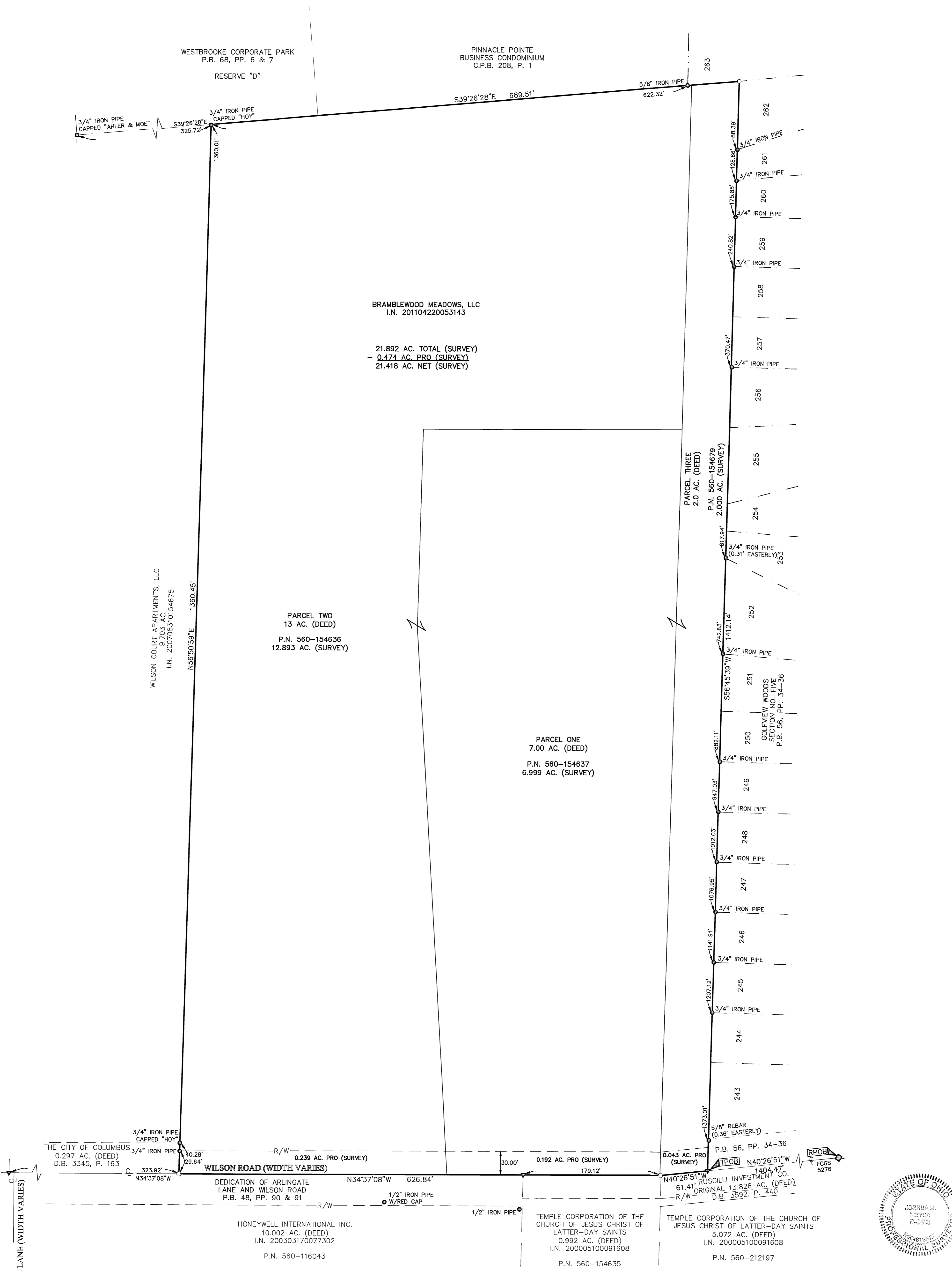


SURVEY OF ACREAGE TRACT

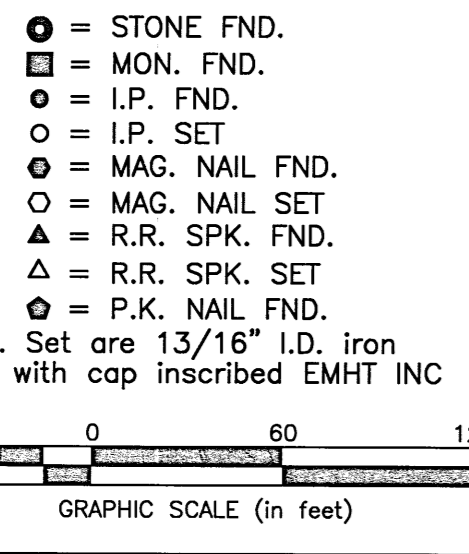
SURVEY NUMBER 544

VIRGINIA MILITARY DISTRICT

CITY OF COLUMBUS, COUNTY OF FRANKLIN, STATE OF OHIO



By Joshua M. Meyer 6-21-2012
 Joshua M. Meyer
 Professional Surveyor No. 8485 Date



REFERENCE DOCUMENTS USED:
Deeds and Plats shown hereon

SURVEY NOTE:
This survey was prepared using documents of record, prior plats of survey, and observed evidence located by an actual field survey in May and June 2012.

BASIS OF BEARINGS:
The bearings shown on this plat are based on the Ohio State Plane Coordinate System, South Zone, NAD83 (NSRS2007). Said bearings originated from a field traverse which was tied (referenced) to said coordinate system by GPS observations and observations of selected Franklin County Geodetic Survey Monuments FCGS6654 RESET and FCGS407. The portion of the centerline of Wilson Road, having a bearing of North 34°37'08" West and monumented as shown hereon, is designated the "basis of bearing" for this survey.

EMHT		Date: June 18, 2012
Evans, Mechwart, Hamilton & Iltis, Inc. Engineers • Surveyors • Planners • Scientists 5500 New Albany Road, Columbus, OH 43054 Phone: 614.775.4500 Toll Free: 888.775.3648 emht.com		Scale: 1" = 60'
		Job No: 20120735
		Sheet: 1 of 1
REVISIONS		
MARK	DATE	DESCRIPTION
JMM	6/21	Added PRO acreage breakdown