

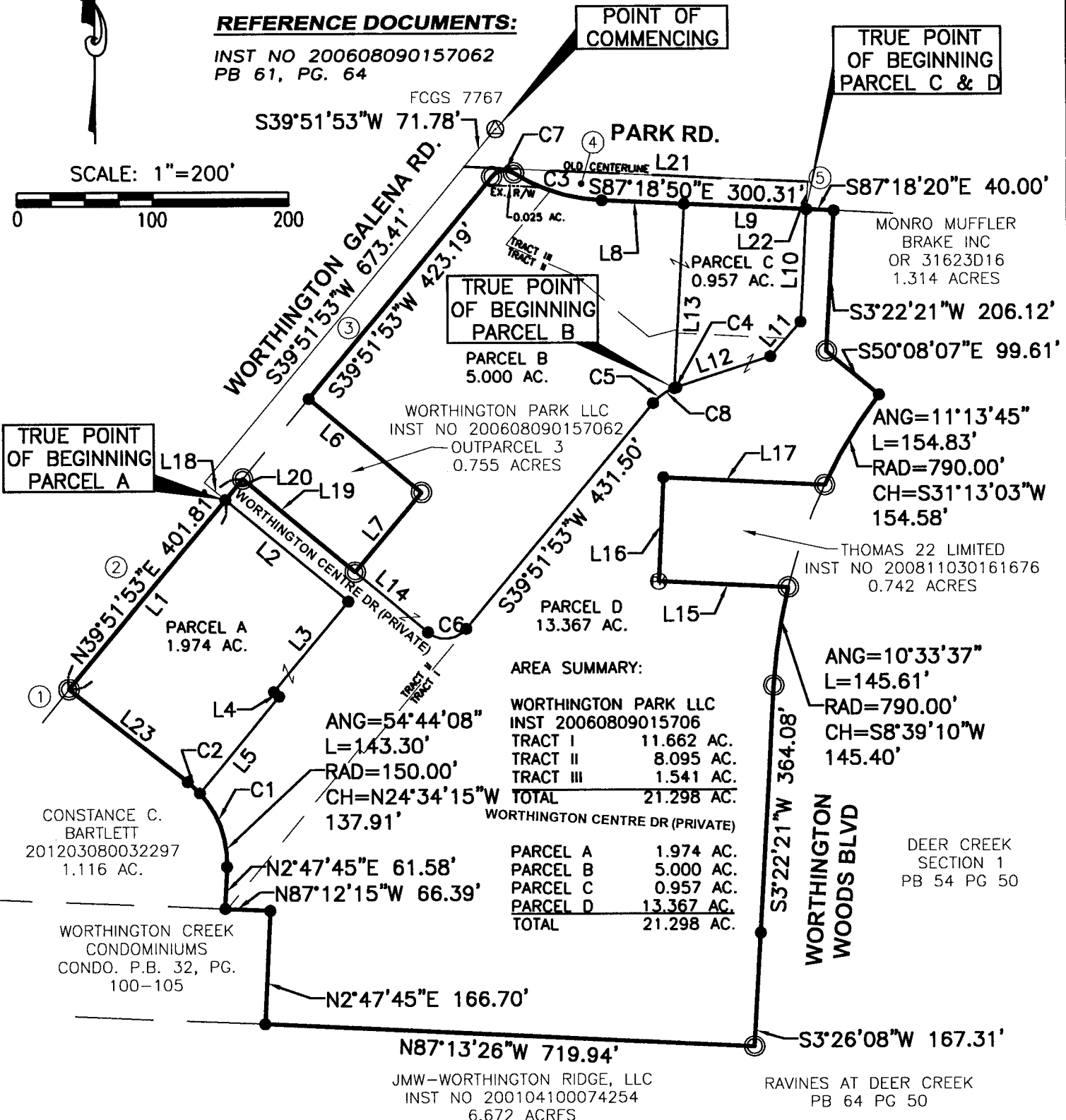
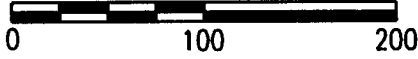
SURVEY DATA:

HORIZONTAL DATUM - BASED UPON THE OHIO STATE PLANE COORDINATE SYSTEM, SOUTH ZONE, NAD83 (ODOT VRS). SAID BEARINGS ORIGINATED FROM SAID COORDINATE SYSTEM BY GPS OBSERVATIONS. THE BEARING ON THE EAST RIGHT OF WAY LINE OF WORTHINGTON GALENA ROAD, BEING S39°51'53"W, IS DESIGNATED THE 'BASIS OF BEARING' FOR THIS SURVEY.

REFERENCE DOCUMENTS:

INST NO 200608090157062
PB 61, PG. 64

SCALE: 1"=200'



SURVEY NOTES:

IRON PINS SET ARE 5/8" REBAR, 30" IN LENGTH WITH A PLASTIC PLUG PLACED ON TOP INSCRIBED WITH THE NAME "WOOLPERT". UNLESS OTHERWISE NOTED HEREON.

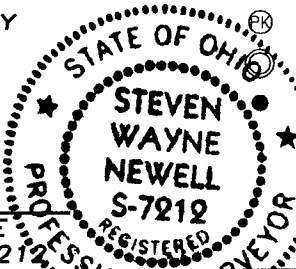
PROPERTY CORNERS FOUND ARE IN GOOD CONDITION UNLESS OTHERWISE NOTED HEREON.

CERTIFICATION:

THIS DRAWING BASED ON A SURVEY PERFORMED BY WOOLPERT, INC. IN APRIL 2012.

WOOLPERT, INC.

STEVEN W. NEWELL
OHIO REGISTERED PROFESSIONAL SURVEYOR NO. 7212



RECEIVED

JUN 01 2012

Franklin County
Dean C. ...
LEGEND

- PK NAIL FOUND
- 3/4" IRON PIPE FOUND (NO CAP)
- 5/8" IRON PIN SET WITH ID CAP

<p>2780 Airport Drive Suite 100 Columbus, OH 43219 614.476.6000 FAX: 614.476.6225</p>	<p>SURVEY EXHIBIT 21.298 ACRE TRACT</p> <p>QTR. TWP. 1, TWP. 2, RANGE 18, U.S.M.L. CITY OF COLUMBUS FRANKLIN COUNTY, OHIO</p>	<p>PROJECT NO. 72368</p> <p>DATE 05/25/12</p> <p>DR. JDH</p> <p>SHT. # 1 of 2</p>
	<p>DATE 05/30/12</p>	

LINE TABLE		
LINE #	LENGTH	DIRECTION
L1	361.81	N39°51'53"E
L2	234.97	S50°08'07"E
L3	171.94	N39°53'00"E
L4	10.14	S50°07'00"E
L5	184.17	S39°53'00"W
L6	215.00	N50°08'07"W
L7	153.00	N39°51'53"E
L8	120.36	S87°18'50"E
L9	179.95	S87°18'50"E
L10	164.71	N3°22'21"E
L11	67.45	N41°21'19"E
L12	145.56	N71°52'08"E

LINE TABLE		
LINE #	LENGTH	DIRECTION
L13	270.33	S3°22'21"W
L14	138.67	S50°08'07"E
L15	189.87	S87°13'26"E
L16	153.62	S2°46'34"W
L17	236.81	N87°13'26"W
L18	40.00	N50°08'07"W
L19	215.00	S50°08'07"E
L20	40.00	S39°51'53"W
L21	504.82	S87°18'51"E
L22	40.01	S3°22'16"W
L23	220.57	N51°56'15"W

CURVE TABLE					
CURVE	DELTA	LENGTH	RADIUS	CHORD	CH LENGTH
C1	45°20'33"	118.71	150.00	N19°52'28"W	115.63
C2	9°23'35"	24.59	150.00	N47°14'32"W	24.56
C3	28°58'50"	137.07	271.00	S72°43'41"E	135.62
C4	2°29'18"	3.26	75.00	S70°37'27"W	3.26
C5	29°30'55"	38.63	75.00	S54°37'21"W	38.21
C6	90°00'00"	62.83	40.00	N84°51'53"E	56.57
C7	82°01'29"	35.79	25.00	S80°52'37"W	32.81
C8	32°00'13"	41.89	75.00	N55°52'00"E	41.35

RIGHT OF WAY DOCUMENTS:

- 1 CITY OF COLUMBUS
OR 8254H11
0.227 ACRES
 - 2 CITY OF COLUMBUS
OR 10485D15
0.514 ACRES
 - 3 CITY OF COLUMBUS
INST NO 199911080280467
0.411 ACRES
- CITY OF COLUMBUS
INST NO 199911080280466
0.332 ACRES
- CITY OF COLUMBUS
INST NO 199911080280467
0.037 ACRES

RECEIVED

JUN 01 2012

Franklin County Engineer
Dean C. Ringle, P.E., P.S.



2780 Airport Drive
Suite 100
Columbus, OH 43219
614.476.6000
FAX: 614.476.6225

SURVEY EXHIBIT
21.298 ACRE TRACT
QTR. TWP. 1, TWP. 2, RANGE 18, U.S.M.L.
CITY OF COLUMBUS
FRANKLIN COUNTY, OHIO

PROJECT NO.
72368
DATE 5/25/12
DR. JDH
SHT. # 2 of 2