

PROJ. NO: CO20080254
 FILE NO: 46
 DRAWN BY: AVP
 CHKD BY: BPB



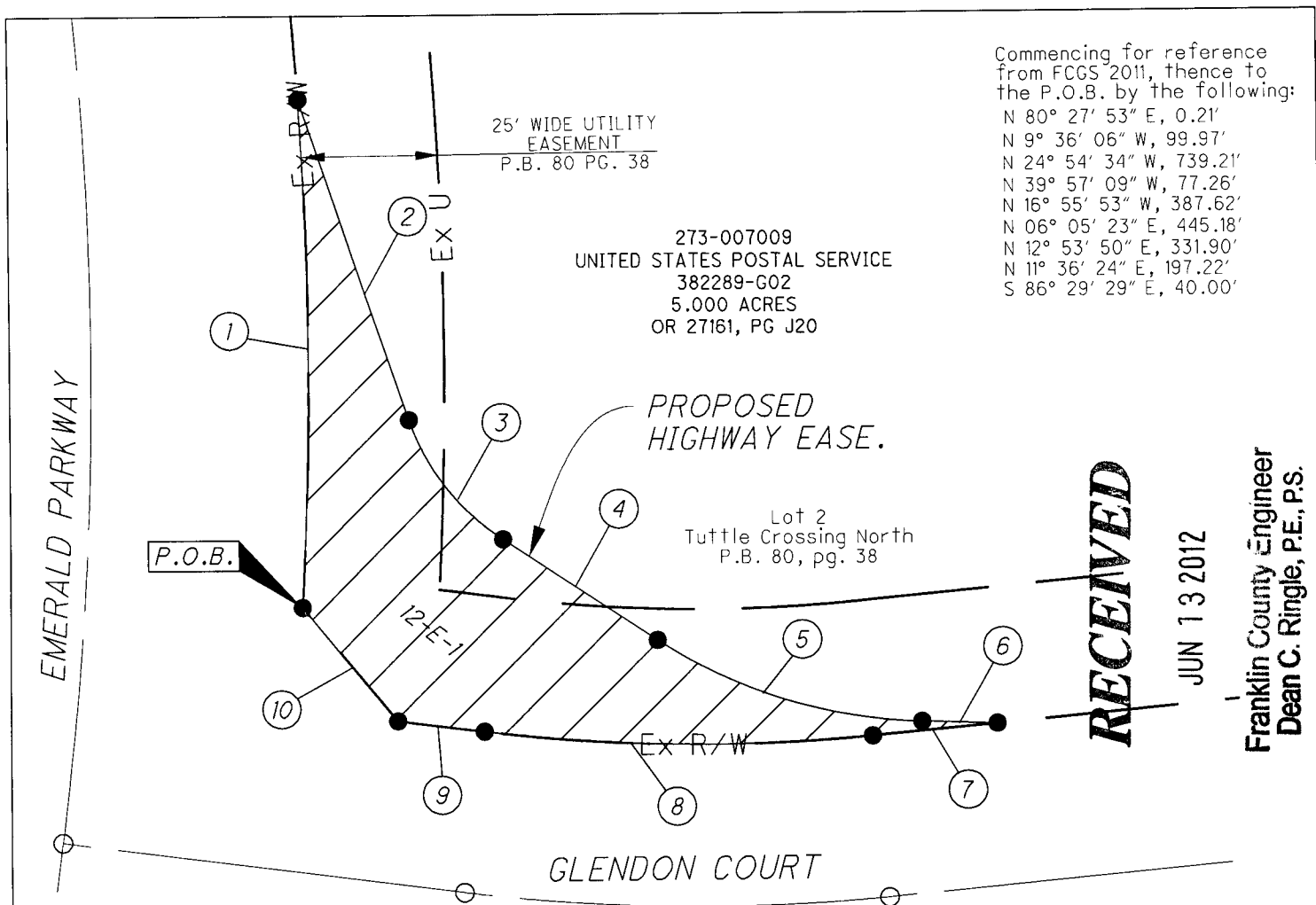
AMERICAN
STRUCTUREPOINT
 INC.

2550 CORPORATE EXCHANGE DR, STE 300
 COLUMBUS, OH 43231
 TEL 614.901.2235 FAX 614.901.2236
 www.structurepoint.com

EXHIBIT "B"
 PARCEL 12-E-1

0.077 ACRES
 PERPETUAL HIGHWAY
 EASEMENT FOR ROAD
 CONSTRUCTION,
 UTILITIES, DRAINAGE
 AND GRADING

DUBLIN, OHIO



Commencing for reference from FCGS 2011, thence to the P.O.B. by the following:
 N 80° 27' 53" E, 0.21'
 N 9° 36' 06" W, 99.97'
 N 24° 54' 34" W, 739.21'
 N 39° 57' 09" W, 77.26'
 N 16° 55' 53" W, 387.62'
 N 06° 05' 23" E, 445.18'
 N 12° 53' 50" E, 331.90'
 N 11° 36' 24" E, 197.22'
 S 86° 29' 29" E, 40.00'

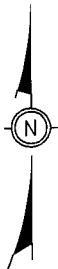
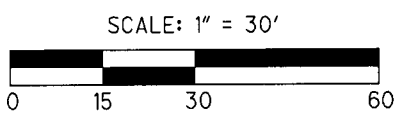
273-007009
 UNITED STATES POSTAL SERVICE
 382289-G02
 5.000 ACRES
 OR 27161, PG J20

RECEIVED

JUN 13 2012

Franklin County Engineer
 Dean C. Ringle, P.E., P.S.

● = IRON PIN SET
 ○ = IRON PIN FOUND
 I.P. SET ARE 5/8" I.D.
 IRON PIN 30" LONG WITH
 CAP INSCRIBED "ASI PS-8438"



- ① - CH. = N 00° 07' 23" W
 CH L. = 93.74'
 R = 740.00'
 ARC L. = 93.80'
 Δ = 07° 15' 46"
- ② - S 18° 40' 34" E, 62.58'
- ③ - CH. = S 37° 38' 59" E
 CH L. = 27.96'
 R = 43.00'
 ARC L. = 28.48'
 Δ = 37° 56' 48"
- ④ - S 56° 37' 24" E, 33.83'
- ⑤ - CH. = S 72° 26' 01" E
 CH L. = 50.68'
 R = 93.00'
 ARC L. = 51.33'
 Δ = 31° 37' 14"
- ⑥ - S 88° 14' 38" E, 13.82'
- ⑦ - S 84° 30' 53" W, 22.95'
- ⑧ - CH. = N 89° 06' 06" W
 CH L. = 71.15'
 R = 320.00'
 ARC L. = 71.30'
 Δ = 12° 45' 57"
- ⑨ - N 82° 43' 08" W, 16.01'
- ⑩ - N 39° 36' 18" W, 27.33'

BASIS OF BEARING:

ALL BEARINGS SHOWN ARE FOR PROJECT USE ONLY.
 BEARINGS SHOWN HEREIN ARE BASED ON GRID NORTH AND ARE REFERENCED TO THE OHIO STATE PLANE COORDINATE SYSTEM, SOUTH ZONE AND THE NORTH AMERICAN DATUM OF 1983 (1986 ADJUSTMENT), AS ESTABLISHED UTILIZING A GPS SURVEY BETWEEN FRANKLIN COUNTY MONUMENTS "FCGS 2213" AND "FCGS 4412 RESET".

I HEREBY CERTIFY THAT:
 THIS DRAWING REPRESENTS THE RESULTS OF AN ACTUAL FIELD SURVEY OF THE PREMISES PERFORMED BY DYNOTEC, INC. IN DECEMBER 2008. THIS DRAWING IS CORRECT TO THE BEST OF MY KNOWLEDGE AND BELIEF.

Brian P. Bingham
 BRIAN P. BINGHAM, P.S. NO. 8438
 AMERICAN STRUCTUREPOINT, INC.

9/29/2011
 DATE



SITUATED IN THE STATE OF OHIO, COUNTY OF FRANKLIN, CITY OF DUBLIN, VIRGINIA MILITARY SURVEY NUMBER 3011, AND BEING A PART OF LOT 2 OF TUTTLE CROSSING NORTH, OF RECORD IN PB 80, PG 38.