



Evans, Mechwart, Hambleton & Tilton, Inc.
 Engineers • Surveyors • Planners • Scientists
 5500 New Albany Road, Columbus, OH 43054
 Phone: 614.775.4500 Toll Free: 888.775.3648

emht.com

SURVEY OF ACREAGE PARCEL

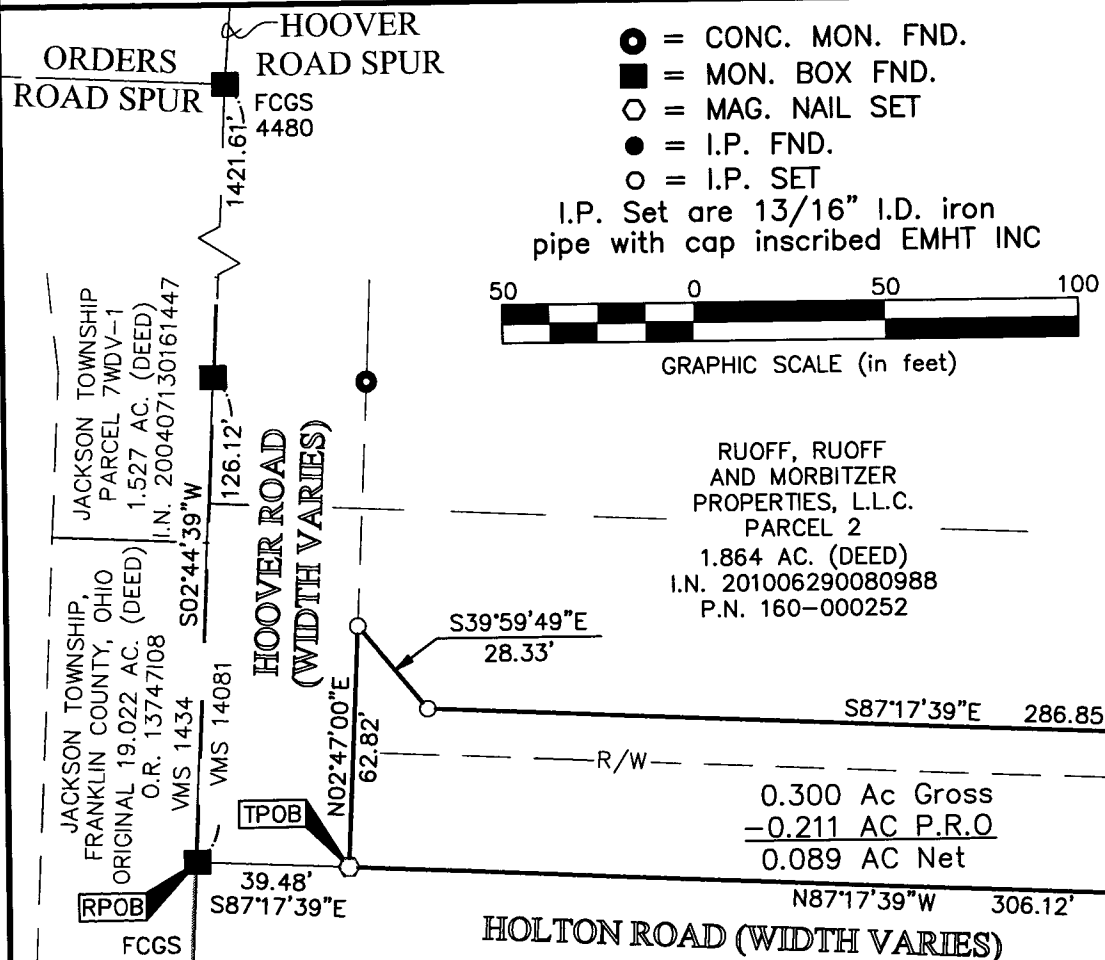
VIRGINIA MILITARY SURVEY NUMBERS 14081 AND 6840

TOWNSHIP OF JACKSON, COUNTY OF FRANKLIN, STATE OF OHIO

Date: April 20, 2012

Scale: 1" = 50'

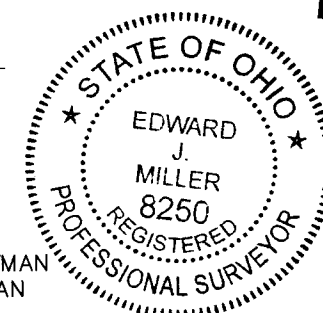
Job No. 2012-0197



BASIS OF BEARINGS:
 Bearings are based on the Ohio State Plane Coordinate System, South Zone, per NAD83 (1986 adjustment). Control for bearings was from coordinates of monuments FC GS 5548 and FC GS 5539, having a bearing of North 00° 21' 40" East for a portion of the centerline of Hoover Road, established by the Franklin County Engineering Department.

SURVEY NOTE:
 This survey was prepared using documents of record, prior plats of survey, and observed evidence located by an actual field survey.

By Edward J. Miller Date 4/20/12
 Professional Surveyor No. 8250



RECEIVED

APR 23 2012

J:\20120197\20120197SV\DWG\20120197BNDY_02.DWG plotted by KING, HEATHER on 4/20/2012 1:12:24 PM last saved by HKING on 4/20/2012 1:08:04 PM
 Xrefs:

Franklin County Engineer
 Dean C. Ringle, P.E., P.S.