

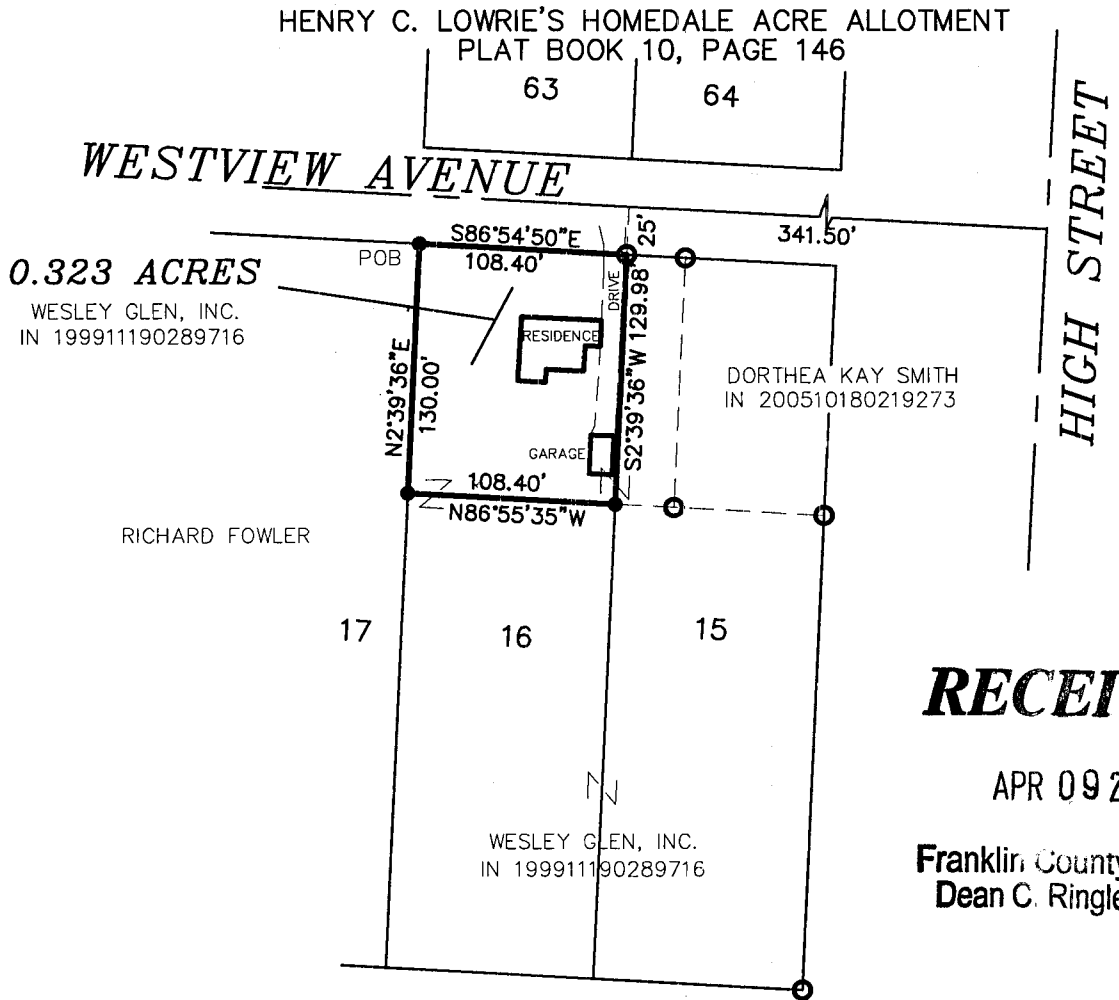


PREPARED BY:
HOCKADEN AND ASSOCIATES, INC.
Consulting Engineers & Surveyors
883 North Cassady Avenue
Columbus, Ohio 43219
Telephone: (614) 252-0993
Fax: (614) 252-0444

LOT SPLIT SURVEY

SITUATED IN THE STATE OF OHIO, COUNTY OF FRANKLIN, CITY OF COLUMBUS,
BEING A PART OF LOTS FIFTEEN (15) AND SIXTEEN (16) OF
HENRY C. LOWRIE'S HOMEDALE ACRE ALLOTMENT
AS RECORDED IN PLAT BOOK 10, PAGE 146 IN THE
FRANKLIN COUNTY RECORDER'S OFFICE.

BEARINGS ARE BASED UPON THE SOUTHERLY LINE OF WESTVIEW AVENUE
AN ASSUMED BEARING OF SOUTH 86°54'50" EAST WAS USED AND ALL
OTHER BEARINGS BASED UPON THIS MERIDIAN.



RECEIVED

APR 09 2012

Franklin County Engineer
Dean C. Ringle, P.E., P.S.

LEGEND

- EXISTING 3/4" ID PIPE
- 3/4" ID PIPE SET

GRAPHIC SCALE



(IN FEET)

1 inch = 100 ft.

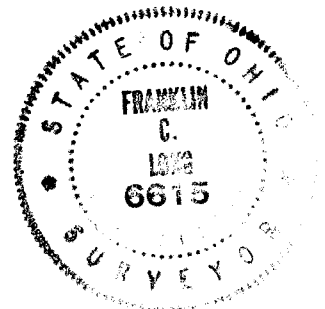
SCALE: 1"=100'

DATE: 03-21-2012

REVISED DATES

42745/10.2

SURVD	DRAWN	CHECKED
SUR. BY	FCL	CK BY



HOCKADEN AND ASSOCIATES, INC.
CONSULTING ENGINEERS & SURVEYORS

By *Frank C. Long* 9 APR 2012
FRANK C. LONG, P.S. No. 6615