



Evans, Mechwart, Hambleton & Tilton, Inc.
 Engineers • Surveyors • Planners • Scientists
 5500 New Albany Road, Columbus, OH 43054
 Phone: 614.775.4500 Toll Free: 888.775.3648
 emht.com

SURVEY OF ACREAGE PARCEL

VIRGINIA MILITARY SURVEY NO. 1473

TOWNSHIP OF PRAIRIE, COUNTY OF FRANKLIN, STATE OF OHIO

Date: April 16, 2012

Scale: 1" = 100'

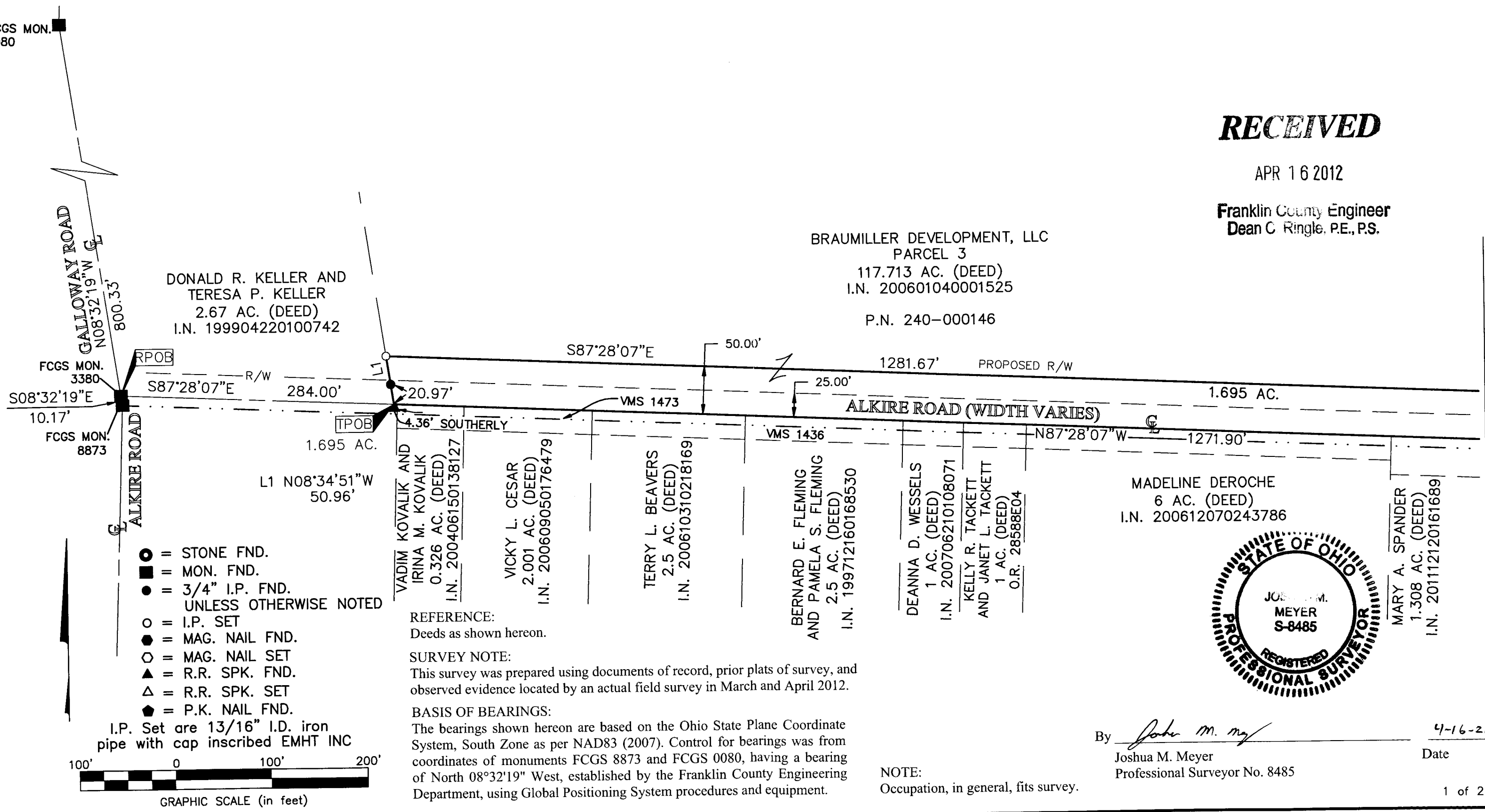
Job No: 2012-0447

RECEIVED

APR 16 2012

Franklin County Engineer
 Dean C. Ringle, P.E., P.S.

J:\20120447\20120447SV\DWG\20120447BNDY.DWG plotted by MEYER, JOSH on 4/16/2012 7:46:14 AM last saved by JMEYER on 4/16/2012 7:44:38 AM Xrefs: 7858950.DWG & 78106950.DWG



BRAUMILLER DEVELOPMENT, LLC
 PARCEL 3
 117.713 AC. (DEED)
 I.N. 200601040001525
 P.N. 240-000146

DONALD R. KELLER AND
 TERESA P. KELLER
 2.67 AC. (DEED)
 I.N. 199904220100742

VADIM KOVALIK AND
 IRINA M. KOVALIK
 0.326 AC. (DEED)
 I.N. 200406150138127

VICKY L. CESAR
 2.001 AC. (DEED)
 I.N. 200609050176479

TERRY L. BEAVERS
 2.5 AC. (DEED)
 I.N. 200610310218169

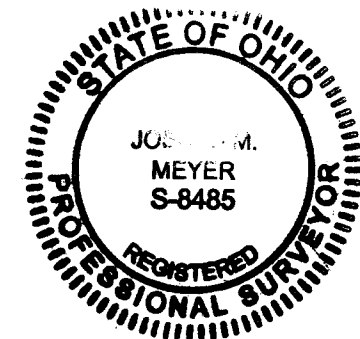
BERNARD E. FLEMING
 AND PAMELA S. FLEMING
 2.5 AC. (DEED)
 I.N. 199712160168530

DEANNA D. WESSELS
 1 AC. (DEED)
 I.N. 200706210108071

KELLY R. TACKETT
 AND JANET L. TACKETT
 1 AC. (DEED)
 O.R. 28588E04

MADELINE DEROCHE
 6 AC. (DEED)
 I.N. 200612070243786

MARY A. SPANDER
 1.308 AC. (DEED)
 I.N. 201112120161689



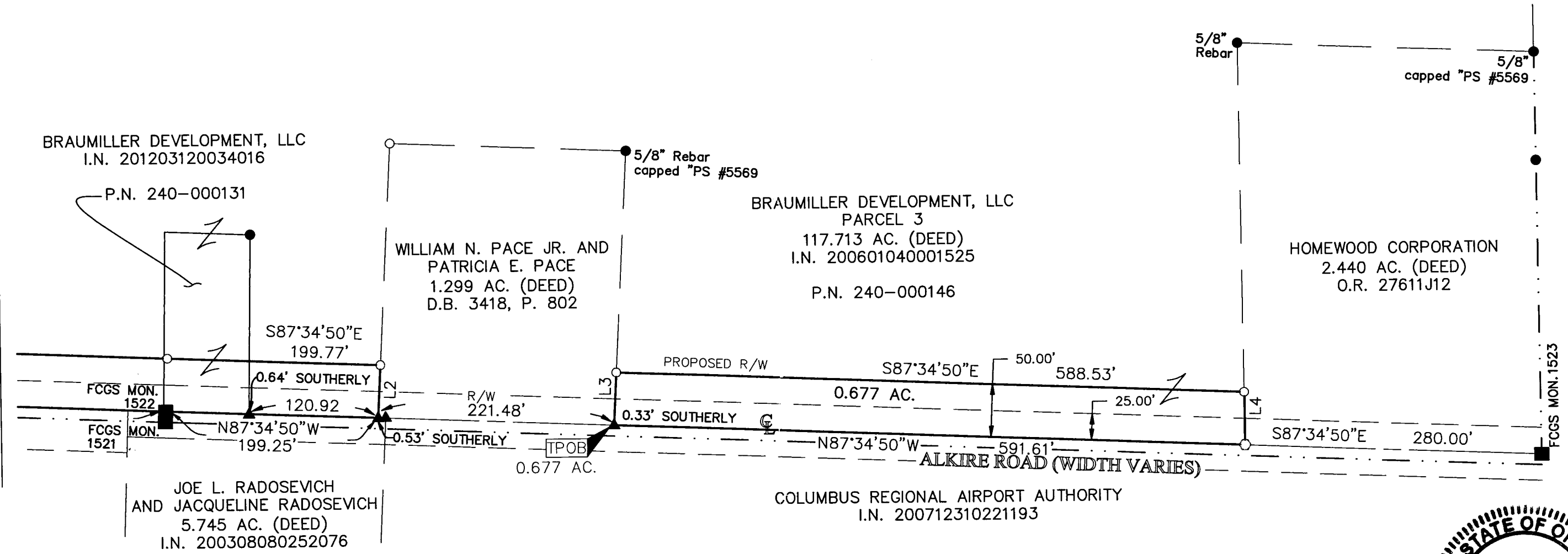
By Joshua M. Meyer Date 4-16-2012
 Joshua M. Meyer Professional Surveyor No. 8485

NOTE:
Occupation, in general, fits survey.

EMHT
 Evans, Mechwart, Hambleton & Tilton, Inc.
 Engineers • Surveyors • Planners • Scientists
 5500 New Albany Road, Columbus, OH 43054
 Phone: 614.775.4500 Toll Free: 888.775.3648
 emht.com

SURVEY OF ACREAGE PARCEL
VIRGINIA MILITARY SURVEY NO. 1473
TOWNSHIP OF PRAIRIE, COUNTY OF FRANKLIN, STATE OF OHIO

Date: April 16, 2012
 Scale: 1" = 100'
 Job No: 2012-0447



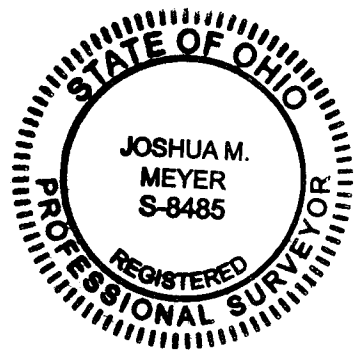
- = STONE FND.
 - = MON. FND.
 - = 3/4" I.P. FND.
 - = I.P. SET
 - = MAG. NAIL FND.
 - = MAG. NAIL SET
 - ▲ = R.R. SPK. FND.
 - △ = R.R. SPK. SET
 - ◆ = P.K. NAIL FND.
- UNLESS OTHERWISE NOTED
- I.P. Set are 13/16" I.D. iron pipe with cap inscribed EMHT INC

- L2 S03°04'15"W 50.00'
- L3 N03°04'15"E 50.00'
- L4 S00°27'39"E 50.06'

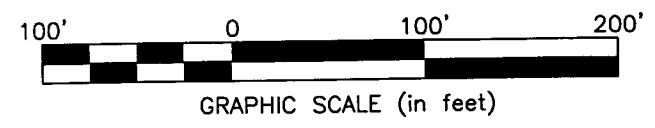
RECEIVED

APR 16 2012

Franklin County Engineer
 Dean C. Ringle, P.E., P.S.



By Joshua M. Meyer Date 4-16-2012
 Joshua M. Meyer
 Professional Surveyor No. 8485



J:\20120447\20120447SV\DWG\20120447BNDY.DWG plotted by MEYER, JOSH on 4/16/2012 7:44:38 AM
 Xrefs: 78556950.DWG & 78108950.DWG