



Evans, Mechwart, Hambleton & Tilton, Inc. Engineers • Surveyors • Planners • Scientists 5500 New Albany Road, Columbus, OH 43054 Phone: 614.775.4500 Toll Free: 888.775.3648 emht.com

SURVEY OF ACREAGE PARCEL

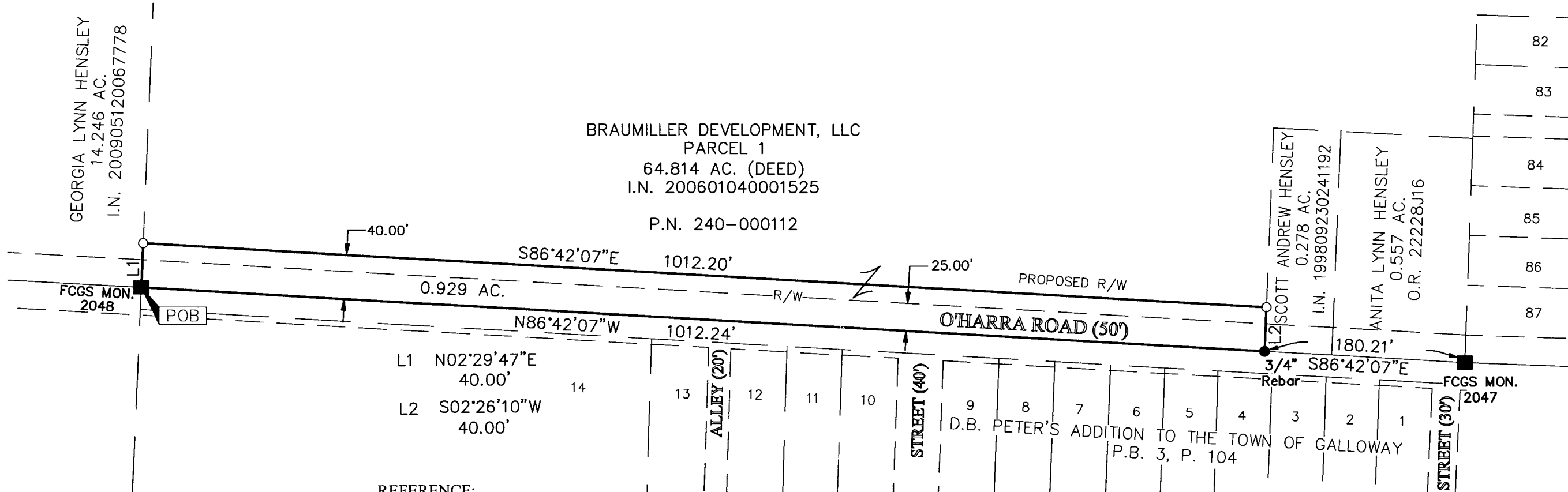
VIRGINIA MILITARY SURVEY NO. 1473

TOWNSHIP OF PRAIRIE, COUNTY OF FRANKLIN, STATE OF OHIO

Date: April 16, 2012

Scale: 1" = 100'

Job No: 2012-0447



REFERENCE:

- Deeds as shown hereon.
- Roadway Plan set titled "FRANKLIN COUNTY OHIO OFFICE OF COUNTY ENGINEER ALTON & GALLOWAY ROAD IMPROVEMENT PRAIRIE TOWNSHIP MAY 1936". The plan set title had "ALTON & GALLOWAY" crossed out and replaced with "O-HARRA".

SURVEY NOTE:

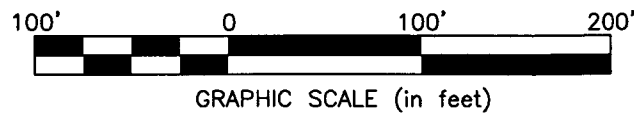
This survey was prepared using documents of record, prior plats of survey, and observed evidence located by an actual field survey in March and April 2012.

BASIS OF BEARINGS:

The bearings shown hereon are based on the Ohio State Plane Coordinate System, South Zone as per NAD83 (2007). Control for bearings was from coordinates of monuments FCGS 8873 and FCGS 0080, having a bearing of North 08°32'19" West, established by the Franklin County Engineering Department, using Global Positioning System procedures and equipment.

- = STONE FND.
- = MON. FND.
- = 3/4" I.P. FND.
- = I.P. SET
- = MAG. NAIL FND.
- = MAG. NAIL SET
- ▲ = R.R. SPK. FND.
- △ = R.R. SPK. SET
- ◆ = P.K. NAIL FND.

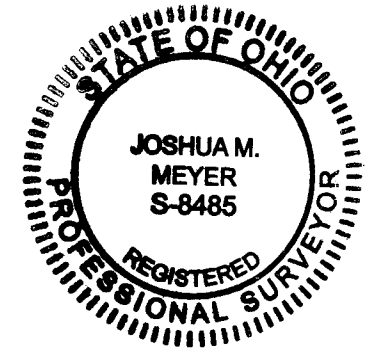
I.P. Set are 13/16" I.D. iron pipe with cap inscribed EMHT INC



RECEIVED

APR 16 2012

Franklin County Engineer
Dean C. Ringle, P.E., P.S.



By Joshua M. Meyer
Joshua M. Meyer
Professional Surveyor No. 8485

Date 4-16-2012

NOTE:
Occupation, in general, fits survey.