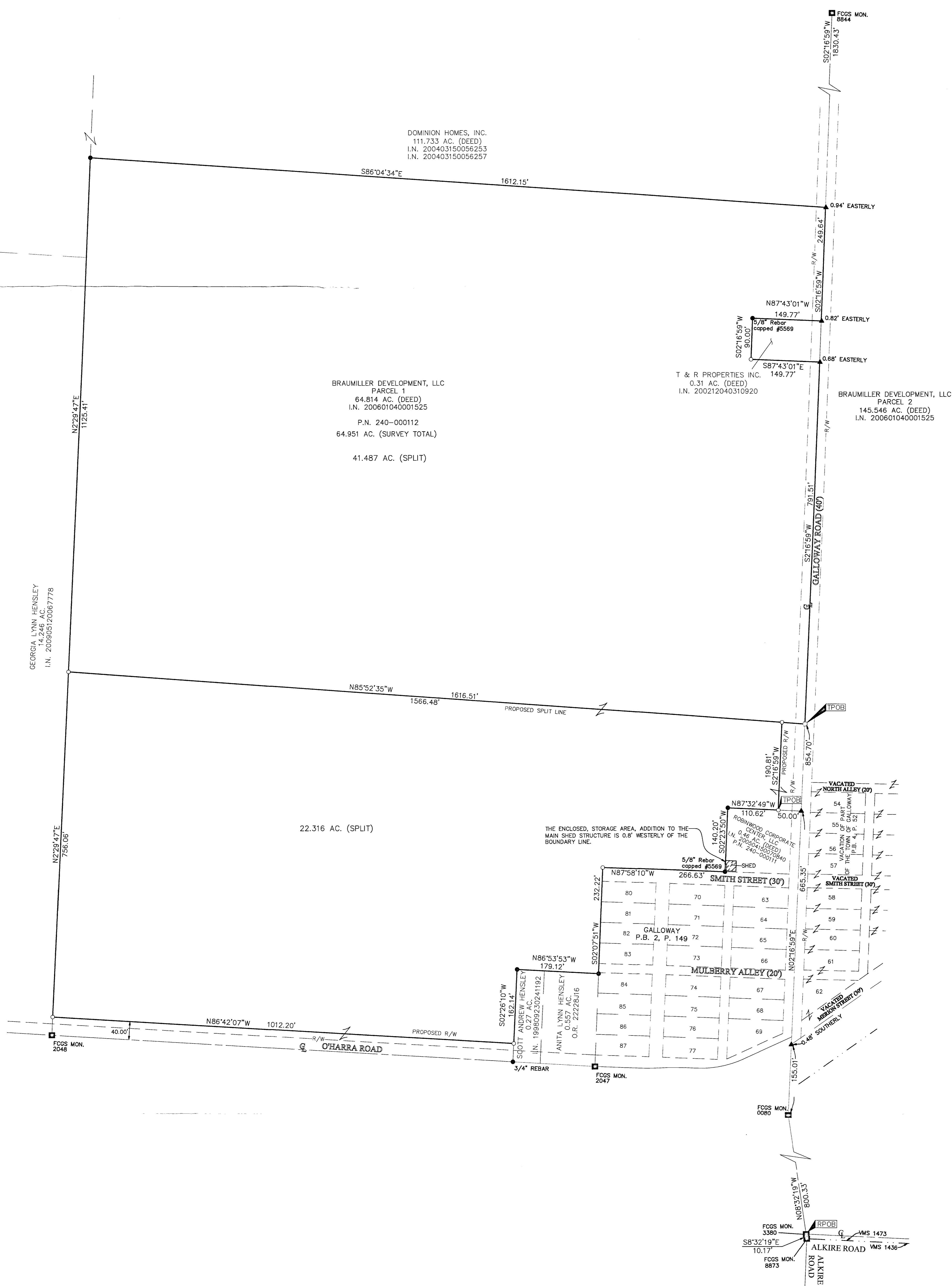


SURVEY OF ACREAGE PARCELS

VIRGINIA MILITARY SURVEY NO. 1473

TOWNSHIP OF PRAIRIE, COUNTY OF FRANKLIN, STATE OF OHIO

C-S-F



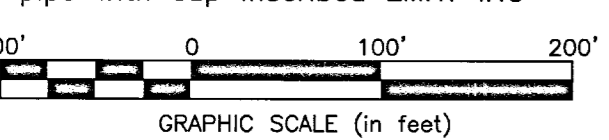
REFERENCE:
 - Deeds and Plats as shown hereon.
 - Roadway Plan set titled "FRANKLIN COUNTY OHIO OFFICE OF COUNTY ENGINEER ALTON & GALLOWAY ROAD IMPROVEMENT PRAIRIE TOWNSHIP MAY 1936". The plan set title had "ALTON & GALLOWAY" crossed out and replaced with "O-HARRA".

NOTE:
 Occupation, in general, fits survey, except as shown hereon.

SURVEY NOTE:
 This survey was prepared using documents of record, prior plats of survey, and observed evidence located by an actual field survey in March and April 2012.

BASIS OF BEARINGS:
 The bearings shown hereon are based on the Ohio State P line Coordinate System, South Zone as per NAD83 (2007). Control for bearings was from coordinates of monuments FCGS 8873 and FCGS 0080, having a bearing of North 08°32'19" West, established by the Franklin County Engineering Department, using Global Positioning System procedures and equipment.

- = STONE FND.
- = MON. FND.
- = 3/4" I.P. FND.
- = I.P. SET
- = MAG. NAIL FND.
- = MAG. NAIL SET
- ▲ = R.R. SPK. FND.
- ▲ = R.R. SPK. SET
- = P.K. NAIL FND.
- = P.K. NAIL SET
- I.P. Set are 13/16" I.D. iron pipe with cap inscribed EMHT INC



By Joshua M. Meyer 4-24-2012
 Professional Surveyor No. 8485 Date

RECEIVED
 APR 26 2012
 Franklin County Engineer
 Duane C. Riggs, PE, PS

EMHT		Date: April 16, 2012
Evans, Mechwart, Hamblen & Titon, Inc. Engineers • Surveyors • Planners • Scientists 350 New Albany Road, Columbus, OH 43254 Phone: 614.775.4500 Toll Free: 888.775.3648		Scale: 1" = 100'
emht.com		Job No: 2012-0447
		Sheet: 1 of 1
REVISIONS		
MARK	DATE	DESCRIPTION
JMM	4/24	Revised the proposed split line