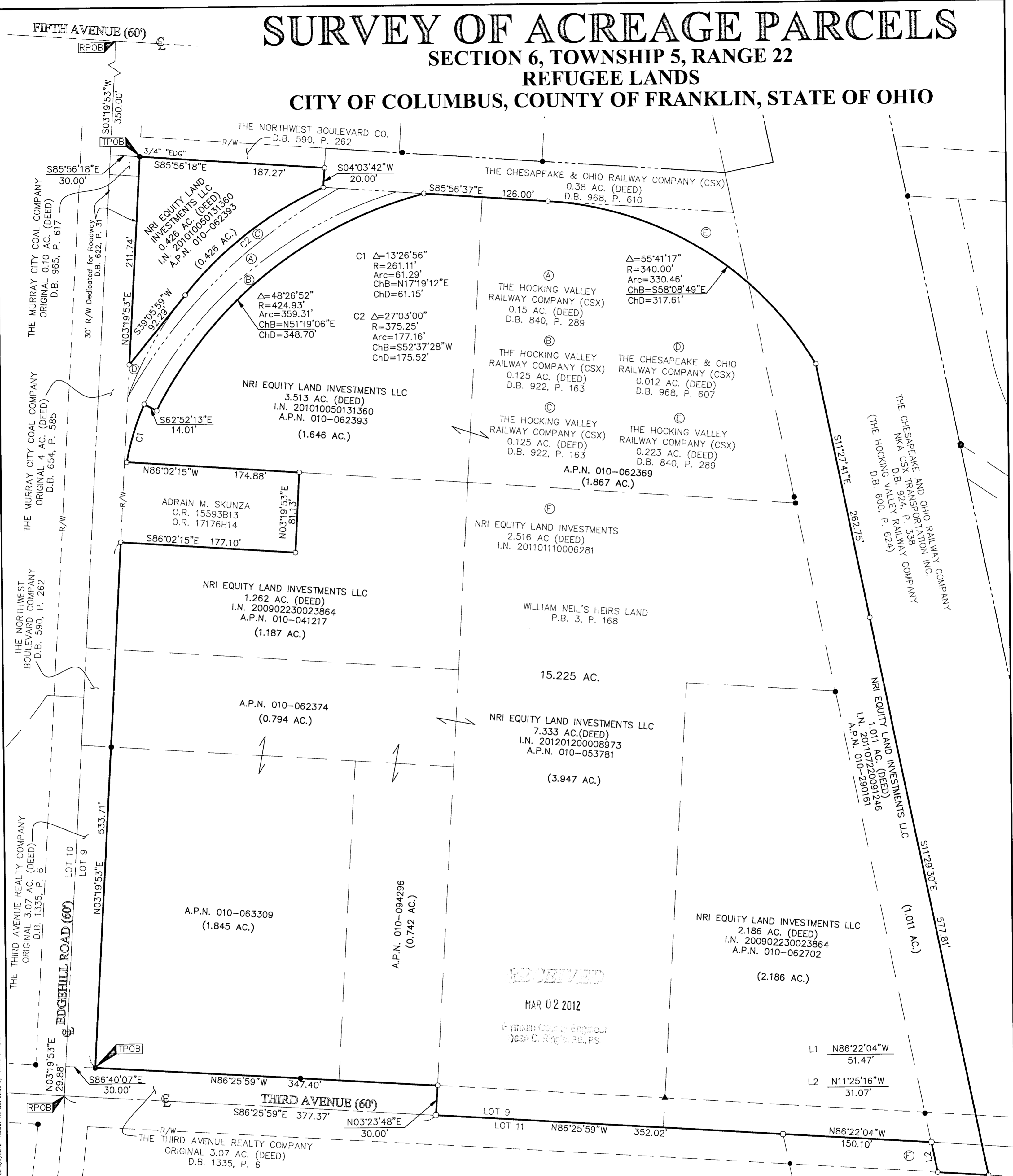


SURVEY OF ACREAGE PARCELS

SECTION 6, TOWNSHIP 5, RANGE 22

REFUGEE LANDS

CITY OF COLUMBUS, COUNTY OF FRANKLIN, STATE OF OHIO

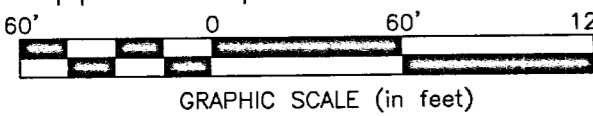


SURVEY NOTE:
This survey was prepared using documents of record, prior plats of survey, and observed evidence located by an actual field survey.

BASIS OF BEARINGS:
Bearings are based on the Ohio State Plane Coordinate system as per NAD83, (1986 adjustment). Control for bearings was from coordinates of monuments 5-83 & 4-83, having a bearing of North 00°22'10" West, for the west limited access right-of-way line of said Olentangy River Road, established by the Franklin County Engineering Department, using Global Positioning System procedures and equipment.

NOTE:
The Chesapeake and Ohio Railway Company by deed of record in Deed Book 924, Page 338, now known as CSX Transportation Inc., successor by merger of record in Official Record 13276A14 and Official Record 13283G13 (as of record in Deed Book 840, Page 289, Deed Book 922, Page 163, Deed Book 600, Page 624 and The Chesapeake & Ohio Railway Company by deed of record in Deed Book 968, Page 607 and Deed Book 968, Page 610)

- = STONE FND.
 - = MON. FND.
 - = I.P. FND.
 - = I.P. SET
 - = MAG. NAIL FND.
 - = MAG. NAIL SET
 - ▲ = R.R. SPK. FND.
 - △ = R.R. SPK. SET
 - ◆ = P.K. NAIL FND.
- I.P. Set are 13/16" I.D. iron pipe with cap inscribed EMHT INC



By Edward J. Miller
Professional Surveyor No. 8250 Date

EMHT Evans, Mechwart, Hambleton & Tilton, Inc. Engineers • Surveyors • Planners • Scientists 5500 New Albany Road, Columbus, OH 43054 Phone: 614.775.4500 Toll Free: 888.775.3648 emht.com		Date: February 1, 2012, 2012
		Scale: 1" = 60'
		Job No: 2011-0746
		Sheet: 1 of 1
REVISIONS		
MARK	DATE	DESCRIPTION
HLK	3/2/12	Revision per county comments