



Evans, Mechwart, Hambleton & Tilton, Inc.
 Engineers • Surveyors • Planners • Scientists
 5500 New Albany Road, Columbus, OH 43054
 Phone: 614.775.4500 Toll Free: 888.775.3648
 emht.com

SURVEY OF ACREAGE PARCEL

SURVEY NUMBER 1462

VIRGINIA MILITARY DISTRICT

CITY OF COLUMBUS, COUNTY OF FRANKLIN, STATE OF OHIO

Date: March 23, 2012

Scale: 1" = 200'

Job No. 2012-0468

BASIS OF BEARINGS:

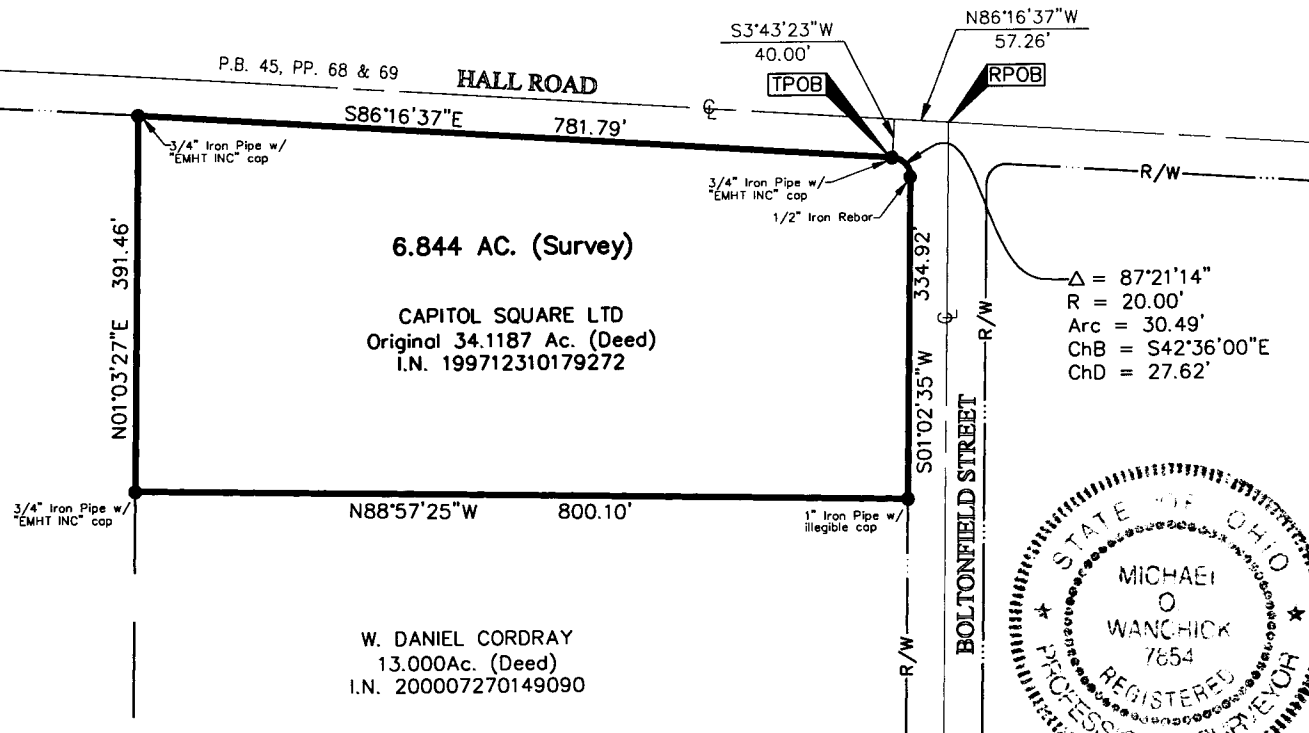
The bearings shown hereon are based on the same meridian as the plat entitled "DEDICATION OF GEORGESVILLE ROAD, HALL ROAD & BOLTONFIELD STREET" of record in Plat Book 45, Pages 68 and 69. The portion of the centerline of Boltonfield Street, having a bearing of South 01° 02' 35" West, is designated the "basis of bearing" for this survey.

SURVEY NOTE:

This survey was prepared using documents of record, prior plats of survey, and observed evidence located by an actual field survey.

Occupation, in general, fits survey.

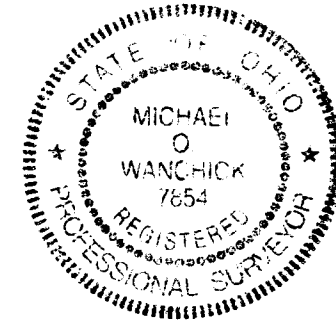
DISPATCH PRINTING COMPANY
TRACT TWO
Original 106.377 Ac. (Deed)
O.R. 09604D03



- = STONE FND.
- = MON. FND.
- = I.P. FND.
- = I.P. SET
- = MAG. NAIL FND.
- = MAG. NAIL SET
- ▲ = R.R. SPK. FND.
- △ = R.R. SPK. SET
- ◆ = P.K. NAIL FND.

I.P. Set are 13/16" I.D. iron pipe with cap inscribed EMHT INC

GRAPHIC SCALE (in feet)



RECEIVED

MAR 26 2012

By Michael O. Wanchick 3/26/12
 Michael O. Wanchick Date
 Professional Surveyor No. 7854

C-10-B

Franklin County Engineer
 Dean C. Ringle, P.E., P.S.

J:\310120468\20120468V.DWG 20120468-BNDY-02.DWG plotted by GEGGER, STEVEN on 3/23/2012 2:18:44 PM
 xref: J:\310120468\20120468V.DWG 20120468-BNDY-02.DWG plotted by GEGGER, STEVEN on 3/23/2012 2:18:49 PM last saved by SGEGER on 3/23/2012 2:18:44 PM