



Evans, Mechwart, Hambleton & Tilton, Inc.
Engineers • Surveyors • Planners • Scientists
5500 New Albany Road, Columbus, OH 43054
Phone: 614.775.4500 Toll Free: 888.775.3648
emht.com

SURVEY OF ACREAGE PARCEL

SECTION 6, TOWNSHIP 5, RANGE 22

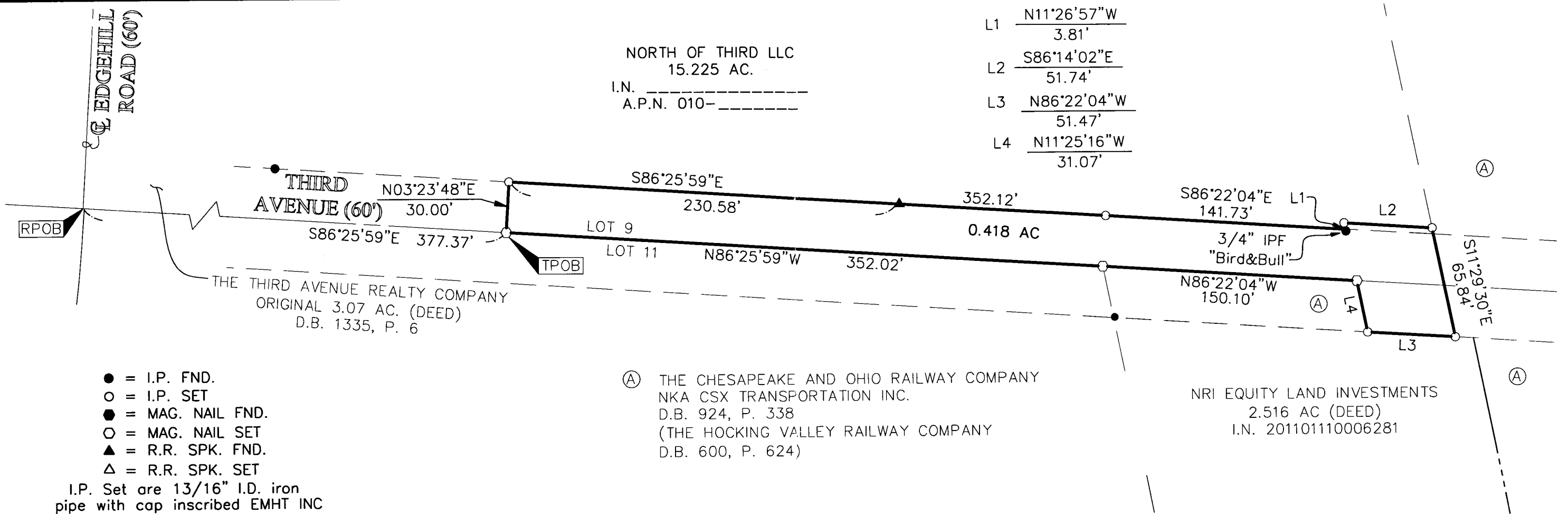
REFUGEE LANDS

CITY OF COLUMBUS, COUNTY OF FRANKLIN, STATE OF OHIO

Date: March 8, 2012

Scale: 1" = 60

Job No: 20110746



- = I.P. FND.
- = I.P. SET
- = MAG. NAIL FND.
- = MAG. NAIL SET
- ▲ = R.R. SPK. FND.
- △ = R.R. SPK. SET

I.P. Set are 13/16" I.D. iron pipe with cap inscribed EMHT INC

SURVEY NOTE:

This survey was prepared using documents of record, prior plats of survey, and observed evidence located by an actual field survey.

BASIS OF BEARINGS:

Bearings are based on the Ohio State Plane Coordinate system as per NAD83, (1986 adjustment). Control for bearings was from coordinates of monuments 5-83 & 4-83, having a bearing of North 00°22'10" West, for the west limited access right-of-way line of said Olentangy River Road, established by the Franklin County Engineering Department, using Global Positioning System procedures and equipment.

NOTE:

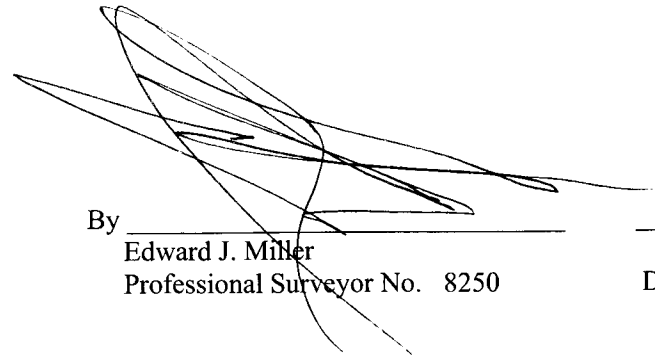
The Chesapeake and Ohio Railway Company by deed of record in Deed Book 924, Page 338, now known as CSX Transportation Inc., successor by merger of record in Official Record 13276A14 and Official Record 13283G13 (as original conveyed to The Hocking Valley Railway Company by deed of record in Deed Book 840, Page 289, Deed Book 922, Page 163, Deed Book 600, Page 624 and The Chesapeake & Ohio Railway Company by deed of record in Deed Book 968, Page 607 and Deed Book 968, Page 610)

RECEIVED

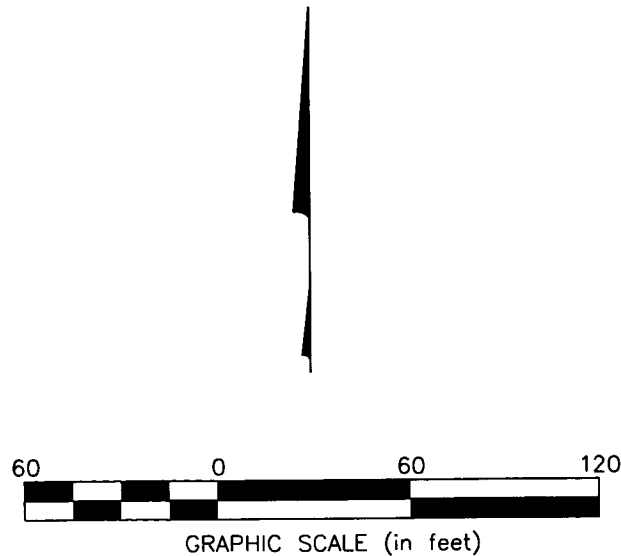
MAR 12 2012

Franklin County Engineer
Dean C. Ringle, P.E., P.S.



By 
Edward J. Miller
Professional Surveyor No. 8250

Date 3/12/12



J:\20110746\20110746SV\DWG\20110746BNDY_03.DWG plotted by KING, HEATHER on 3/9/2012 10:52:36 AM last saved by KING on 3/9/2012 10:51:33 AM