

G-2-C  
F-8-F



Evans, Mechwart, Hambleton & Tilton, Inc.  
Engineers • Surveyors • Planners • Scientists  
5500 New Albany Road, Columbus, OH 43054  
Phone: 614.775.4500 Toll Free: 888.775.3648  
emht.com

# SURVEY OF ACREAGE PARCEL

HALF SECTIO 10, SECTION 8, TOWNSHIP 5, RANGE 22  
REFUGEE LANDS  
CITY OF COLUMBUS, COUNTY OF FRANKLIN, STATE OF OHIO

Date: February 20, 2012

Scale: 1" = 50'

Job No: 20111455

## RECEIVED

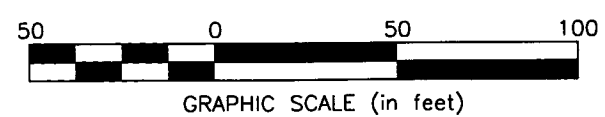
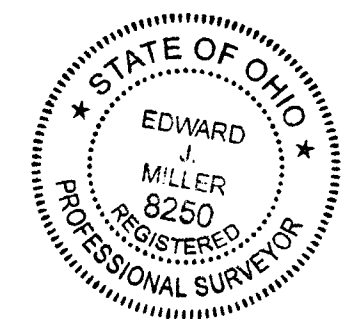
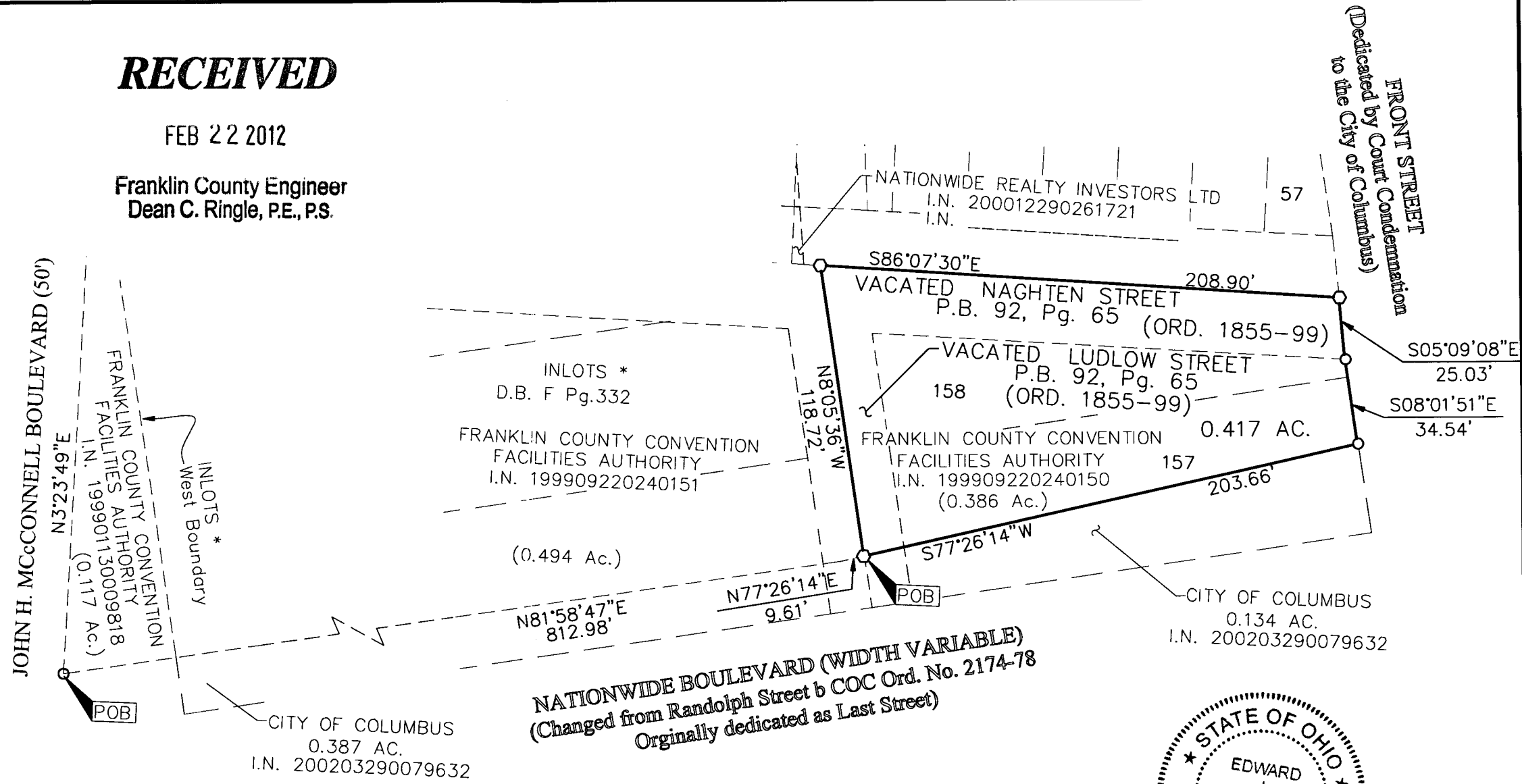
FEB 22 2012

Franklin County Engineer  
Dean C. Ringle, P.E., P.S.

### BASIS OF BEARINGS:

The Bearings shown hereon are based on the same meridian as the bearings shown on the subdivision plat entitled "Huntington Park" of record in Plat Book 112, Pages 24 and 25, Recorder's Office, Franklin County Ohio. On said plat of record the centerline of Huntington Park Lane has a bearing of North 03°05'07" East.

SOURCE OF DATA: The source of recorded survey data references in the plan and text of this plat are the records of the Recorder's Office, Franklin County, Ohio.



○ = I.P. SET  
○ = MAG. NAIL SET  
I.P. Set are 13/16" I.D. iron pipe with cap inscribed EMHT INC

\* Plat of Columbus of record in Deed Book F, Page 332 destroyed by fire, replatted in Plat Book 3, Page 247 and also represented in Plat Book 14, Page 27, Recorder's Office Franklin County, Ohio

By [Signature] Professional Surveyor No. 8250  
Date 2/22/12

J:\20111455\20111455BNDY-04.DWG plotted by MASTON, JOHN on 2/21/2012 4:28:13 PM last saved by JMASTON on 2/21/2012 11:08:17 AM