



SURVEY OF 2.562 ACRES FOR PROPOSED 60' RIGHT-OF-WAY

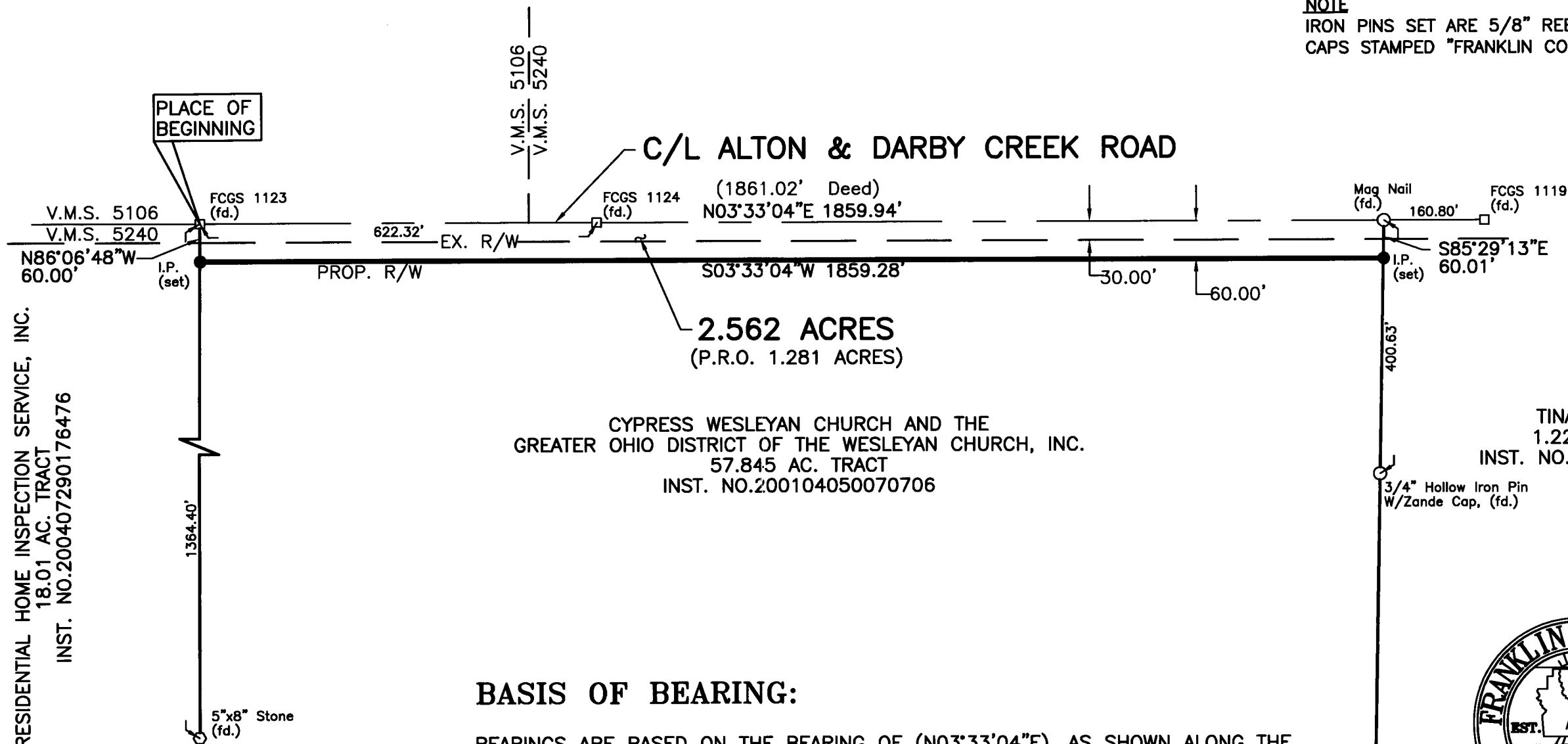
SITUATE IN THE STATE OF OHIO, COUNTY OF FRANKLIN, TOWNSHIP OF PRAIRIE,
BEING A PART OF VIRGINIA MILITARY SURVEY NUMBER 5240



GRID NORTH



NOTE
IRON PINS SET ARE 5/8" REBAR WITH PLASTIC CAPS STAMPED "FRANKLIN COUNTY ENGINEER".



RESIDENTIAL HOME INSPECTION SERVICE, INC.
18.01 AC. TRACT
INST. NO.200407290176476

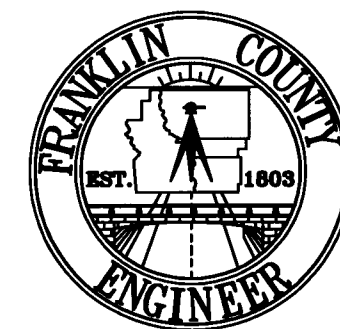
CYPRESS WESLEYAN CHURCH AND THE
GREATER OHIO DISTRICT OF THE WESLEYAN CHURCH, INC.
57.845 AC. TRACT
INST. NO.200104050070706

TINA M. THOMAS
1.223 AC. TRACT
INST. NO.201106020069555

BASIS OF BEARING:

BEARINGS ARE BASED ON THE BEARING OF (N03°33'04"E), AS SHOWN ALONG THE CENTERLINE OF ALTON & DARBY CREEK ROAD FROM A CENTERLINE SURVEY PLAT OF ALTON & DARBY CREEK ROAD, DATED 01/26/2010, ON FILE IN THE FRANKLIN COUNTY ENGINEER'S OFFICE.

THIS PLAT WAS PREPARED FROM AN ACTUAL FIELD SURVEY OF THE PREMISES PERFORMED BY THE FRANKLIN COUNTY ENGINEER'S SURVEY DEPARTMENT IN AUGUST, 2011, ALONG WITH PUBLIC RECORDS ON FILE IN THE FRANKLIN COUNTY RECORDER'S OFFICE AND THE FRANKLIN COUNTY ENGINEER'S OFFICE.



RECEIVED

JAN 10 2012

Franklin County Engineer
Dean C. Ringler, P.E., P.S.



David L. Pearson
DAVID L. PEARSON
OHIO REGISTERED SURVEYOR NO. 7298

01/10/2012
DATE

DATE: 01-09-12		DRAWING: Cypress RW	
		DRAWN BY: DKT	
REVISIONS			
DATE	DESCRIPTION	BY	