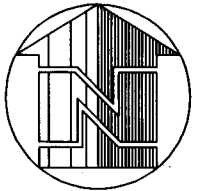


# SURVEY OF 0.047 ACRES

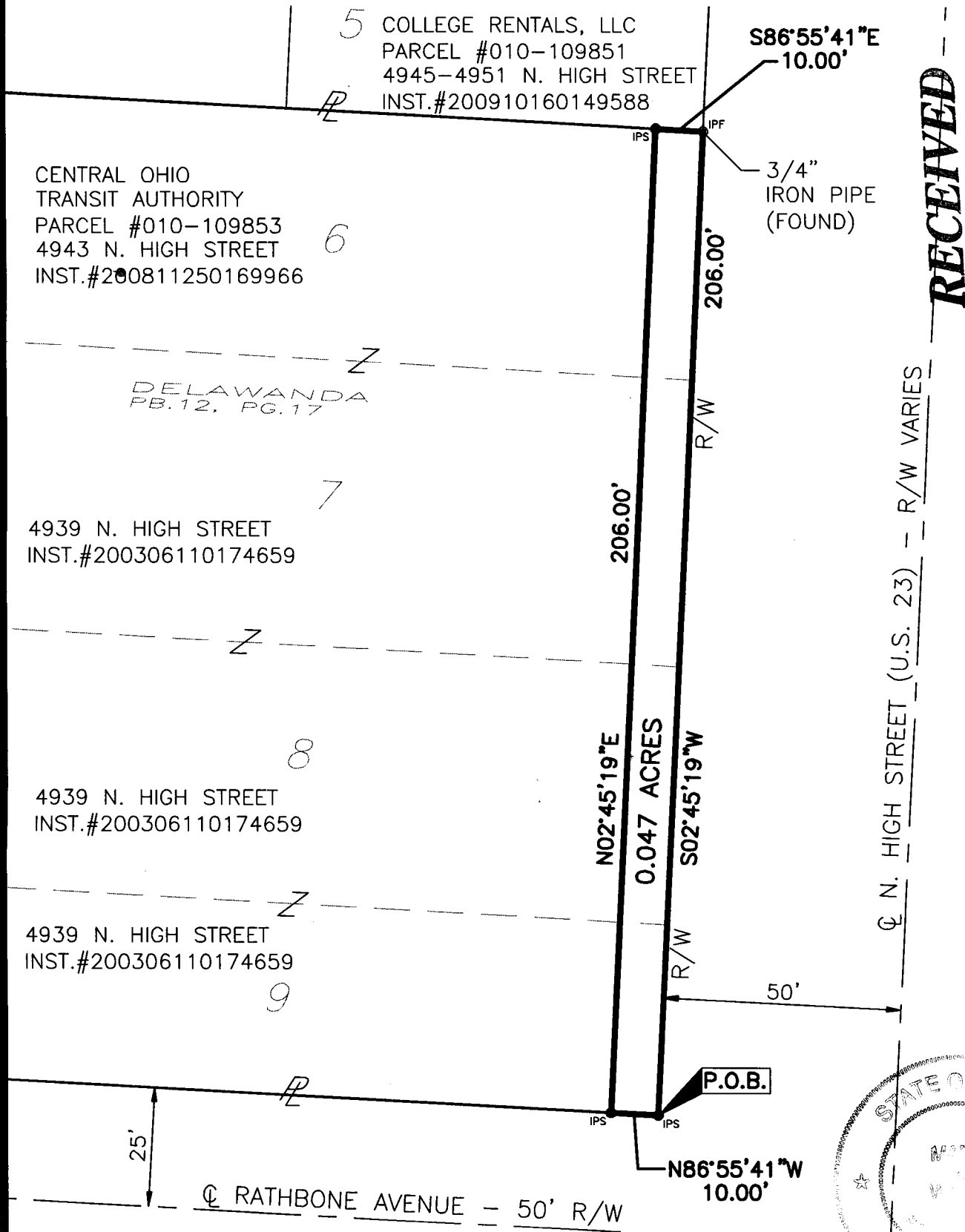
Situated in the State of Ohio, County of Franklin, City of Columbus,  
being a part of Lots 6, 7, 8, and 9 of Delawanda



1" = 30'

### Monument Legend:

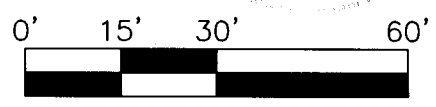
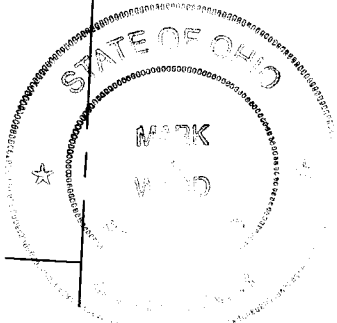
- IPF IRON PIN FOUND
- IPS 5/8" REBAR, 30" LONG W/YELLOW PLASTIC CAP INSCRIBED "RII"



RECEIVED

FEB 06 2012

Franklin County Engineer  
Dean C. Ringle, P.E., P.S.



SCALE IN FEET



RESOURCE INTERNATIONAL INC.  
6350 PRESIDENTIAL GATEWAY  
COLUMBUS, OHIO 43231  
(614) 823-4949

I hereby state that the above map was prepared from record information and field measurements conducted by Resource International, Inc. in June of 2011.

*Mark S. Ward*  
Mark S. Ward P.S. S-7514 DATE 2-6-12

**Basis of Bearings:**  
The bearings shown on this plat are based on the Ohio State Plane Coordinate System, South Zone, NAD83 (CORS). Said bearings originated from a field traverse which was tied (referenced) to said coordinate system by GPS observations and observations of selected stations in the Ohio Department of Transportation Virtual Reference Station network. The portion of the westerly right of way line of High Street, having a bearing of South 02° 45' 19" West and monumented as shown hereon, is designated the "basis of bearing" for this survey.