

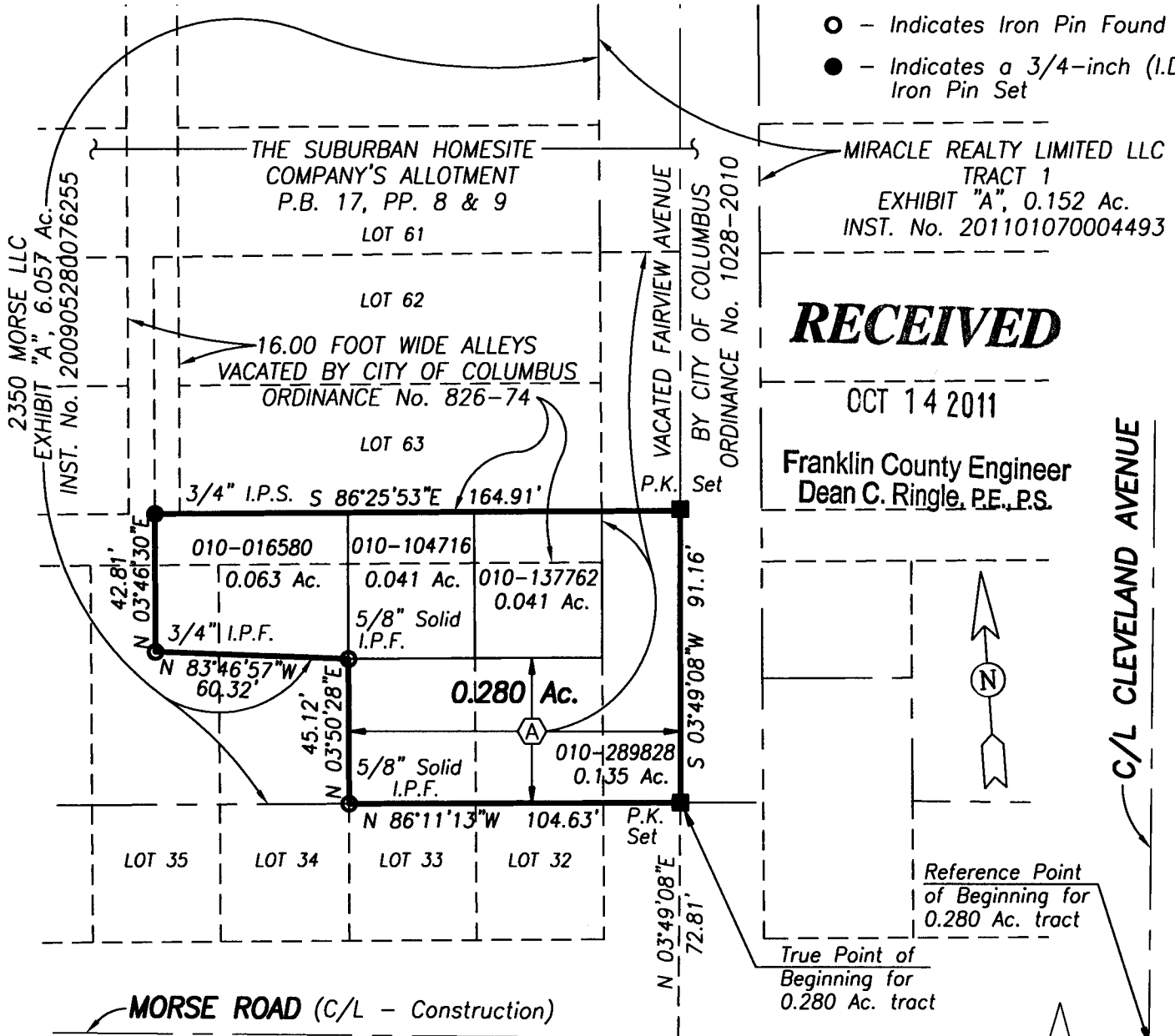
BAUER, DAVIDSON & MERCHANT, INC.

CONSULTING ENGINEERS

255 GREEN MEADOWS DRIVE SOUTH LEWIS CENTER, OHIO 43035
PHONE: 614-846-3393 FAX: 614-846-4575

BOUNDARY SURVEY MAP OF A 0.280 ACRE AREA OF LAND LOCATED NORTH OF MORSE ROAD AND ON THE WESTERLY SIDE OF FAIRVIEW AVENUE (UNIMPROVED) IN THE CITY OF COLUMBUS, COUNTY OF FRANKLIN, STATE OF OHIO

- - Indicates P.K. Nail Set
- - Indicates Iron Pin Found
- - Indicates a 3/4-inch (I.D.) Iron Pin Set

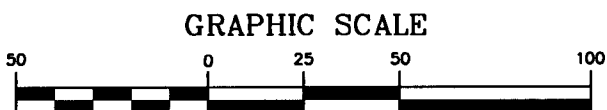


Ⓐ CHARLES M. SAVKO
EXHIBIT "A" 0.181 Ac.
INST. No. 201101140007936

Situated in the State of Ohio, County of Franklin, City of Columbus, and being part of The Suburban Homesite Company's Allotment, the subdivision plat of same being shown of record in Plat Book 17, Pages 8 and 9 and containing a 0.280 acre area of land, more or less, part of said 0.280 acre area being part of Lots numbered 32, 33, 34 and 35 of said plat and designated as Parcels #1, #2 and #4 in the Transfer of Death Deed to Charles M. Savko, of record in Instrument No. 200809090136233, part of said 0.280 acre area being a part of that 0.181 acre tract of land described in the deed to Charles M. Savko, of record in Instrument No. 201101140007936, all being of record in the Recorder's Office, Franklin County, Ohio, part of said 0.280 acre being part of the vacation of part of a 16.00 foot wide alley by City of Columbus Ordinance No. 826-74 and part of vacated Fairview Avenue by City of Columbus Ordinance No. 1028-2010.

We hereby state that this map was prepared from information obtained from actual field surveys conducted by Bauer, Davidson & Merchant, Inc. in November of 2010 and in September of 2011.

The bearings shown on this map are based upon the bearing of N 85°06'44"W for the centerline construction of Morse Road as shown on FRA-MORSE Road Improvements - Phase 1 Plans - 2007.



(IN FEET)
1 inch = 50 ft.

Revised: October 14, 2011
October 10, 2011

BAUER, DAVIDSON & MERCHANT, INC.
CONSULTING ENGINEERS

BY *Jimmie L. Davis*
Jimmie L. Davis
Professional Surveyor No. 6991

