

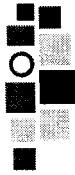
A-S-D,E

PROJ. NO: CO20080254

FILE NO: 46

DRAWN BY: BPB

CHKD BY: BPB



AMERICAN STRUCTUREPOINT INC.

2550 CORPORATE EXCHANGE DR, STE 300 COLUMBUS, OH 43231 TEL 614.901.2235 FAX 614.901.2236 www.structurepoint.com

EXHIBIT "B" PARCEL 9-E-1

0.166 ACRES PERPETUAL SIDEWALK EASEMENT

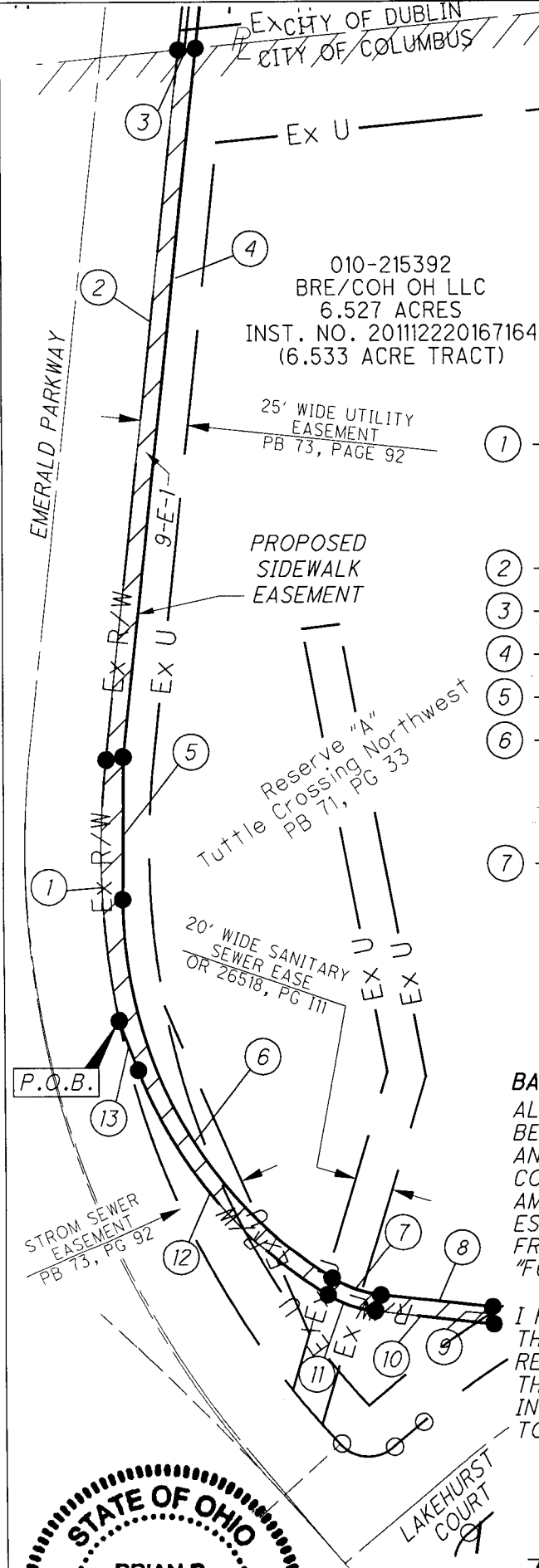
COLUMBUS, OHIO

RECEIVED

JAN 13 2012

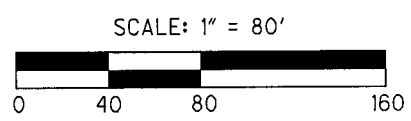
Franklin County Engineer Dean C. Ringle, P.E., P.S.

Commencing for reference from FCGS 2011, thence to the P.O.B. by the following:
N 80° 27' 53" E, 0.21'
N 9° 36' 06" W, 99.97'
N 24° 54' 34" W, 739.21'
N 39° 57' 09" W, 77.26'
N 25° 43' 58" W, 243.47'
N 78° 29' 15" E, 39.27'



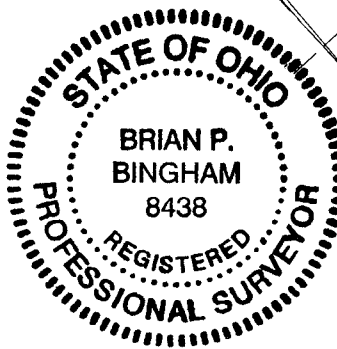
- ① - CH. = N 02° 33' 53" W
CH L. = 137.11'
R = 455.59'
ARC L. = 137.63'
Δ = 17° 18' 32"
- ② - N 06° 05' 23" E, 373.92'
- ③ - N 84° 28' 11" E, 9.19'
- ④ - S 06° 05' 23" W, 373.33'
- ⑤ - S 00° 22' 56" W, 75.02'
- ⑥ - CH. = S 28° 34' 40" E
CH L. = 226.60'
R = 234.00'
ARC L. = 236.55'
Δ = 57° 55' 11"
- ⑦ - CH. = S 70° 31' 54" E
CH L. = 26.98'
R = 60.00'
ARC L. = 27.21'
Δ = 25° 59' 16"
- ⑧ - S 83° 31' 31" E, 58.95'
- ⑨ - S 03° 44' 24" E, 9.14'
- ⑩ - N 83° 31' 31" W, 62.62'
- ⑪ - CH. = S 70° 51' 38" E
CH L. = 26.31'
R = 60.00'
ARC L. = 26.53'
Δ = 25° 19' 47"
- ⑫ - CH. = N 39° 37' 43" W
CH L. = 154.75'
R = 243.00'
ARC L. = 157.49'
Δ = 37° 08' 02"
- ⑬ - N 21° 03' 42" W, 27.27'

● = IRON PIN SET
○ = IRON PIN FOUND
I.P. SET ARE 5/8" I.D.
IRON PIN 30" LONG WITH
CAP INSCRIBED "ASI PS-8438"



BASIS OF BEARING:
ALL BEARINGS SHOWN ARE FOR PROJECT USE ONLY. BEARINGS SHOWN HEREIN ARE BASED ON GRID NORTH AND ARE REFERENCED TO THE OHIO STATE PLANE COORDINATE SYSTEM, SOUTH ZONE AND THE NORTH AMERICAN DATUM OF 1983 (1986 ADJUSTMENT), AS ESTABLISHED UTILIZING A GPS SURVEY BETWEEN FRANKLIN COUNTY MONUMENTS "FCGS 2213" AND "FCGS 4412 RESET".

I HEREBY CERTIFY THAT:
THIS DRAWING REPRESENTS THE RESULTS OF AN ACTUAL FIELD SURVEY OF THE PREMISES PERFORMED BY DYNOTEC, INC. IN DECEMBER 2008. THIS DRAWING IS CORRECT TO THE BEST OF MY KNOWLEDGE AND BELIEF.



B.P.B.
BRIAN P. BINGHAM, P.S. NO. 8438
AMERICAN STRUCTUREPOINT, INC. DATE 1/13/2012

SITUATED IN THE STATE OF OHIO, COUNTY OF FRANKLIN, CITY OF COLUMBUS, VIRGINIA MILITARY SURVEY NUMBER 3011, AND BEING A PART OF RESERVE "A", TUTTLE CROSSING NORTHWEST, OF RECORD IN PB 71, PG 33.