



Evans, Mechwart, Hambleton & Tilton, Inc.
 Engineers • Surveyors • Planners • Scientists
 5500 New Albany Road, Columbus, OH 43054
 Phone: 614.775.4500 Toll Free: 888.775.3648

emht.com

LEASE PARCEL

PART OF SURVEY #7065
 VIRGINIA MILITARY SURVEY
 CITY OF COLUMBUS, COUNTY OF FRANKLIN, STATE OF OHIO

Date: January 23, 2012

Scale: 1" = 100'

Job No. 2011-1676

Darden Restaurants, INC. / Lease Description / 2011-1676 / 20111676BV

BASIS OF BEARINGS:

The bearings described herein are based on the Ohio State Plane Coordinate System, South Zone, NAD83 (NSRS 2007). Said bearings originated from a field survey which was tied (referenced) to said coordinate system by GPS observations and observations of selected Franklin County Engineering monuments 4434 and 5407. The northerly right of way line of Renner Road, having a bearing of N78°06'31"E is designated the "basis of bearing" for this survey.

NOTES:

Occupation, in general, fits survey.

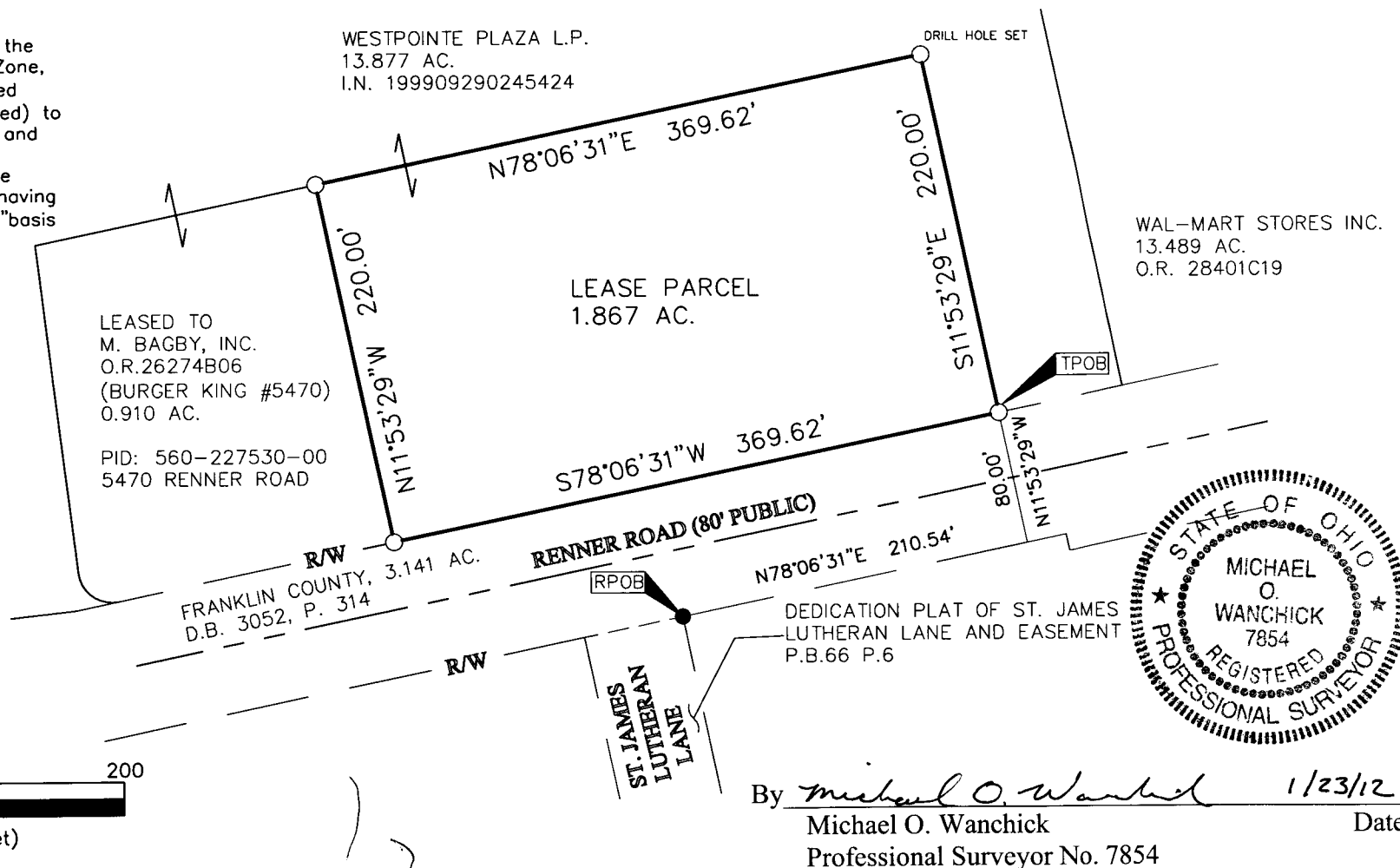
References as shown.

- = STONE FND.
- = MON. FND.
- = I.P. FND.
- = I.P. SET
- = MAG. NAIL FND.
- = MAG. NAIL SET
- ▲ = R.R. SPK. FND.
- △ = R.R. SPK. SET
- = P.K. NAIL FND.

I.P. Set are 1 3/16" I.D. iron pipe with cap inscribed EMHT INC



GRAPHIC SCALE (in feet)



By Michael O. Wanchick 1/23/12
 Michael O. Wanchick Date
 Professional Surveyor No. 7854

RECEIVED

FEB 02 2012

Franklin County Engineer
 Dean C Ringle, P.E., P.S.