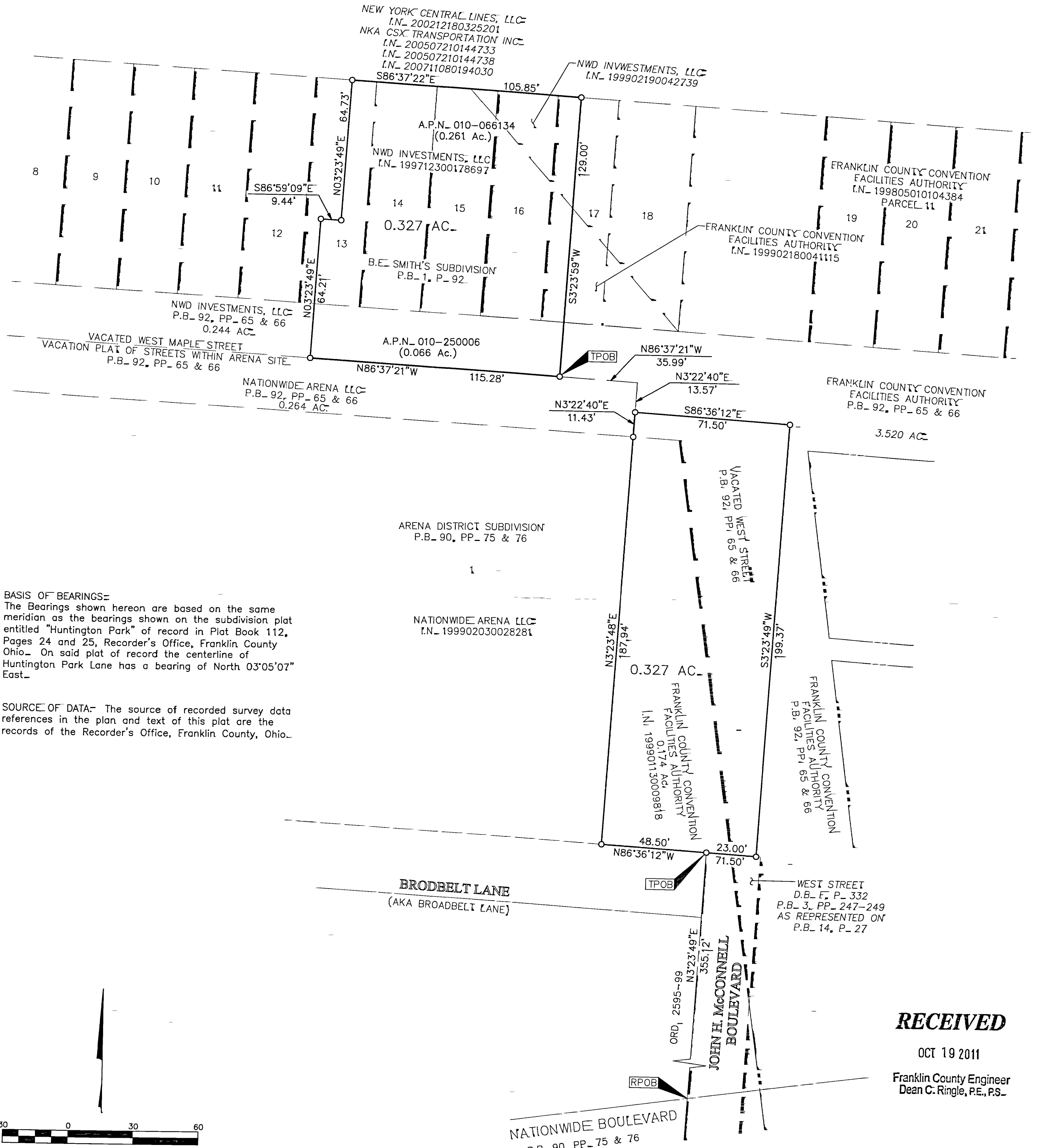


ACREAGE OF SURVEY PARCELS

HALF SECTION 10 (SECTION 8), TOWNSHIP 5, RANGE 22

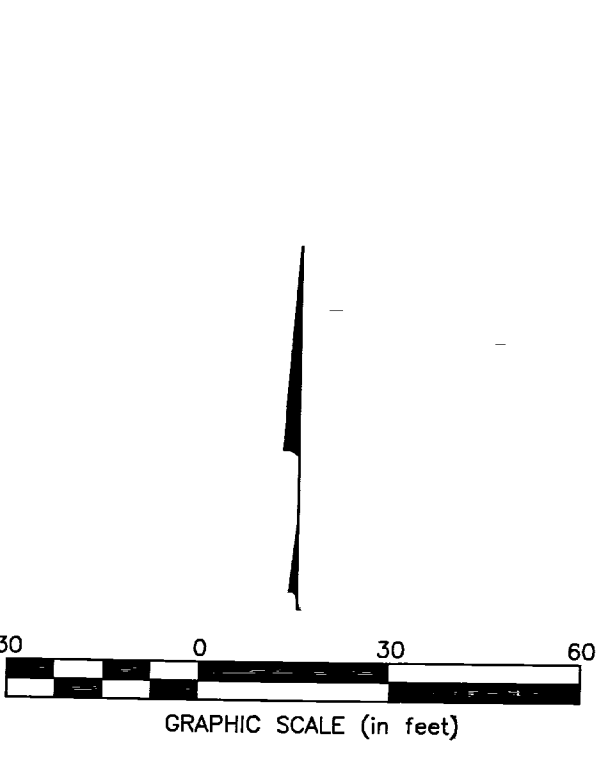
REFUGEE LANDS

CITY OF COLUMBUS, COUNTY OF FRANKLIN, STATE OF OHIO



BASIS OF BEARINGS-
 The Bearings shown hereon are based on the same meridian as the bearings shown on the subdivision plat entitled "Huntington Park" of record in Plat Book 112, Pages 24 and 25, Recorder's Office, Franklin County Ohio. On said plat of record the centerline of Huntington Park Lane has a bearing of North 03°05'07" East.

SOURCE OF DATA- The source of recorded survey data references in the plan and text of this plat are the records of the Recorder's Office, Franklin County, Ohio.



- = STONE FND.
 - = MON. FND.
 - = I.P. FND.
 - = I.P. SET
 - = MAG. NAIL FND.
 - = MAG. NAIL SET
 - ▲ = R.R. SPK. FND.
 - ▲ = R.R. SPK. SET
 - = P.K. NAIL FND.
 - = P.K. NAIL SET
- I.P. Set are 13/16" I.D. iron pipe with cap inscribed EMHT INC

By  10/14/11
 Professional Surveyor No. 8250 Date



RECEIVED
 OCT 19 2011
 Franklin County Engineer
 Dean C. Ringle, P.E., P.S.

EMHT		Date: October 14, 2011
Evans, Mechwart, Hambleton & Tilton, Inc. Engineers • Surveyors • Planners • Scientists 5500 New Albany Road, Columbus, OH 43054 Phone: 614.775.4500 Toll Free: 888.775.3648 emht.com		Scale: 1" = 30'
		Job No.: 20110716
		Sheet: 1 of 1
REVISIONS		
MARK	DATE	DESCRIPTION