



Evans, Mechwart, Hambleton & Tilton, Inc.  
 Engineers • Surveyors • Planners • Scientists  
 5500 New Albany Road, Columbus, OH 43054  
 Phone: 614.775.4500 Toll Free: 888.775.3648  
 emht.com

# SURVEY OF ACREAGE PARCEL

## QUARTER TOWNSHIP 3, TOWNSHIP 2, RANGE 16

### UNITED STATES MILITARY LANDS

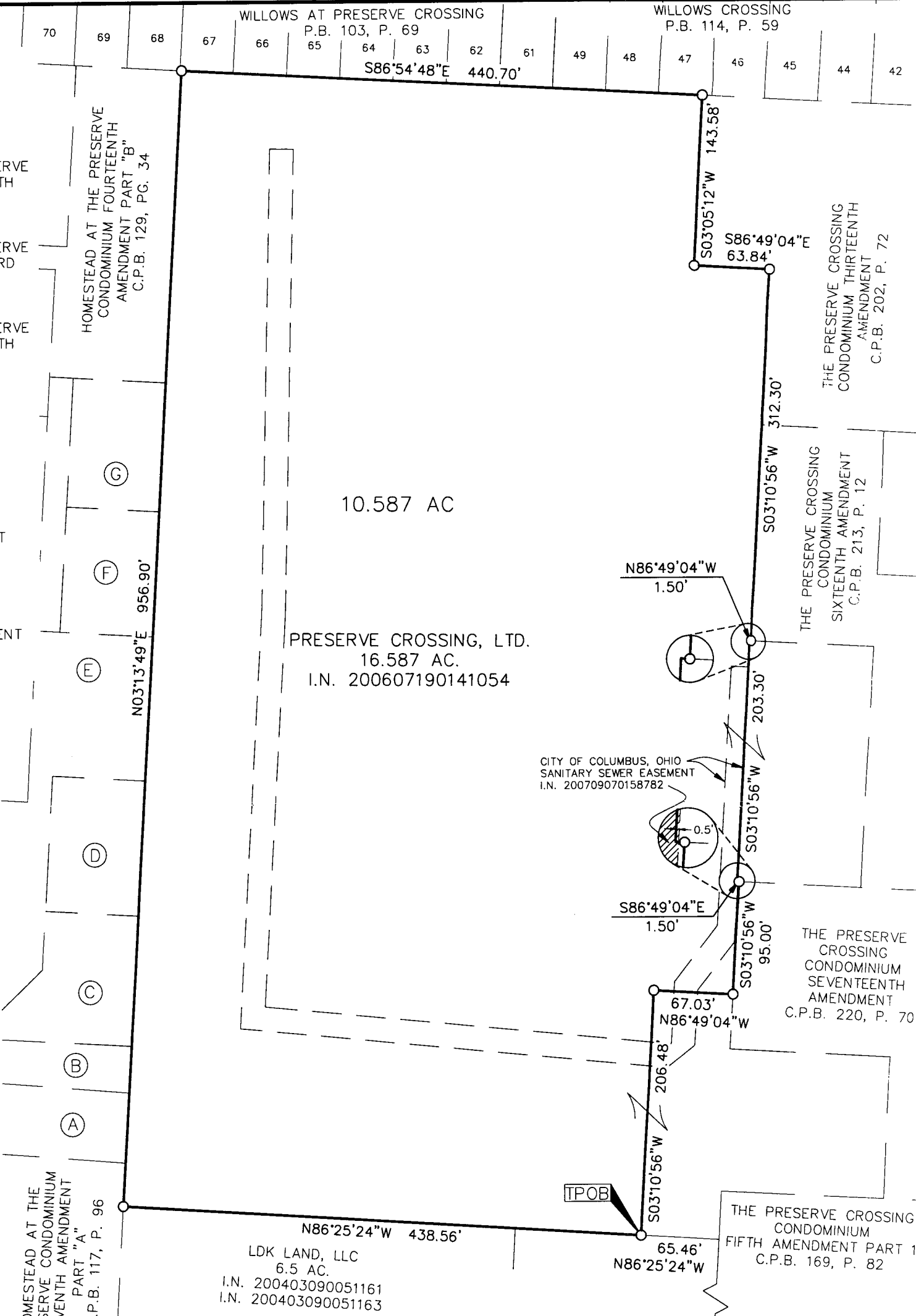
### CITY OF COLUMBUS, COUNTY OF FRANKLIN, STATE OF OHIO

Date: December 13, 2011

Job No. 2011-1560

Scale: 1" = 100'

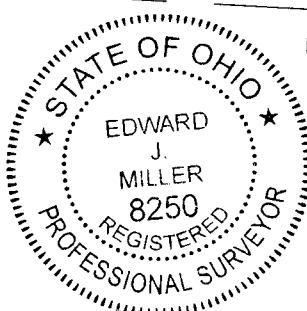
- (A) HOMESTEAD AT THE PRESERVE CONDOMINIUM SIXTH AMENDMENT PART "D" C.P.B. 100, P. 65
- (B) HOMESTEAD AT THE PRESERVE CONDOMINIUM TWENTY-SIXTH AMENDMENT PART "B" C.P.B. 196, P. 10
- (C) HOMESTEAD AT THE PRESERVE CONDOMINIUM TWENTY-THIRD AMENDMENT PART "C" C.P.B. 166, P. 90
- (D) HOMESTEAD AT THE PRESERVE CONDOMINIUM TWENTY-SIXTH AMENDMENT PART "A" C.P.B. 196, P. 10
- (E) HOMESTEAD AT THE PRESERVE CONDOMINIUM FOURTEENTH AMENDMENT PART "A" C.P.B. 129, P. 34
- (F) HOMESTEAD AT THE PRESERVE CONDOMINIUM TWENTY-THIRD AMENDMENT PART "D" C.P.B. 166, P. 90
- (G) HOMESTEAD AT THE PRESERVE CONDOMINIUM TWENTY-SECOND AMENDMENT C.P.B. 155, P. 33



**RECEIVED**

DEC 22 2011

Franklin County Engineer  
 Dean C. Ringle, P.E., P.S.



**BASIS OF BEARINGS:**

Bearings are based on the Ohio State Plane Coordinate System, South Zone per NAD 83 (1986 adjustment). Control for bearings was from coordinates of monuments FCGS 6666 and 6667, having a bearing of South 86°56'02" East for the centerline of Thompson Road, established by the Franklin County Engineering Department using Global Positioning System procedures and equipment.

**SURVEY NOTE:**

This survey was prepared using documents of record, prior plats of survey, and observed evidence located by an actual field survey performed in September 2004.

- = MON. FND.
- = I.P. SET

I.P. Set are 13/16" I.D. iron pipe with cap inscribed EMHT INC

By Edward J. Miller  
 Professional Surveyor No. 8250

Date 12/21/11

LDK LAND, LLC  
 3.30 AC.  
 I.N. 200403090051156  
 I.N. 200403090051159

THE PRESERVE CROSSING CONDOMINIUM SIXTH AMENDMENT C.P.B. 173, P. 99

PRESERVE CROSSING, LTD.  
 24.418 AC. (DEED)  
 I.N. 200410010229079

FCGS 5571

MORSE ROAD

J:\20111560\20111560SV\DWG\20111560BNDY.DWG plotted by BAXTER, THERESA on 12/21/2011 12:35:12 PM last saved by TBAXTER on 12/21/2011 12:31:01 PM