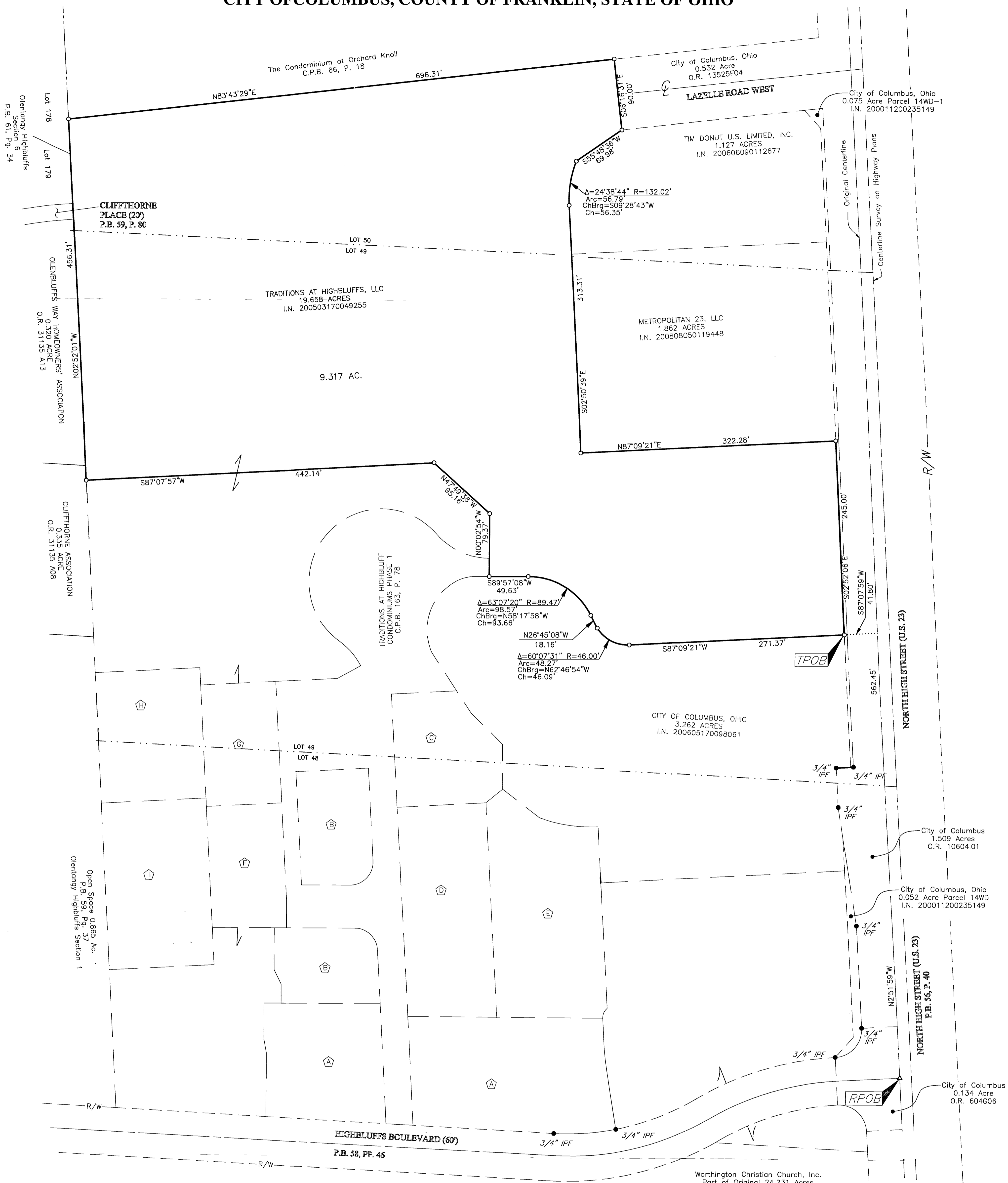


SURVEY OF ACREAGE PARCEL

LOCATED IN FARM LOTS 49 & 50 IN THE SECOND TIER OF OUTLOTS
QUARTER TOWNSHIP 2, TOWNSHIP 2, RANGE 18
UNITED STATES MILITARY LANDS
CITY OF COLUMBUS, COUNTY OF FRANKLIN, STATE OF OHIO



- Ⓐ TRADITIONS AT HIGHBLUFFS CONDOMINIUMS PHASE II FIRST AMENDMENT C.P.B. 165, P. 50
- Ⓑ TRADITIONS AT HIGHBLUFFS CONDOMINIUMS PHASE III SECOND AMENDMENT C.P.B. 165, P. 58
- Ⓒ TRADITIONS AT HIGHBLUFFS CONDOMINIUMS PHASE IV THIRD AMENDMENT C.P.B. 165, P. 66
- Ⓓ TRADITIONS AT HIGHBLUFFS CONDOMINIUMS PHASE V FOURTH AMENDMENT C.P.B. 165, P. 74
- Ⓔ TRADITIONS AT HIGHBLUFFS CONDOMINIUMS PHASE VI FIFTH AMENDMENT C.P.B. 165, P. 82
- Ⓕ TRADITIONS AT HIGHBLUFFS CONDOMINIUMS PHASE VII SIXTH AMENDMENT C.P.B. 191, P. 85
- Ⓖ TRADITIONS AT HIGHBLUFFS CONDOMINIUMS PHASE VIII SEVENTH AMENDMENT C.P.B. 192, P. 17
- Ⓗ EIGHTH AMENDMENT, PHASE IX TO THE TRADITIONS AT HIGHBLUFFS CONDOMINIUMS C.P.B. 192, P. 17
- Ⓘ NINTH AMENDMENT, PHASE X FOR THE TRADITIONS AT HIGHBLUFFS CONDOMINIUMS C.P.B. 212, P. 35

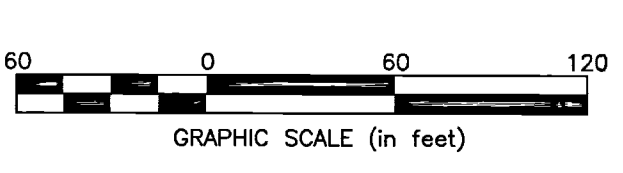
- = STONE FND.
 - = MON. FND.
 - = I.P. FND.
 - = I.P. SET
 - = MAG. NAIL FND.
 - = MAG. NAIL SET
 - ▲ = R.R. SPK. FND.
 - △ = R.R. SPK. SET
 - = P.K. NAIL FND.
- I.P. Set are 13/16" I.D. iron pipe with cap inscribed EMHT INC

RECEIVED

NOV 21 2011
Franklin County Engineer
Sean C. Ring's P.E., P.S.



By: *[Signature]*
Professional Surveyor No. 8250 Date



BASIS OF BEARINGS:
The bearings shown hereon are based on the Ohio State Plane Coordinate System, South Zone, NAD83 (1986 adjustment). Said bearings originated from a field traverse which was tied (referenced) to said coordinate system by GPS observations and observations of selected Delaware County monuments 97-187 and 97-061. The portion of the northerly right-of-way of Highbluffs Boulevard, having a bearing of North $86^{\circ}42'17''$ West, is designated the "basis of bearing" for this survey.

EMHT		Date: October 5, 2011
Evans, Mechwart, Hambleton & Ilton, Inc. Engineers • Surveyors • Planners • Scientists 3530 New Albany Road, Columbus, OH 43254 Phone: 614.775.4500 Toll free: 888.775.3448 emht.com		Scale: 1" = 60'
		Job No: 20111152
		Sheet: 1 of 1
REVISIONS		
MARK	DATE	DESCRIPTION