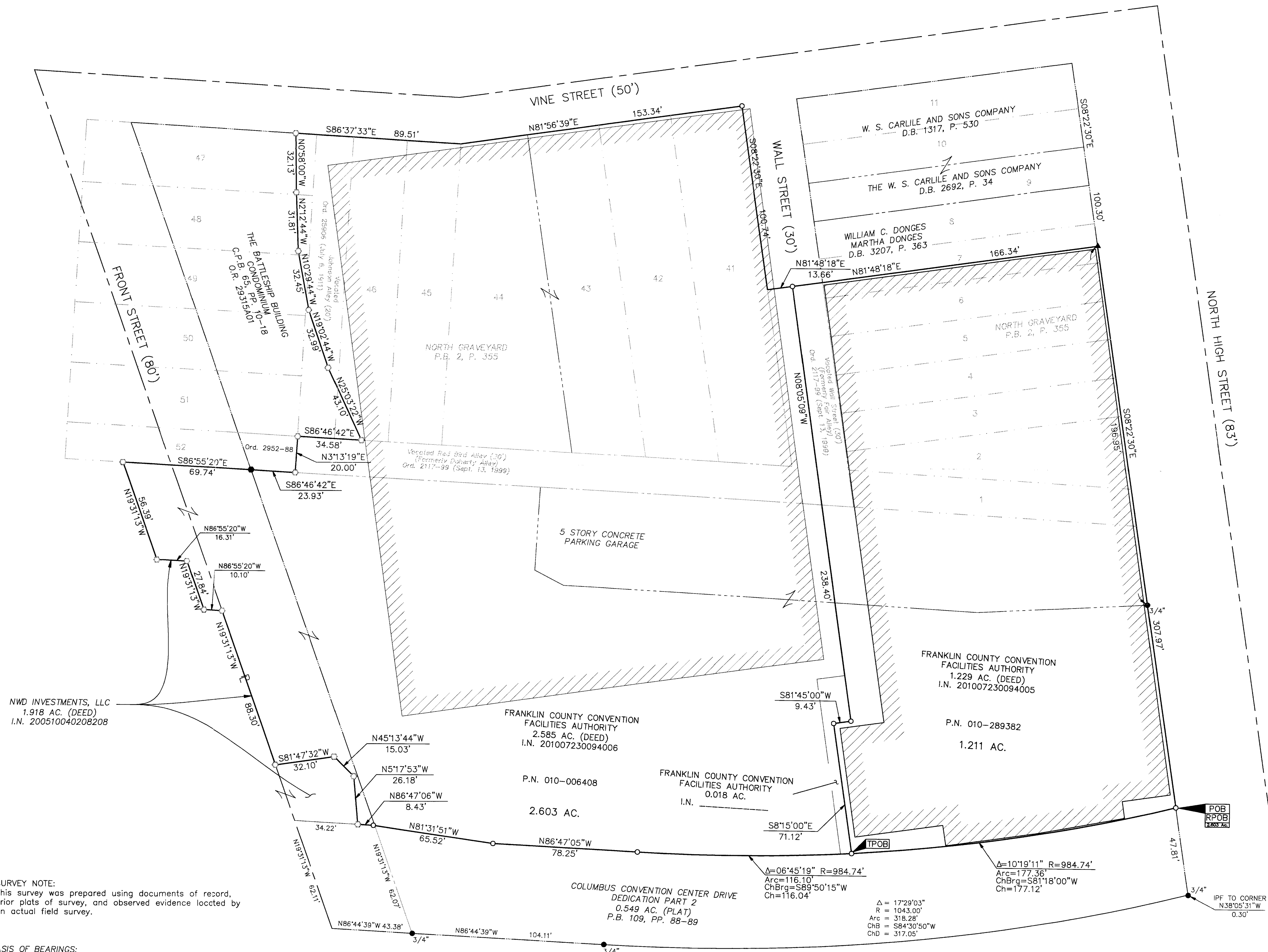


# BOUNDARY SURVEY

## HALF SECTION 10, SECTION 8, TOWNSHIP 5, RANGE 22

### REFUGEE LANDS

### CITY OF COLUMBUS, COUNTY OF FRANKLIN, STATE OF OHIO

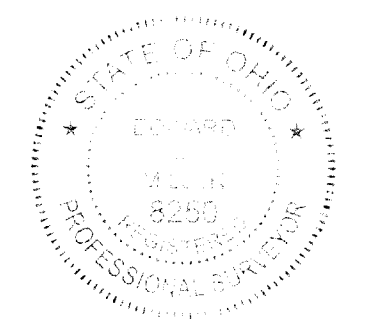


NOTE:  
 Auditor's Parcel Number 010-006408 is comprised of a total of 3.814 acres.

**RECEIVED**

OCT 17 2011

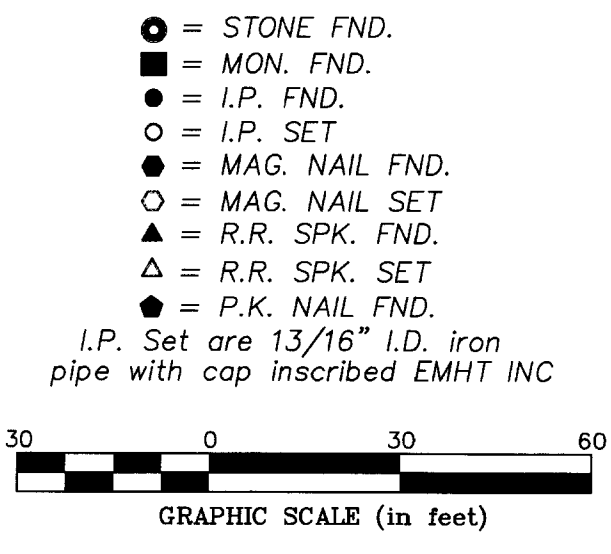
Franklin County Engineer  
 Dean O. Nagle, P.E., P.S.



By Edward J. Miller 10/18/11  
 Professional Surveyor No. 8250 Date

**SURVEY NOTE:**  
 This survey was prepared using documents of record, prior plats of survey, and observed evidence located by an actual field survey.

**BASIS OF BEARINGS:**  
 The bearings shown hereon are based on the Ohio State Plane Coordinate System, South Zone, NAD83 (1995). Said bearings originated from a field traverse which was referenced to said coordinate system by GPS observations and observations of monuments 4-83 and 13-83 as published by the Franklin County Engineer's Department. The portion of the centerline of Vine Street, having a bearing of South 86° 37' 33" East and monumented as shown hereon, is designated the "basis of bearing" for this survey.



<b>EMHT</b>		Date: October 6, 2011
Evans, Mechwart, Hambleton & Tilton, Inc. Engineers • Surveyors • Planners • Scientists 5500 New Albany Road, Columbus, OH 43054 Phone: 614.775.4800 Fax: 614.775.4800		Scale: 1" = 30'
M. C. M. X. X. V.		Job No: 20110600
		Sheet: 1 of 1
REVISIONS		
MARK	DATE	DESCRIPTION