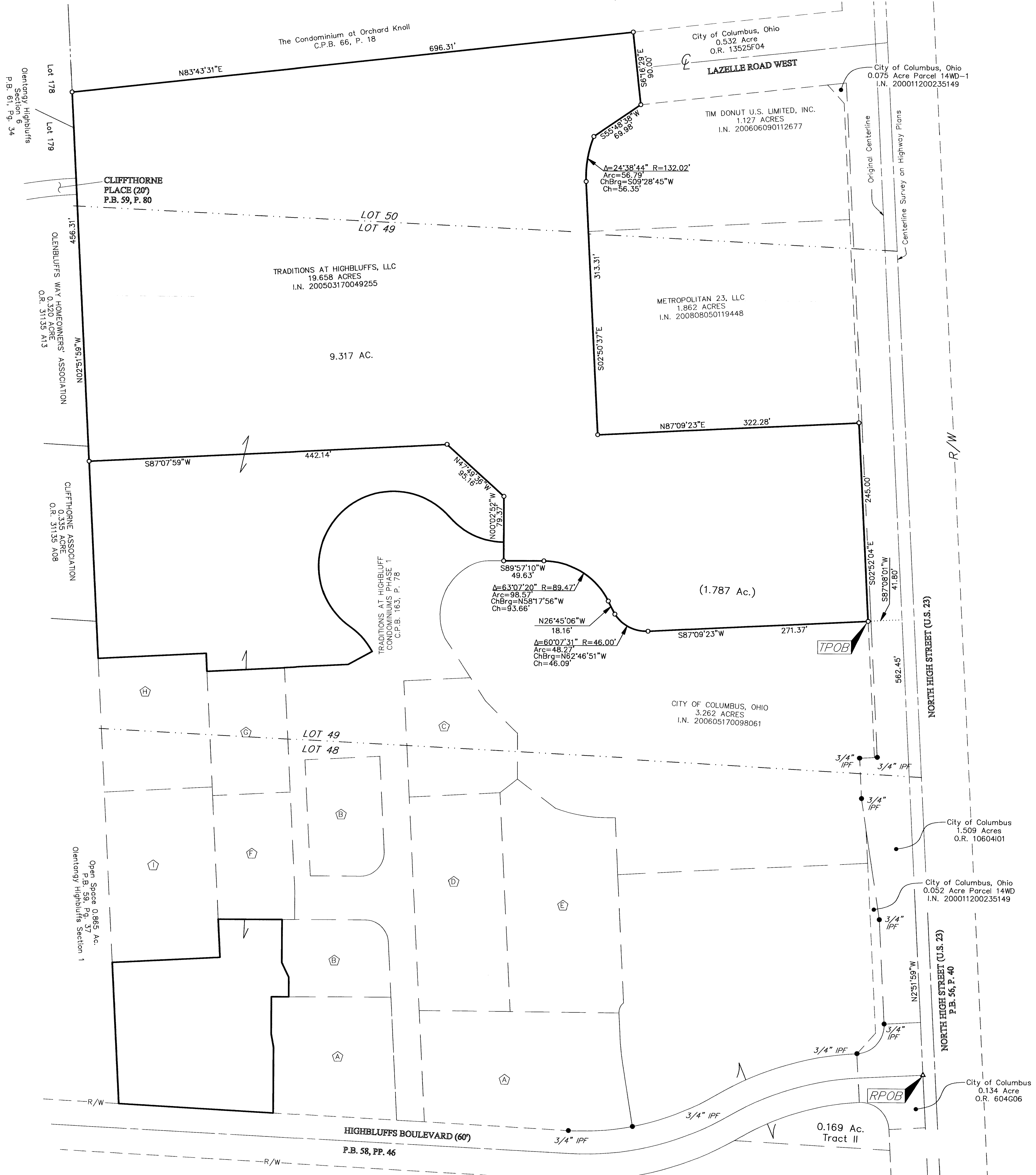


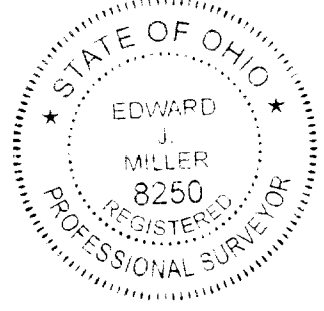
# SURVEY OF ACREAGE PARCEL

## LOCATED IN FARM LOTS 49 & 50 IN THE SECOND TIER OF OUTLOTS QUARTER TOWNSHIP 2, TOWNSHIP 2, RANGE 18 UNITED STATES MILITARY LANDS CITY OF COLUMBUS, COUNTY OF FRANKLIN, STATE OF OHIO



- = STONE FND.
  - = MON. FND.
  - = I.P. FND.
  - = I.P. SET
  - = MAG. NAIL FND.
  - = MAG. NAIL SET
  - ▲ = R.R. SPK. FND.
  - ▲ = R.R. SPK. SET
  - = P.K. NAIL FND.
- I.P. Set are 13/16" I.D. iron pipe with cap inscribed EMHT INC
- A TRADITIONS AT HIGHBLUFFS CONDOMINIUMS PHASE II FIRST AMENDMENT C.P.B. 165, P. 50
  - B TRADITIONS AT HIGHBLUFFS CONDOMINIUMS PHASE III SECOND AMENDMENT C.P.B. 165, P. 58
  - C TRADITIONS AT HIGHBLUFFS CONDOMINIUMS PHASE IV THIRD AMENDMENT C.P.B. 165, P. 66
  - D TRADITIONS AT HIGHBLUFFS CONDOMINIUMS PHASE V FOURTH AMENDMENT C.P.B. 165, P. 74
  - E TRADITIONS AT HIGHBLUFFS CONDOMINIUMS PHASE VI FIFTH AMENDMENT C.P.B. 165, P. 82
  - F TRADITIONS AT HIGHBLUFFS CONDOMINIUMS PHASE VII SIXTH AMENDMENT C.P.B. 191, P. 85
  - G TRADITIONS AT HIGHBLUFFS CONDOMINIUMS PHASE VIII SEVENTH AMENDMENT C.P.B. 192, P. 17
  - H EIGHTH AMENDMENT, PHASE IX TO THE TRADITIONS AT HIGHBLUFFS CONDOMINIUMS C.P.B. 192, P. 17
  - I NINTH AMENDMENT, PHASE X FOR THE TRADITIONS AT HIGHBLUFFS CONDOMINIUMS C.P.B. 212, P. 35

**BASIS OF BEARINGS:**  
The bearings shown hereon are based on the Ohio State Plane Coordinate System, South Zone, NAD83 (1986 adjustment). Said bearings originated from a field traverse which was tied (referenced) to said coordinate system by GPS observations and observations of selected Delaware County monuments 97-187 and 97-061. The portion of the northerly right-of-way of Highbluffs Boulevard, having a bearing of North 86°42'17" West, is designated the "basis of bearing" for this survey.



By Edward J. Miller  
Professional Surveyor No. 8250 Date

<b>EMHT</b>		Date: October 5, 2011
Evans, Mechwart, Hambleton & Illori, Inc. Engineers • Surveyors • Planners • Scientists 5500 New Albany Road, Columbus, OH 43204 Phone: 614.775.4300 Toll free: 888.775.3648 emht.com		Scale: 1" = 60'
		Job No: 20111152
		Sheet: 1 of 1
REVISIONS		
MARK	DATE	DESCRIPTION

