

SURVEY OF ACREAGE PARCELS

QUARTER TOWNSHIP 4, TOWNSHIP 1, RANGE 16

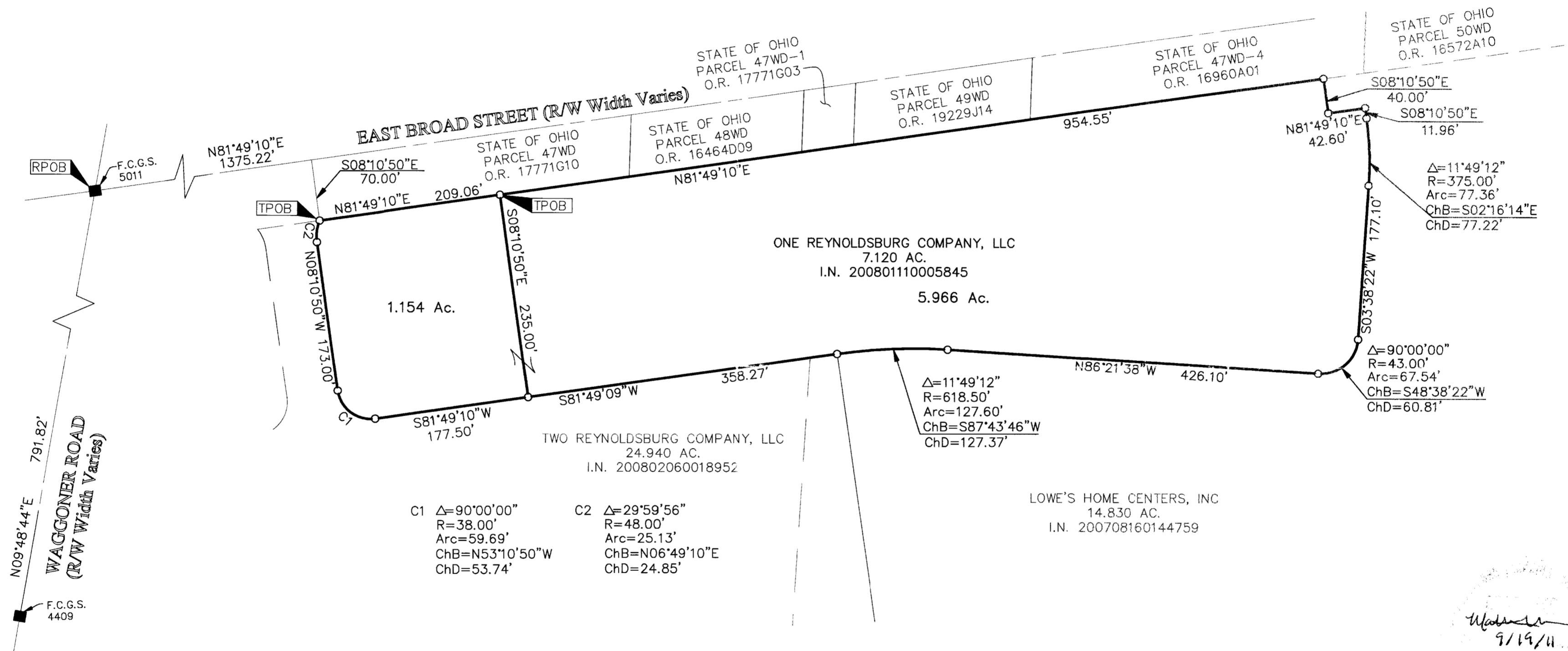
UNITED STATES MILITARY LANDS

CITY OF REYNOLDSBURG, COUNTY OF FRANKLIN, STATE OF OHIO

RECEIVED

NOV 08 2011

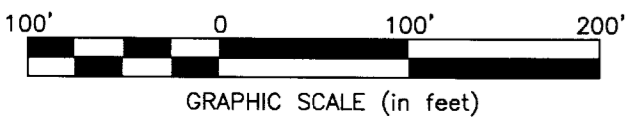
Franklin County Auditor
Dean C. Ringler, Jr.



Matthew J. Kelly
9/19/11
4364-PL

By *Matthew J. Kelly* 9/15/11
Professional Surveyor No. 8307

- = STONE FND.
 - = MON. FND.
 - = I.P. FND.
 - = I.P. SET
 - = MAG. NAIL FND.
 - = MAG. NAIL SET
 - ▲ = R.R. SPK. FND.
 - △ = R.R. SPK. SET
 - ◆ = P.K. NAIL FND.
- I.P. Set are 13/16" I.D. iron pipe with cap inscribed EMHT INC



Note:
This survey was prepared using documents of record, prior plats of survey, and observable field evidence.

BASIS OF BEARINGS:
Bearings are based on the Ohio State Plane Coordinate System per NAD83, South Zone (1986 adjustment). Control for bearings was from coordinates of monuments FCGS 5011 & FCGS 4409, having a bearing of South 09° 48' 44" West, as established by the Franklin County Engineering Department.

| | | |
|--|-------------------------|-------------|
| <p>Evans, Mechwart, Hambleton & Tilton, Inc. Engineers • Surveyors • Planners • Scientists 5500 New Albany Road, Columbus, OH 43054 Phone: 614.775.4500 Toll Free: 888.775.3648 emht.com</p> | Date: September 9, 2011 | |
| | Scale: 1" = 100' | |
| | Job No: 2011-1213 | |
| | Sheet: 1 of 1 | |
| REVISIONS | | |
| MARK | DATE | DESCRIPTION |
| | | |
| | | |
| | | |
| | | |