

EMHT
 Evans, Mechwart, Hambleton & Tilton, Inc.
 Engineers • Surveyors • Planners • Scientists
 5500 New Albany Road, Columbus, OH 43054
 Phone: 614.775.4500 Toll Free: 888.775.3648
 emht.com

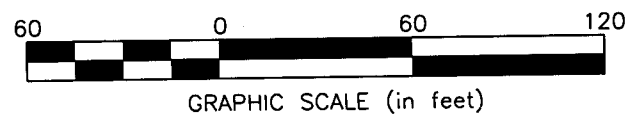
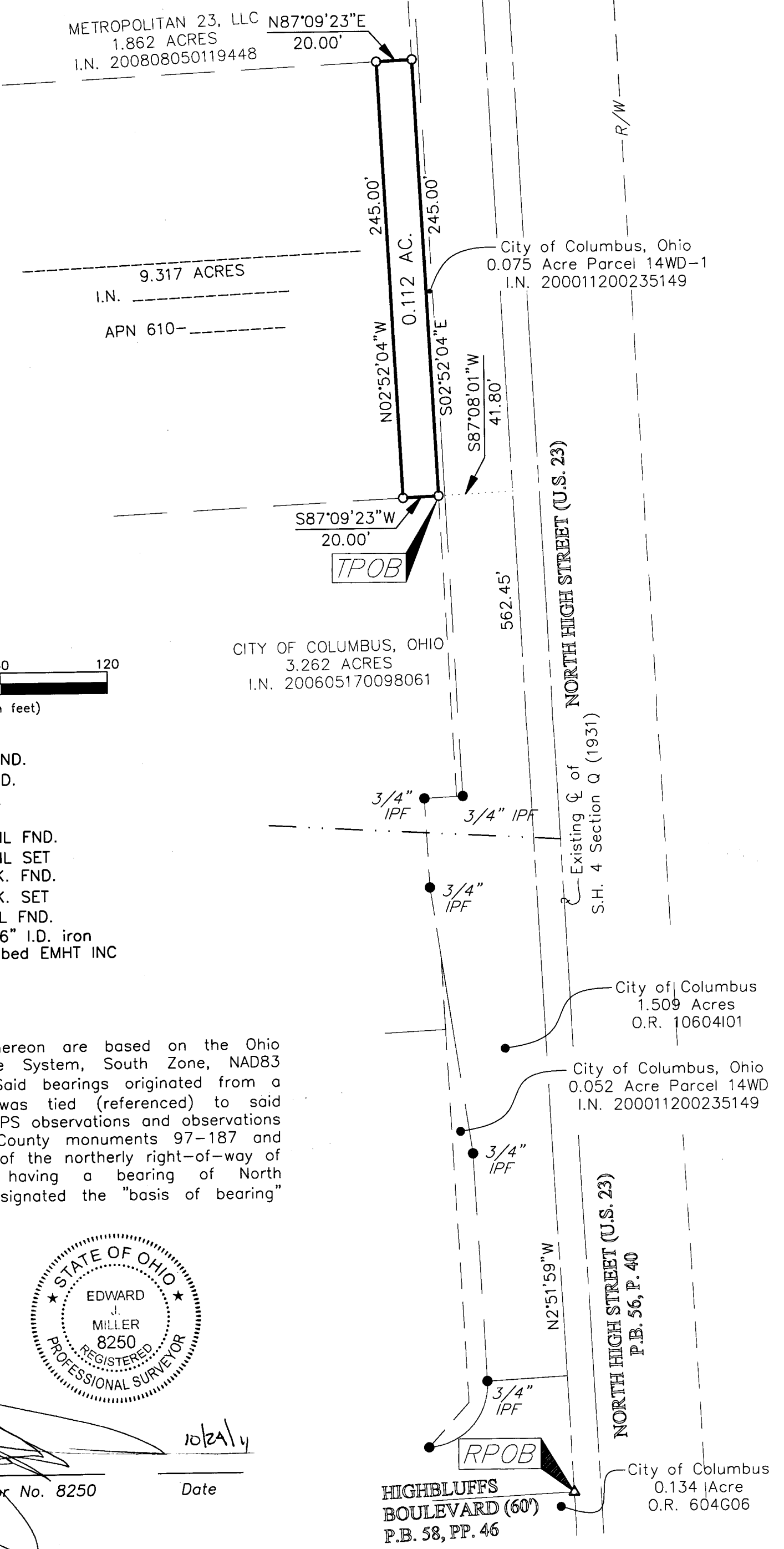
SURVEY OF ACREAGE PARCEL
 LOCATED IN FARM LOT 49 IN THE SECOND TIER OF OUTLOTS
 QUARTER TOWNSHIP 2, TOWNSHIP 2, RANGE 18
 UNITED STATES MILITARY LANDS
 CITY OF COLUMBUS, COUNTY OF FRANKLIN, STATE OF OHIO

Date: October 17, 2011 Job No. 20111152 Scale: 1" = 60'

RECEIVED

OCT 27 2011

Franklin County Engineer
 Dean C. Ringle, P.E., P.S.



- = STONE FND.
- = MON. FND.
- = I.P. FND.
- = I.P. SET
- = MAG. NAIL FND.
- = MAG. NAIL SET
- ▲ = R.R. SPK. FND.
- △ = R.R. SPK. SET
- ◆ = P.K. NAIL FND.

I.P. Set are 13/16" I.D. iron pipe with cap inscribed EMHT INC

BASIS OF BEARINGS:
 The bearings shown hereon are based on the Ohio State Plane Coordinate System, South Zone, NAD83 (1986 adjustment). Said bearings originated from a field traverse which was tied (referenced) to said coordinate system by GPS observations and observations of selected Delaware County monuments 97-187 and 97-061. The portion of the northerly right-of-way of Highbluffs Boulevard, having a bearing of North 86°42'17" West, is designated the "basis of bearing" for this survey.



By [Signature] Date 10/29/11
 Professional Surveyor No. 8250

J:\20111152\20111152BNDY_ROW.DWG plotted by MASTON, JOHN on 10/21/2011 3:03:41 PM last saved by JMASTON on 10/19/2011 2:11:10 PM