

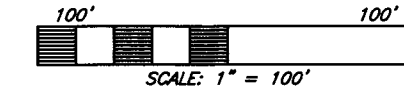
**RECEIVED**

OCT 24 2011

Franklin County Engineer  
Dean C. Ringle, P.E., P.S.

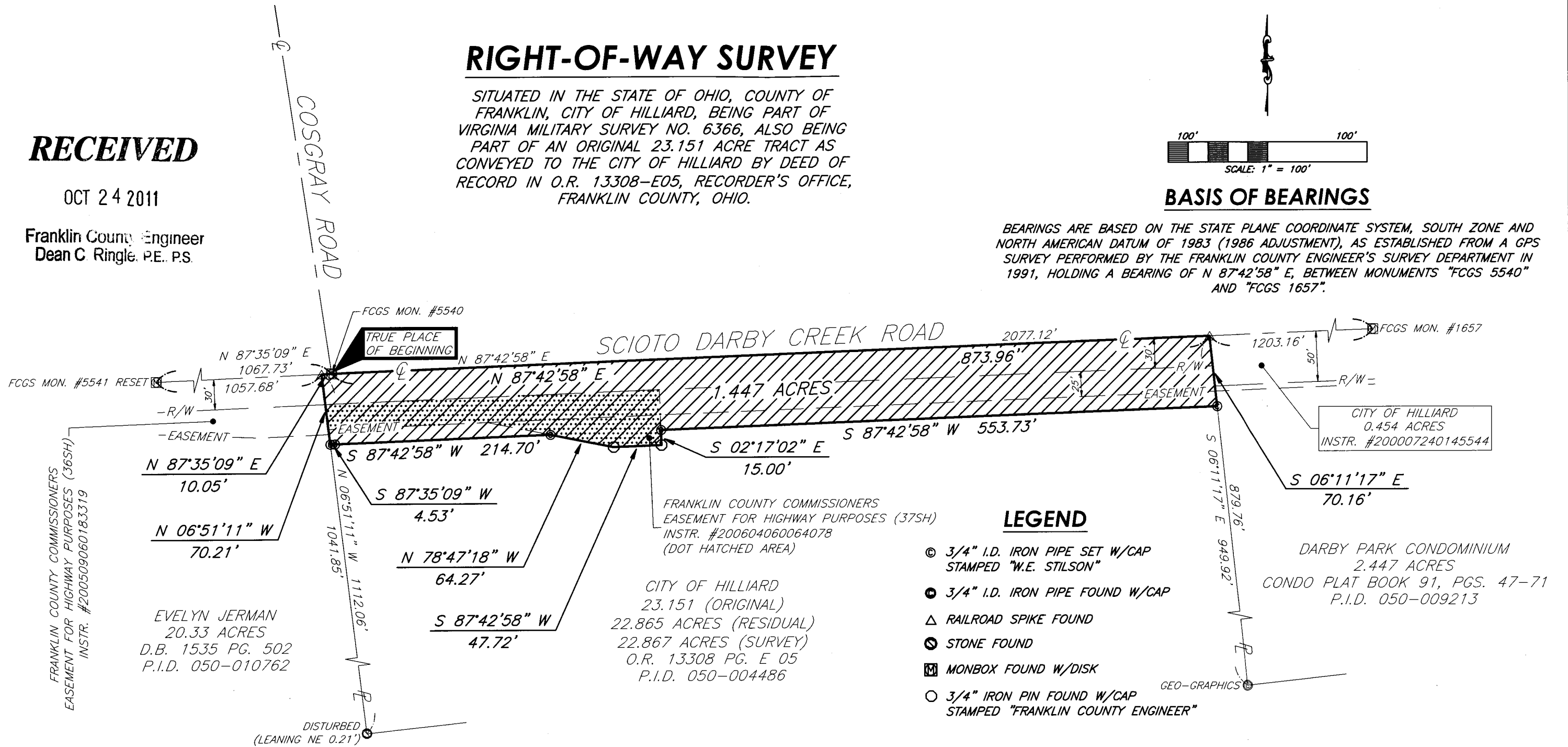
# RIGHT-OF-WAY SURVEY

SITUATED IN THE STATE OF OHIO, COUNTY OF FRANKLIN, CITY OF HILLIARD, BEING PART OF VIRGINIA MILITARY SURVEY NO. 6366, ALSO BEING PART OF AN ORIGINAL 23.151 ACRE TRACT AS CONVEYED TO THE CITY OF HILLIARD BY DEED OF RECORD IN O.R. 13308-E05, RECORDER'S OFFICE, FRANKLIN COUNTY, OHIO.



## BASIS OF BEARINGS

BEARINGS ARE BASED ON THE STATE PLANE COORDINATE SYSTEM, SOUTH ZONE AND NORTH AMERICAN DATUM OF 1983 (1986 ADJUSTMENT), AS ESTABLISHED FROM A GPS SURVEY PERFORMED BY THE FRANKLIN COUNTY ENGINEER'S SURVEY DEPARTMENT IN 1991, HOLDING A BEARING OF N 87°42'58" E, BETWEEN MONUMENTS "FCGS 5540" AND "FCGS 1657".



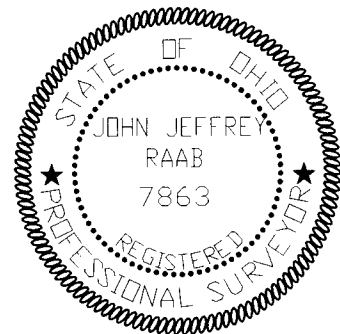
## LEGEND

- ⊙ 3/4" I.D. IRON PIPE SET W/CAP STAMPED "W.E. STILSON"
- ⊙ 3/4" I.D. IRON PIPE FOUND W/CAP
- △ RAILROAD SPIKE FOUND
- ⊙ STONE FOUND
- ⊠ MONBOX FOUND W/DISK
- 3/4" IRON PIN FOUND W/CAP STAMPED "FRANKLIN COUNTY ENGINEER"

DARBY PARK CONDOMINIUM  
2.447 ACRES  
CONDO PLAT BOOK 91, PGS. 47-71  
P.I.D. 050-009213

## CERTIFICATION

I HEREBY CERTIFY THIS PLAT WAS MADE BY USING FIELD MEASUREMENTS OBTAINED BY AN ACTUAL FIELD SURVEY CONDUCTED UNDER MY DIRECT SUPERVISION IN SEPTEMBER, 2011.



| Revision | By | Date |
|----------|----|------|
|          |    |      |
|          |    |      |
|          |    |      |
|          |    |      |

*John Jeffrey Raab*  
JOHN JEFFREY RAAB, OHIO PROFESSIONAL SURVEYOR NO. 7863  
10/18/11  
DATE



**W.E. STILSON**  
CONSULTING GROUP

355 E. Campus View Blvd. | Suite 250  
Columbus, Ohio 43235  
Office: 614.847.4670 | Fax: 614.847.1648  
www.stilsonconsulting.com

|              |                       |         |          |              |           |            |           |
|--------------|-----------------------|---------|----------|--------------|-----------|------------|-----------|
| Drawn By:    | RDR                   | Date:   | 09-19-11 | Project No.: | 111010.10 | Sheet No.: | 1/1       |
| Approved By: | JJR                   | Scale:  | 1"=100'  | Points D.B.: | 111010.10 | File No.:  | 111010.10 |
| CAD:         | Right-of-Way_Take.dwg | X-Ref.: | N/A      |              |           |            |           |