

SURVEY OF A 2.654 ACRES FOR PROPOSED 50' RIGHT-OF-WAY

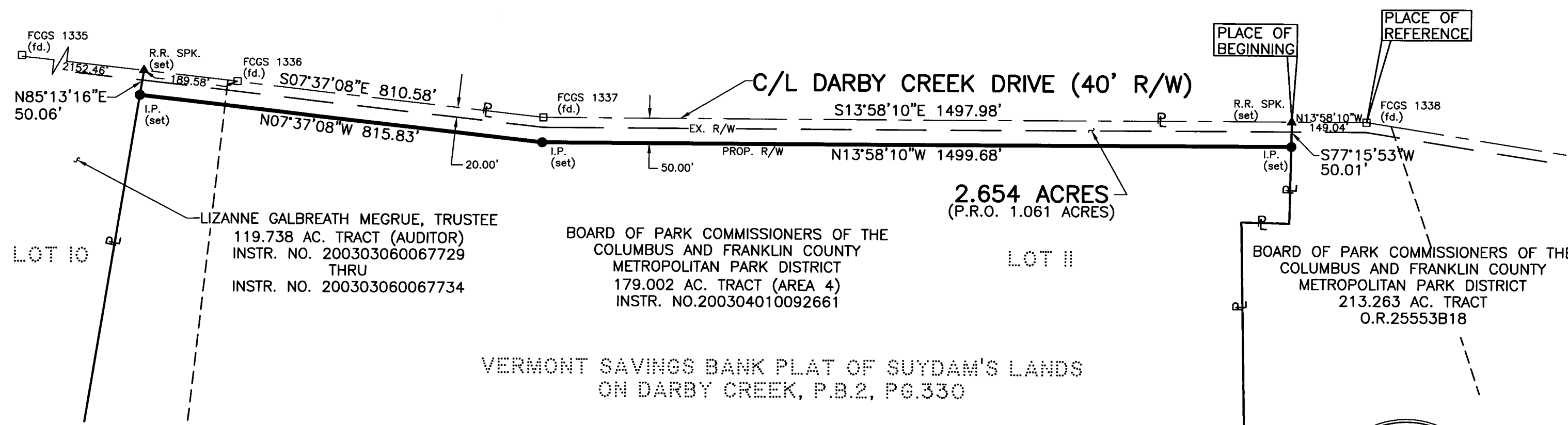
SITUATE IN THE STATE OF OHIO, COUNTY OF FRANKLIN, TOWNSHIP OF PLEASANT,
BEING A PART OF VIRGINIA MILITARY SURVEY NUMBER 2602, BEING ALSO A PART
OF LOTS 10 AND 11 OF THE VERMONT SAVINGS BANK PLAT OF SUYDAM'S LANDS
ON DARBY CREEK, PLAT BOOK 2, PAGE 330.



GRID NORTH



NOTE
IRON PINS SET ARE 5/8" REBAR WITH PLASTIC
CAP STAMPED "FRANKLIN COUNTY ENGINEER".



LIZANNE GALBREATH MGRUE, TRUSTEE
119.738 AC. TRACT (AUDITOR)
INSTR. NO. 200303060067729
THRU
INSTR. NO. 200303060067734

BOARD OF PARK COMMISSIONERS OF THE
COLUMBUS AND FRANKLIN COUNTY
METROPOLITAN PARK DISTRICT
179.002 AC. TRACT (AREA 4)
INSTR. NO. 200304010092661

BOARD OF PARK COMMISSIONERS OF THE
COLUMBUS AND FRANKLIN COUNTY
METROPOLITAN PARK DISTRICT
213.263 AC. TRACT
O.R. 25553B18

VERMONT SAVINGS BANK PLAT OF SUYDAM'S LANDS
ON DARBY CREEK, P.B.2, PG.330

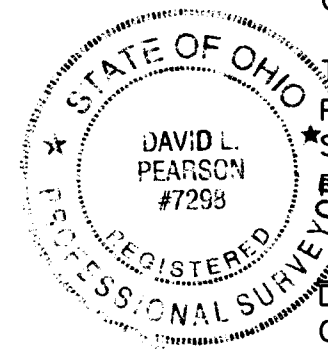
BASIS OF BEARING:

BEARINGS ARE BASED ON THE BEARING OF (N13°58'10"W), AS SHOWN ALONG THE
CENTERLINE OF DARBY CREEK DRIVE FROM A CENTERLINE SURVEY PLAT OF DARBY
CREEK DRIVE, DATED 05/27/2010, ON FILE IN THE FRANKLIN COUNTY ENGINEER'S
OFFICE.

RECEIVED

SEP 21 2011

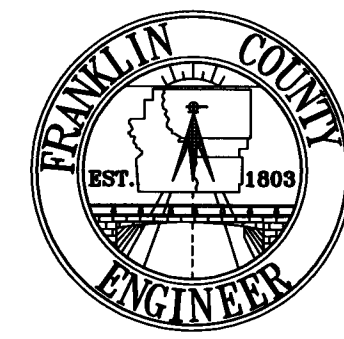
Franklin County Engineer
Dean C. Ringle, P.E., P.S.



THIS PLAT WAS PREPARED FROM AN ACTUAL FIELD SURVEY OF THE PREMISES
PERFORMED BY THE FRANKLIN COUNTY ENGINEER'S SURVEY DEPARTMENT IN
SEPTEMBER, 2011, ALONG WITH PUBLIC RECORDS ON FILE IN THE FRANKLIN COUNTY
RECORDER'S OFFICE AND FRANKLIN COUNTY ENGINEER'S OFFICE.

David L. Pearson
DAVID L. PEARSON
OHIO REGISTERED SURVEYOR NO. 7298

09/20/2011
DATE



DATE: 09-20-11		DRAWING: METRO RW	
		DRAWN BY: DKT	
REVISIONS			
DATE	DESCRIPTION	BY	