

PROJ. NO: 200600121
 DRAWN BY: BPB
 CHECKED BY: JEM
 PAGE 1 OF 1



AMERICAN
STRUCTUREPOINT
 INC.

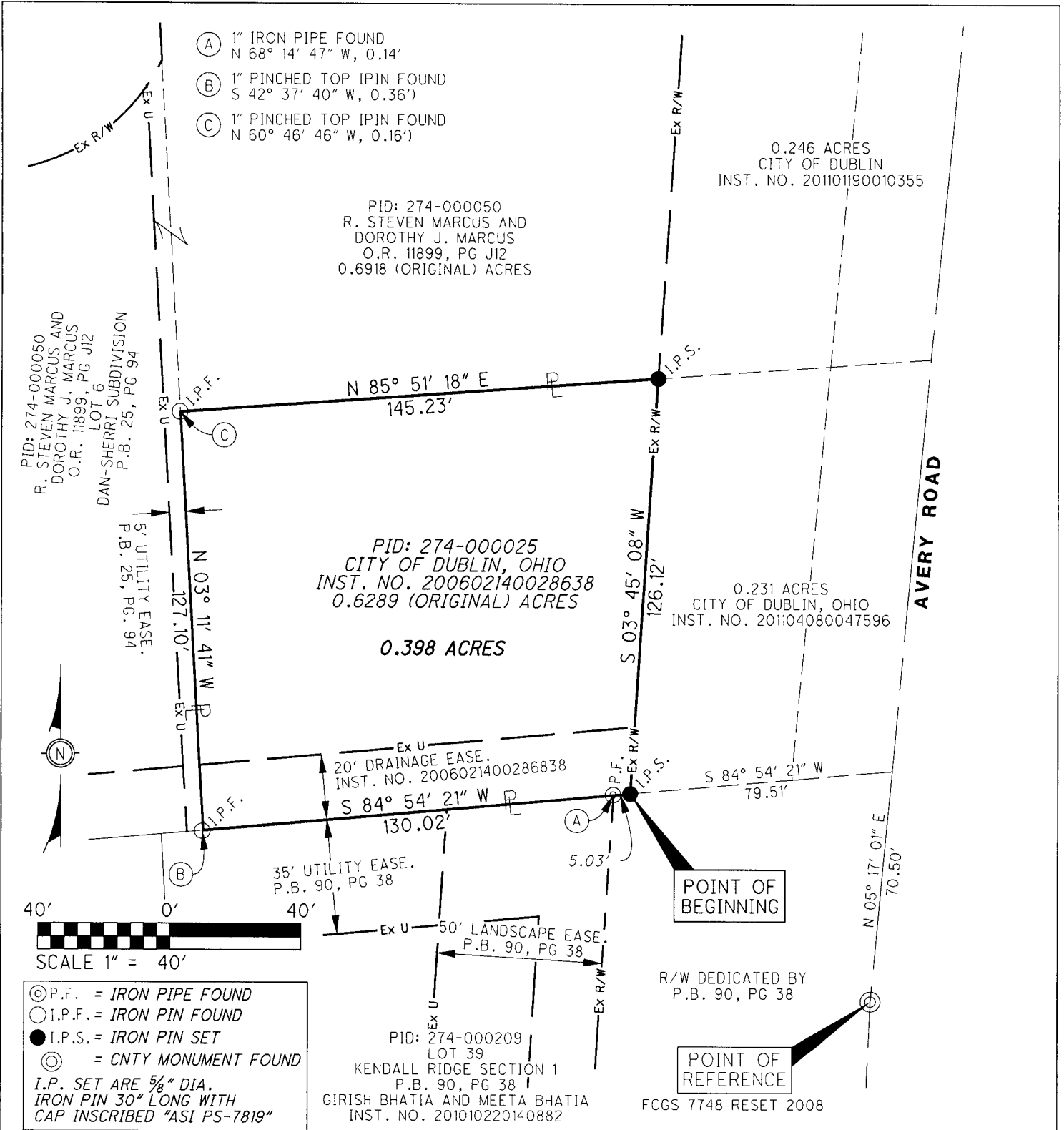
2550 CORPORATE EXCHANGE DR, STE 300
 COLUMBUS, OH 43231
 TEL 614.901.2235 FAX 614.901.2236
 www.structurepoint.com

EXHIBIT "B"

0.398 ACRES

CITY OF
 DUBLIN, OHIO

SITUATED IN THE STATE OF OHIO, COUNTY OF FRANKLIN, CITY OF
 DUBLIN, LOCATED IN VIRGINIA MILITARY SURVEY NUMBER 3004.



BASIS OF BEARING:

BEARINGS SHOWN HEREIN ARE BASED ON THE BEARING FOR THE CENTERLINE OF SURVEY FOR AVERY ROAD (N 05° 17' 01" E), WHICH IS REFERENCED TO THE OHIO STATE PLANE COORDINATE SYSTEM, SOUTH ZONE AND THE NORTH AMERICAN DATUM OF 1983 (1986 ADJUSTMENT), AS ESTABLISHED UTILIZING A GPS SURVEY PERFORMED IN 2006 BETWEEN FRANKLIN COUNTY MONUMENTS "7748 RESET" AND "7749".

I HEREBY CERTIFY THAT:

THIS DRAWING REPRESENTS THE RESULTS OF AN ACTUAL FIELD SURVEY OF THE PREMISES PERFORMED BY G.J. BERDING SURVEYING, INC IN MAY 2006. THIS DRAWING IS CORRECT TO THE BEST OF MY KNOWLEDGE AND BELIEF.

Brian P. Bingham
 BRIAN P. BINGHAM, P.S. NO. 8438
 AMERICAN STRUCTUREPOINT, INC.

9/16/2011
 DATE

