

RECEIVED

SEP 21 2011

Franklin County Engineer
Dean C. Ringle, P.E., P.S.

G-7-F



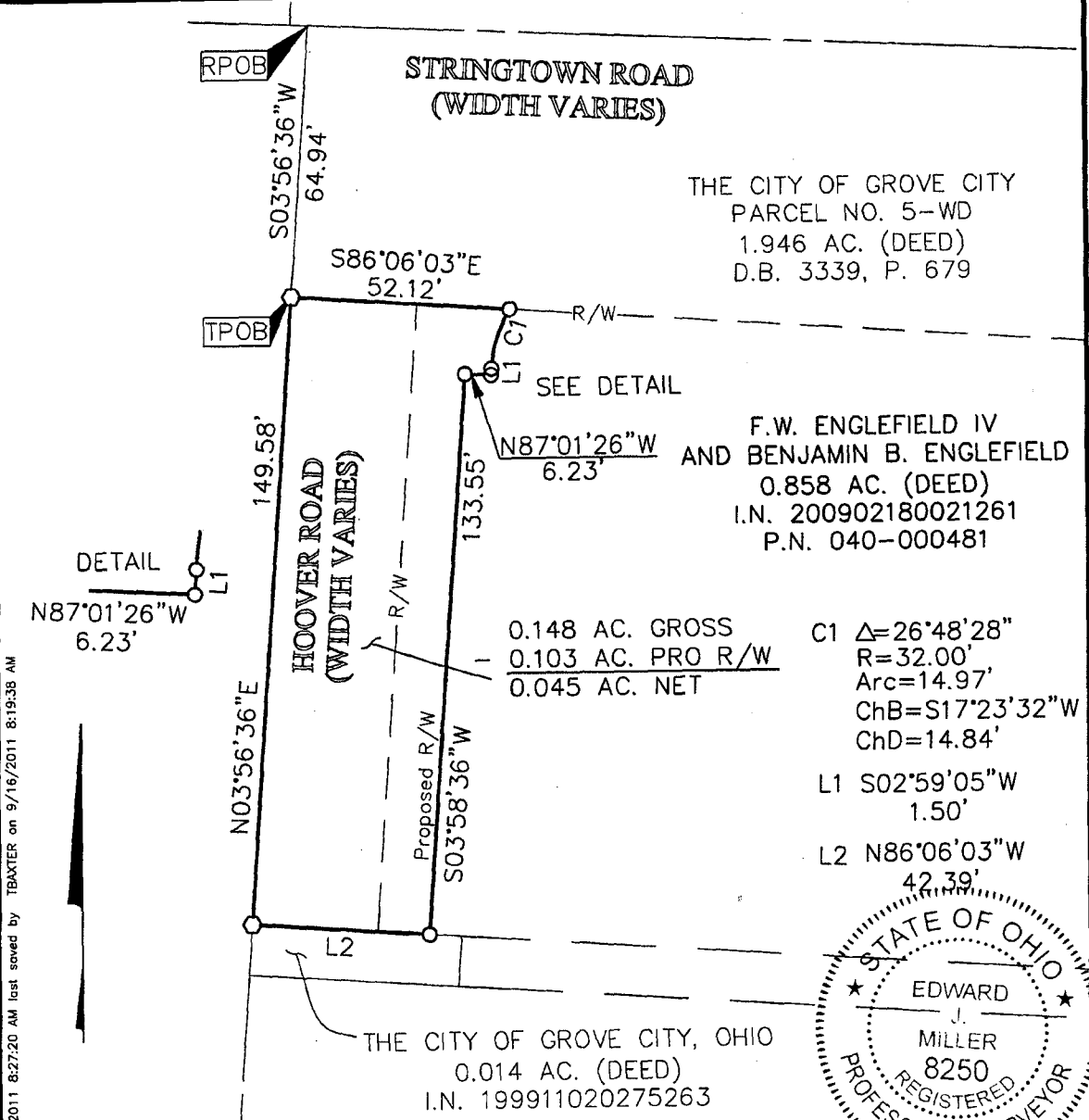
Evans, Mechwart, Hambleton & Tilton, Inc.
Engineers • Surveyors • Planners • Scientists
5500 New Albany Road, Columbus, OH 43054
Phone: 614.775.4500 Toll Free: 888.773.3648
emht.com

SURVEY OF ACREAGE PARCEL
VIRGINIA MILITARY SURVEY NO. 8231
CITY OF GROVE CITY, COUNTY OF FRANKLIN, STATE OF OHIO

Date: September 14, 2011

Job No. 2010-1652

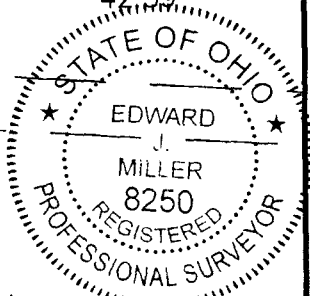
Scale: 1" = 40'

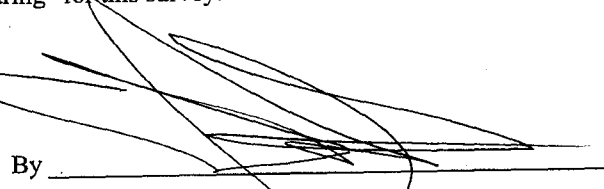


J:\20101652\20101652SYA\DWG\20101652BNDY.DWG plotted by BAXTER, THERESA on 9/16/2011 8:27:20 AM last saved by BAXTER on 9/16/2011 8:19:38 AM

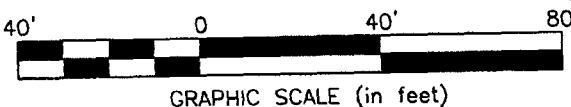
BASIS OF BEARINGS:

The bearings shown on this survey are based on the Ohio State Plane Coordinate System, South Zone, NAD83 (2007). Said bearings originated from a field traverse which was tied (referenced) to said coordinate system by GPS observations and observations of selected Franklin County Engineering Department Monuments "FCGS 0024 RESET" and "FCGS 5539". The portion of the centerline of Stringtown Road, having a bearing of South 84°50'05" East and monumented as shown hereon, is designated the "basis of bearing" for this survey.



By 
Edward J. Miller
Professional Surveyor No. 8250

9/20/11
Date



SURVEY NOTE:
This survey was prepared using documents of record, prior plats of survey, and observed evidence located by an actual field survey.