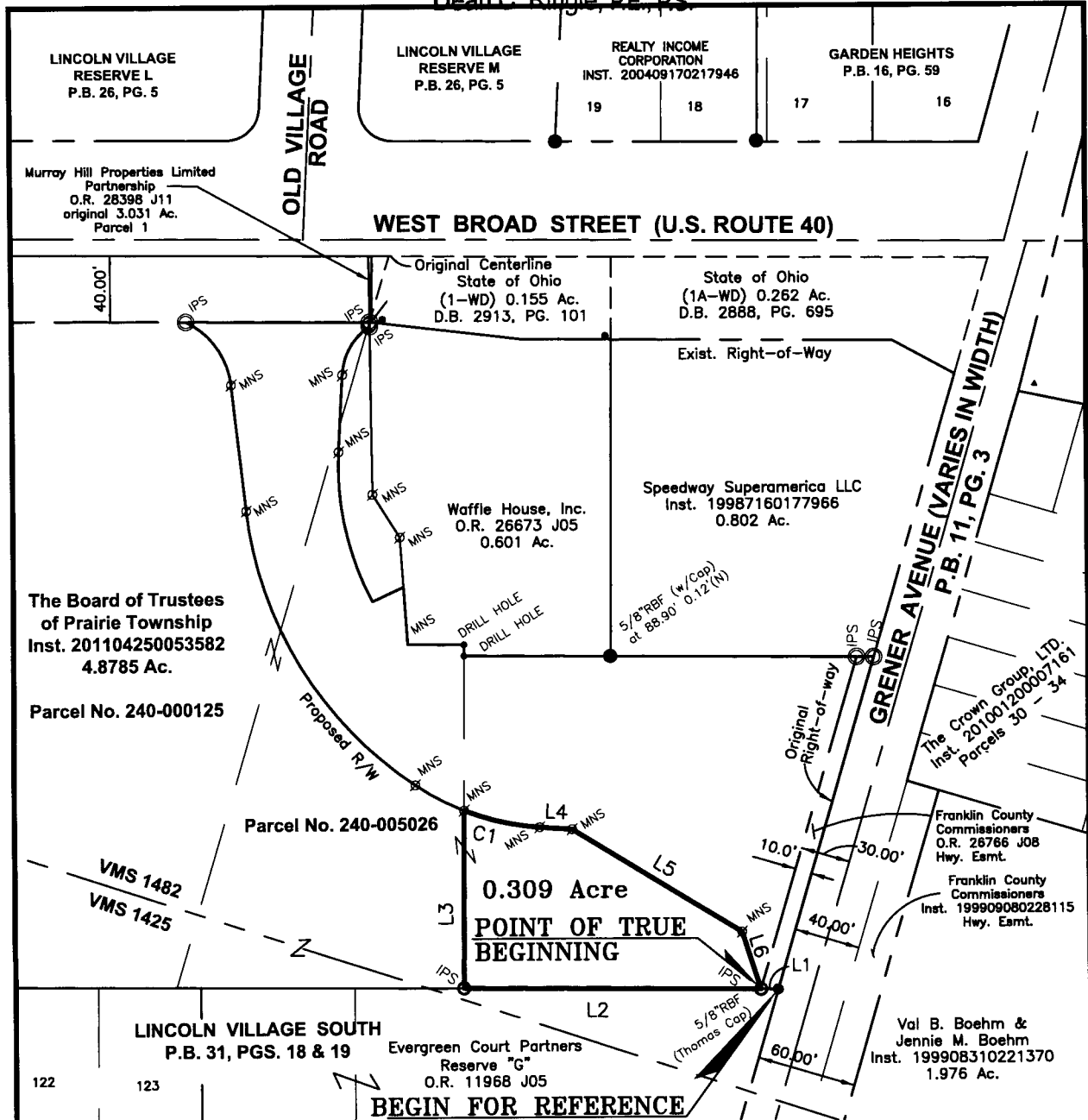


RECEIVED

AUG 25 2011

Franklin County Engineer
Dean C. Ringle, P.E., P.S.

C-3-F



SCALE IN FEET

CURVE	DELTA ANGLE	RADIUS	ARC LENGTH	CHORD BEARING	CHORD LENGTH
C1	17°26'43"	155.00'	47.19'	S 80°52'47" E	47.01'

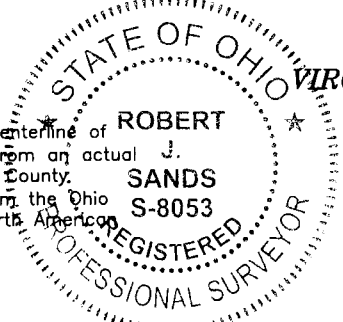
LINE	BEARING	DISTANCE
L1	S 86°53'15" W	10.40'
L2	S 86°53'15" W	179.98'
L3	N 03°09'31" W	107.14'
L4	S 89°36'08" E	19.74'
L5	S 62°18'59" E	119.89'
L6	S 21°23'27" E	36.43'

BASIS OF BEARINGS:

The bearings shown hereon are based on the centerline of Greener Avenue as being North 12°55'00" East, from an actual field survey using G.P.S. methods from Franklin County Monuments #1359, #1360, and #Frank 140, from the Ohio State Plane Coordinate System, South Zone, North American Datum 1983 (1986 adjustment).

STANTEC CONSULTING SERVICES INC.

Robert J. Sands
 Robert J. Sands
 Professional Surveyor No. S-8053
 Date: 08/24/11



LEGEND

- IPS Iron Pipe Set, 3/4 inch, 30 inches in length, with a yellow cap bearing the name "STANTEC".
- IPF Iron Pipe Found
- RBF Rebar Found
- MNF Mag Nail Found
- MNS Mag Nail Set

**EXHIBIT OF
0.309 ACRE**

SITUATE IN
 PRAIRIE TOWNSHIP
 FRANKLIN COUNTY, OHIO
 LYING IN
 VIRGINIA MILITARY DISTRICT
 SURVEY 1482

Scale: 1 inch = 100 Feet

Date: August, 2011

Prepared by:



1500 Lake Shore Drive
 Columbus, Ohio 43204
 Phone: (614) 486-4383
 Fax: (614) 486-1046

Stantec

Copyright Reserved

The Contractor shall verify and be responsible for all dimensions. DO NOT scale the drawing - any errors or omissions shall be reported to Stantec without delay. The Copyrights to all designs and drawings are the property of Stantec. Reproduction or use for any purposes other than that authorized by Stantec is forbidden.