

I-7-D



Evans, Mechwart, Hambleton & Tilton, Inc.  
Engineers • Surveyors • Planners • Scientists  
5500 New Albany Road, Columbus, OH 43054  
Phone: 614.775.4500 Toll Free: 888.775.3648

emht.com

# SURVEY OF ACREAGE PARCEL

## QUARTER TOWNSHIP 3, TOWNSHIP 2, RANGE 17

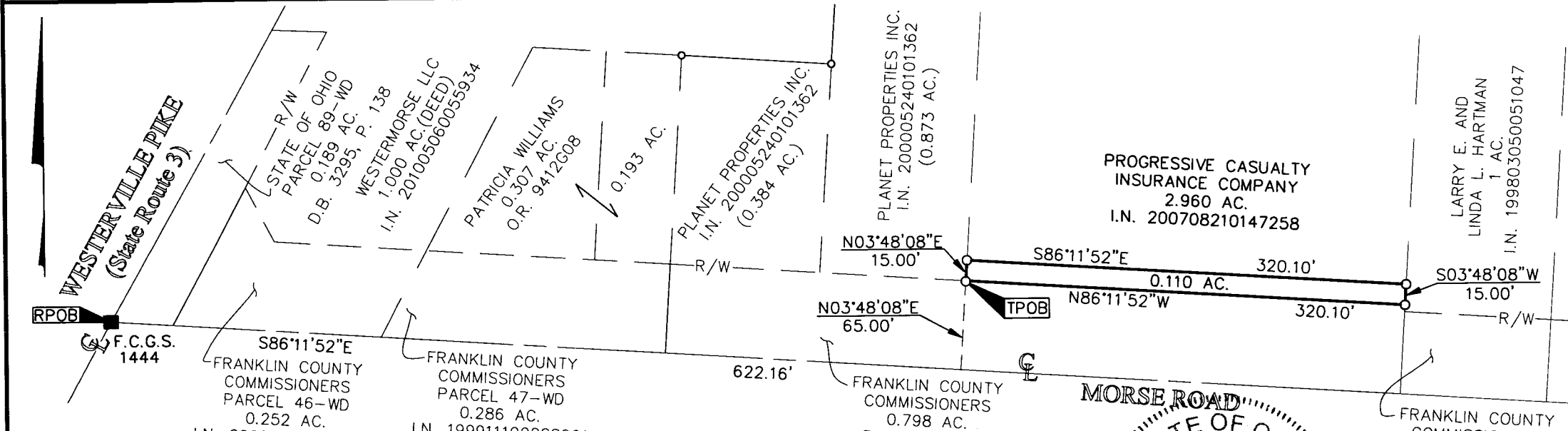
### UNITED STATES MILITARY LANDS

### CITY OF COLUMBUS, FRANKLIN COUNTY, OHIO

Date: July 16, 2011

Scale: 1" = 100'

Job No. 2011-0116



#### SURVEY NOTE:

This survey was prepared using documents of record, prior plats of survey, and observed evidence located by an actual field survey.

#### BASIS OF BEARINGS:

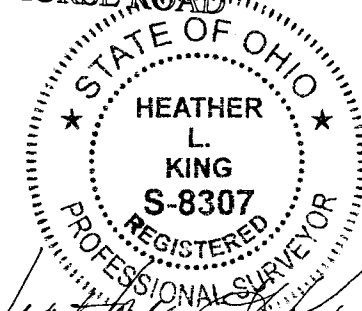
The Bearings shown hereon are based on the Ohio State Plane Coordinate System, South Zone, as per NAD83 (1986 Adjustment). Control for bearings was from coordinates of monuments Frank 76 and Clark Azimuth, with a centerline bearing of South 86° 11' 52" East, for a portion of Morse Road, established by the Franklin County Engineering Department, using Global Positioning System procedures and equipment.

- = MON. FND.
- = I.P. FND.
- = I.P. SET
- = MAG. NAIL SET
- ◆ = P.K. NAIL FND.

I.P. Set are 13/16" I.D. iron pipe with cap inscribed EMHT INC



GRAPHIC SCALE (in feet)



By Heather L. King  
Professional Surveyor No. 8307

7/21/11  
Date

J:\20110116\20110116SV\DWG\20110116BNDY.DWG plotted by BAXTER, THERESA on 7/18/2011 10:27:46 AM last saved by TBAXTER on 7/18/2011 9:54:52 AM  
Xrefs: 100300CRD.DWG

Franklin County Engineer  
Dean C. Ringle, PE., PS.

JUL 25 2011

RECEIVED