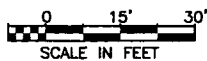
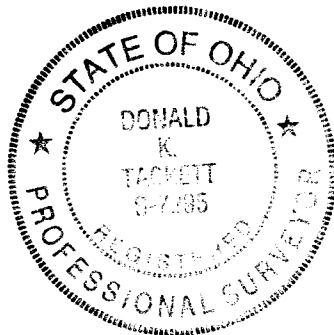




GRID NORTH



SURVEY OF A 0.069 ACRE TRACT QTR. TOWNSHIP 3, TOWNSHIP 2 NORTH, RANGE 17 WEST UNITED STATES MILITARY DISTRICT BLENDON TOWNSHIP, FRANKLIN COUNTY, OHIO



WORLD BUSINESS SERVICES, INC.
1.4810 AC. (ORIGINAL)
O.R.06267D04

WORLD BUSINESS SERVICES, INC.
0.052 AC.
INSTR. NO.200106140134178

4885 SINCLAIR ROAD, LLC,
AN OHIO LIMITED LIABILITY COMPANY
0.680 AC. (AUDITOR)
INSTR. NO. 200906220090034

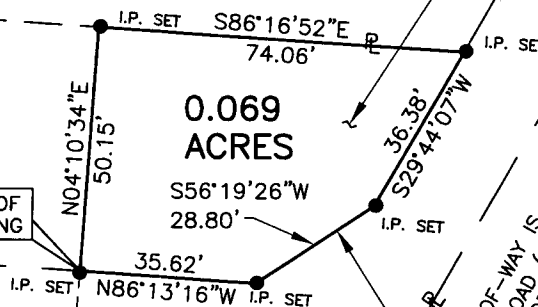
FRANKLIN COUNTY COMMISSIONERS
FRANKLIN COUNTY, OHIO
0.417 AC. (ORIGINAL)
INSTRUMENT NO. 200105150106480

FRANKLIN COUNTY COMMISSIONERS
FRANKLIN COUNTY, OHIO
0.204 AC.
INSTRUMENT NO. 200103210057198

FCGS 1136

MORSE RD.
S86°13'16"E 540.66'

PLACE OF BEGINNING



0.069
ACRES

EX. R/W
FRANKLIN COUNTY COMMISSIONERS
FRANKLIN COUNTY, OHIO
0.090 AC.
INSTR. NO. 200012150253201

RIGHT-OF-WAY IS SHOWN PER THE
MORSE ROAD (COUNTY ROAD NO.17)
PLANS OF 1999 ON RECORD IN
THE FRANKLIN COUNTY ENGINEER'S OFFICE

WESTERVILLE RD. (S.R. 3)
N29°44'07"E 3158.14'

PLACE OF REFERENCE

FCGS 1444

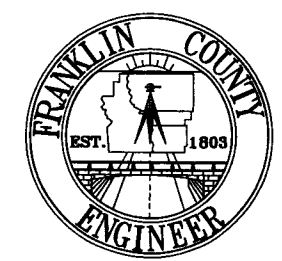
FCGS 1210

RECEIVED

AUG 04 2011

Franklin County Engineer
Dean C. Ringle, P.E., P.S.

NOTES:
I.P.'S SET ARE 5/8" REBAR WITH
YELLOW PLASTIC CAPS STAMPED
"FRANKLIN COUNTY ENGINEER"



BASIS OF BEARINGS:

BEARINGS ARE BASED ON THE BEARING (S86°13'16"E) ALONG THE CENTERLINE OF MORSE ROAD AS SHOWN ON 1999 ROADWAY PLANS FOR THE FRANKLIN COUNTY MORSE ROAD ON RECORD AT THE FRANKLIN COUNTY ENGINEER'S OFFICE, FRANKLIN COUNTY, OHIO.

THIS PLAT WAS PREPARED FROM AN ACTUAL FIELD SURVEY PERFORMED BY THE FRANKLIN COUNTY ENGINEER'S OFFICE, IN MAY 2000, ALONG WITH PUBLIC RECORDS ON FILE IN THE FRANKLIN COUNTY RECORDER'S OFFICE AND THE FRANKLIN COUNTY ENGINEER'S OFFICE.

DONALD K. TACKETT
OHIO REGISTERED SURVEYOR NO.7295

Donald K. Tackett
DATE Aug 3, 2011

DATE: 08/03/2011	DRAWING: LIONS DEN 3	
	DRAWN BY: DKT	
REVISIONS		
DATE	DESCRIPTION	BY