

J:\10\10-174\dwg\SURVEY\10174RW.dwg by: dchiesa on 05/09/2011 10:45:38 am for M-E Companies, Inc.

STATE OF OHIO, COUNTY OF FRANKLIN, CITY OF COLUMBUS, SECTION 1, TOWNSHIP 11, RANGE 21, CONGRESS LANDS

BEARING REFERENCE
 BEARINGS SHOWN HEREON ARE BASED ON SOUTH 05°24'29" WEST FOR THE WESTERLY RIGHT-OF-WAY LINE OF GENDER ROAD AS REFERENCE IN OFFICIAL RECORD VOLUME 15953, PAGE F10.

- LEGEND**
- ⊙ IRON PIN FOUND (CAPPED AS NOTED)
 - ⊙ IRON PIN SET
 1" O.D. PIPE 30" LONG
 "M-E COMPANIES/S-6872"
 - RAILROAD SPIKE FOUND

P. RONALD SABATINO
 O.R.V. 15953, PG. F10
 5.791 ACRES (ORIG.)

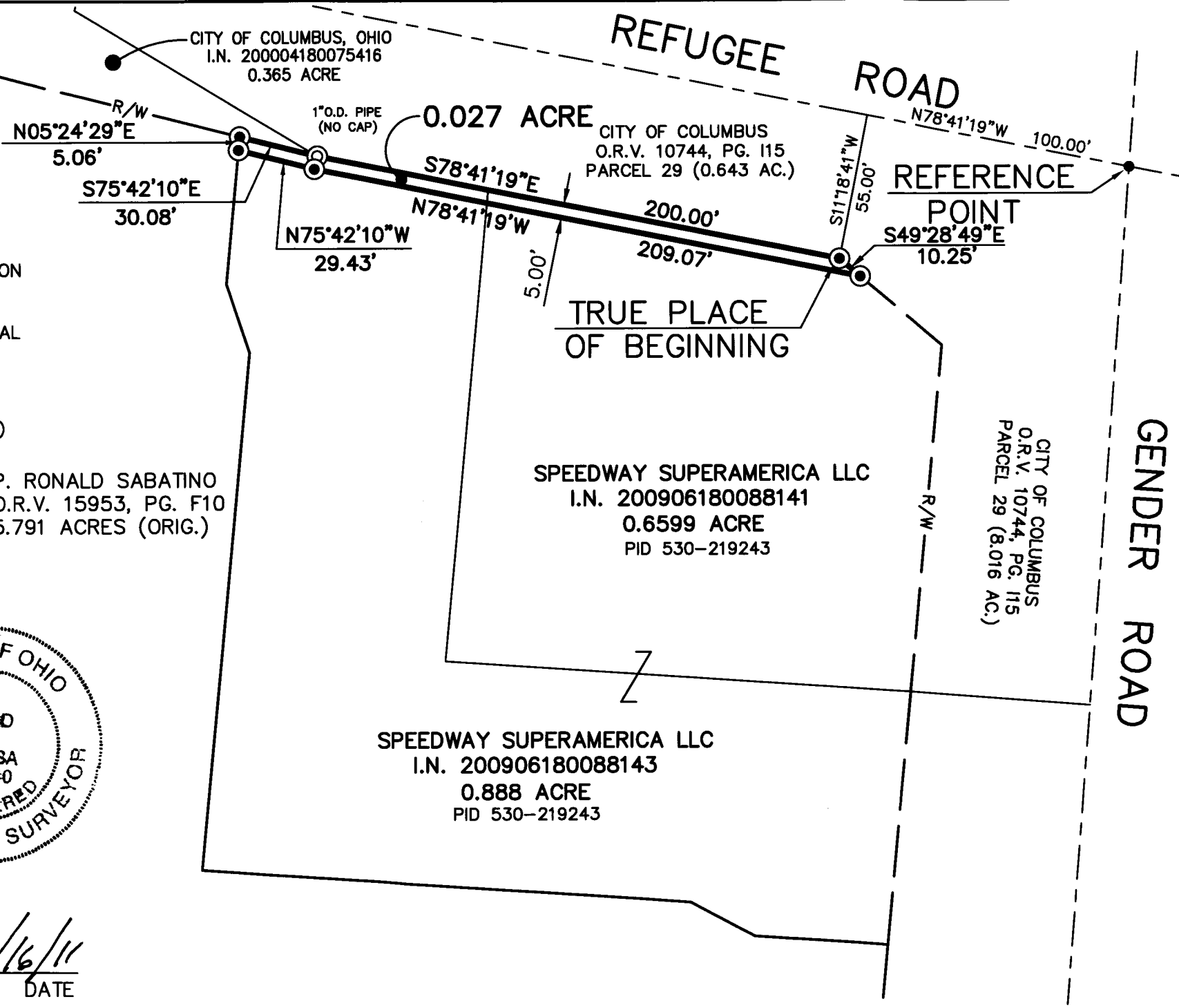
RECEIVED

JUN 21 2011

Franklin County Engineer
 Dean C. Ringle, P.E., P.S.



BY *David L. Chiesa* 3/16/11
 DAVID L. CHIESA P.S. #7740 DATE



635 Brookside Boulevard
 Westerville, OH 43081
 Contact: Dave Chiesa
 614-818-4900 ext. 225
 Fax: 614-818-4902
 www.mecompanies.com

RIGHT-OF-WAY DEDICATION EXHIBIT
 GENDER ROAD & REFUGEE ROAD
 COLUMBUS, OHIO

