



Group, Inc.

Engineering & Surveying

Phone: (614) 220-9122

444 South Front Street, Columbus, Ohio, 43215

Fax: (614) 224-6607

Email: info@brhgroup.com

SITUATED IN THE STATE OF OHIO, COUNTY OF FRANKLIN, VILLAGE OF OBETZ, IN THE NORTHWESTERLY QUARTER OF SECTION 30, TOWNSHIP 11, RANGE 21, CONGRESS LANDS EAST OF THE SCIOTO RIVER, BEING 5.815 ACRES OF LAND OUT OF THAT ORIGINAL 127.498 ACRE TRACT AS DESCRIBED IN A DEED TO CENTERPOINT INVESTMENT LLC, OF RECORD IN INSTRUMENT NUMBER 200402200036797, ALL REFERENCES TO RECORDS ARE ON FILE IN THE RECORDER'S OFFICE, FRANKLIN COUNTY, OHIO.

● - IRON PINS SET ARE 5/8" REBAR 30" LONG WITH YELLOW PLASTIC CAP STAMPED "BRH GROUP".

PARCEL: 150-000794
ROSEMARIE WATTERS, TRUSTEE
4.12 ACRES
INSTRUMENT NUMBER
200009260195497

S 86°10'10" E
74.01'

PARCEL: 186-000399
EXETER CENTERPOINT I LLC
30.851 ACRES (TRACT 1)
INSTRUMENT NUMBER
201105030057368

S 43°15'34" E ~ 433.18'

S 38°39'41" E
41.96'

S 03°49'48" W
51.39'

PARCEL: 150-000796
RODNEY W. HARRIS
5.0 ACRES
OFFICIAL RECORD VOLUME
27238 G11

HAMILTON TOWNSHIP
VILLAGE OF OBETZ

5.815 ACRES

PARCEL: 186-000246
CENTERPOINT INVESTMENT LLC
127.498 ACRES (ORIGINAL)
INSTRUMENT NUMBER
200402200036797

CURVE DATA

C-1
Δ = 145°28'50"
R = 62.00
A = 157.43'
CH = S 03°49'48" W
CH = 118.42'

C-2
Δ = 72°44'25"
R = 29.00
A = 36.82'
CH = S 32°32'24" E
CH = 34.39'

C-3
Δ = 13°38'30"
R = 230.00
A = 54.76'
CH = S 02°59'27" E
CH = 54.63'

"NOTE"
FINAL PLAT
CENTERPOINT PHASE I
P. B. 110, PG. 59

POINT OF BEGINNING

N 03°49'50" E
16.50'

N 03°48'54" E
84.52'

N 86°22'45" W ~ 446.51'

"SEE NOTE"

ORIGINAL TOY ROAD

WESTPOINT DRIVE P.B. 110, PG. 59
VILLAGE OF OBETZ
MADISON TOWNSHIP

FCGS 5207
S.W. CORNER
N.W. QUARTER
SECTION 30

THE VILLAGE OF OBETZ OHIO
2.920 ACRES (PARCEL B-WD)
INSTRUMENT NUMBER
200510310229048

RELOCATED TOY ROAD

RECEIVED

MAY 26 2011

Franklin County Engineer
Dean C. Ringle, P.E., P.S.

BEARINGS ARE BASED ON NORTH 86°22'45" WEST, ALONG THE NORTHERLY RIGHT OF WAY LINE OF TOY ROAD, AS DELINEATED ON THE PLAT "CENTERPOINT PHASE 1", OF RECORD IN PLAT BOOK 110, PAGE 59, ON FILE IN THE RECORDER'S OFFICE, FRANKLIN COUNTY, OHIO.



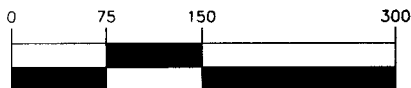
THE FOREGOING PLAT HAS BEEN PREPARED FROM AN ACTUAL FIELD SURVEY OF THE PREMISES IN MAY 2011 BY BRH GROUP, INC., UNDER THE DIRECT SUPERVISION OF JOHN L. PRICE, REGISTERED PROFESSIONAL SURVEYOR NUMBER 7159.

BRH GROUP, INC.

John L. Price
JOHN L. PRICE
PROFESSIONAL SURVEYOR No. 7159

05/25/2011

GRAPHIC SCALE



SCALE: 1 inch = 150ft.

40136