

L-2-F



Evans, Mechwart, Hambleton & Tilton, Inc.
 Engineers • Surveyors • Planners • Scientists
 5500 New Albany Road, Columbus, OH 43054
 Phone: 614.775.4500 Toll Free: 888.775.3648
 emht.com

SURVEY OF ACREAGE PARCEL

SECTION 24, TOWNSHIP 11, RANGE 21

CONGRESS LANDS

CITY OF CANAL WINCHESTER, COUNTY OF FRANKLIN, STATE OF OHIO

Date: May 25, 2011

Scale: 1" = 100'

Job No: 2011-0652

BASIS OF BEARINGS:

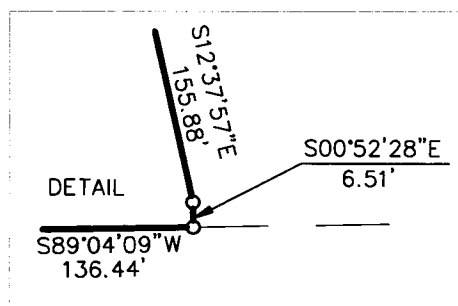
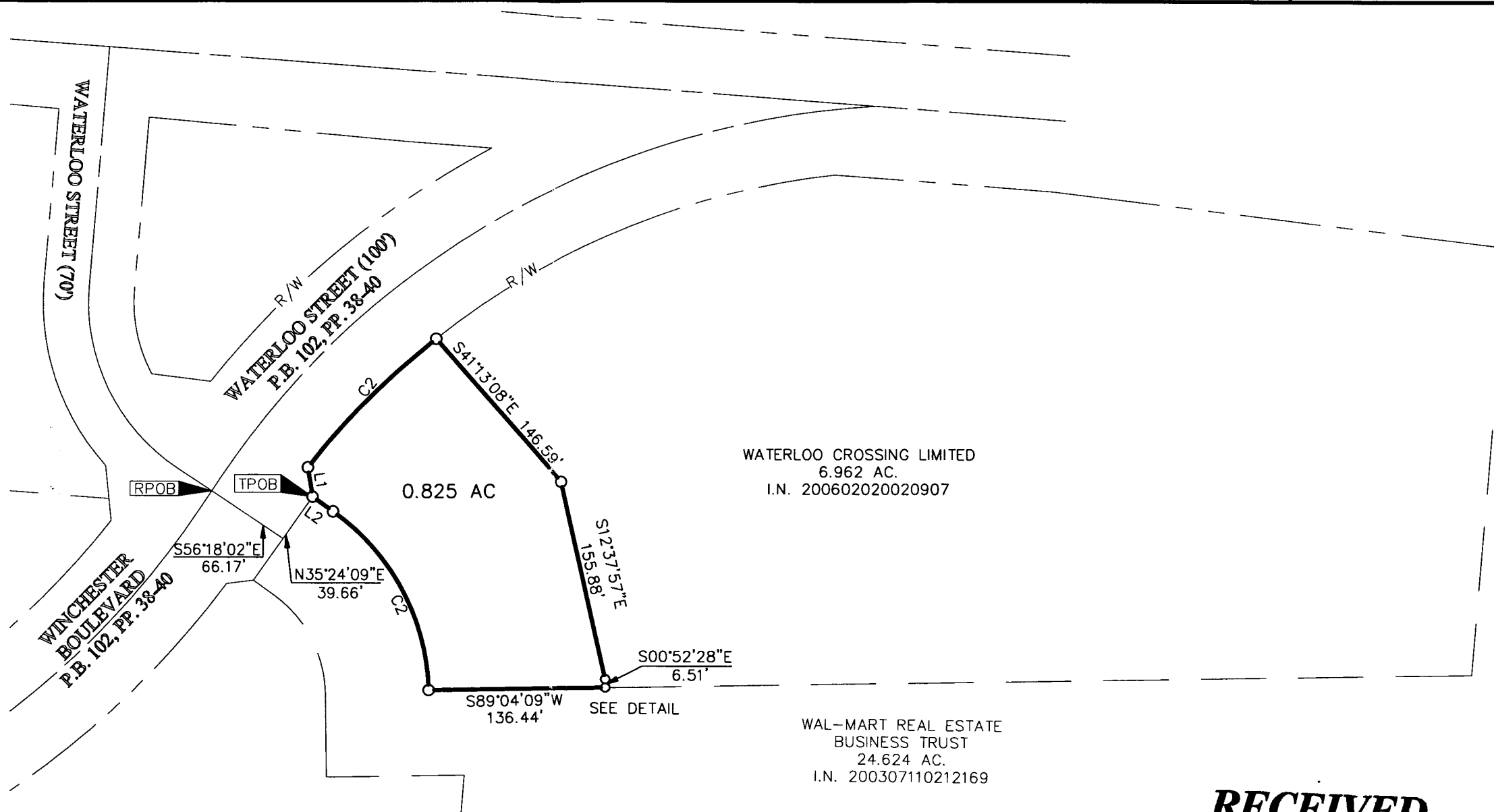
The Bearings shown hereon are based on the Ohio State Plane Coordinate System South Zone as per NAD83 (1986 Adjustment). Control for bearings was from coordinates of monuments FCGS 2270 (Reset) and FCGS 4452, having a bearing of North 04° 44' 36" East, established by the Franklin County Engineering Department, using Global Positioning System procedures and equipment.

SURVEY NOTE:

This survey was prepared using documents of record, prior plats of survey, and observed evidence located by an actual field survey.

FEMA NOTE:

According to the Federal Emergency Management Agency's Flood Insurance Map (dated June 17, 2008), the subject tract shown hereon lies within Zone X (areas determined to be outside of the 0.2% annual chance floodplain), Community Panel No. 39049C0452K.

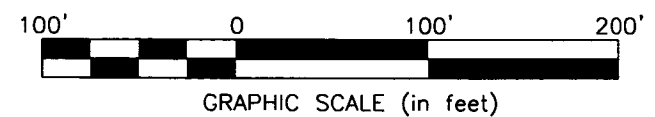


- = STONE FND.
- = MON. FND.
- = I.P. FND.
- = I.P. SET
- = MAG. NAIL FND.
- = MAG. NAIL SET
- ▲ = R.R. SPK. FND.
- △ = R.R. SPK. SET
- = P.K. NAIL FND.

I.P. Set are 13/16" I.D. iron pipe with cap inscribed EMHT INC

LINE TABLE		
LINE	BEARING	DISTANCE
L1	N09°14'04"W	22.95'
L2	N54°35'51"W	19.55'

CURVE TABLE					
CURVE	DELTA	RADIUS	ARC	CH BRG.	CH
C1	13°23'29"	600.00'	140.24'	N44°44'08"E	139.92'
C2	53°11'51"	174.18'	161.72'	N27°59'55"W	155.97'



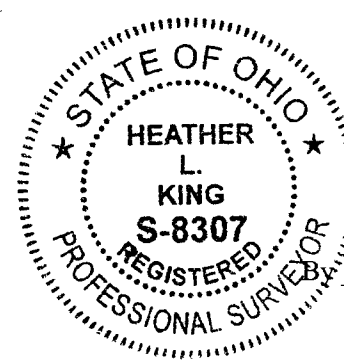
WATERLOO CROSSING LIMITED
 6.962 AC.
 I.N. 200602020020907

WAL-MART REAL ESTATE
 BUSINESS TRUST
 24.624 AC.
 I.N. 200307110212169

RECEIVED

MAY 27 2011

Franklin County Engineer
 Dean C. Ringle, P.E., P.S.



Heather L. King
 Professional Surveyor No. 8307

5/26/11
 Date

J:\20110652\20110652BNDY.DWG plotted by KING, HEATHER on 5/26/2011 7:49:30 PM last saved by KING on 5/26/2011 7:24:05 PM