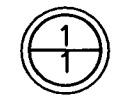


SURVEY OF A 5.977 ACRE TRACT

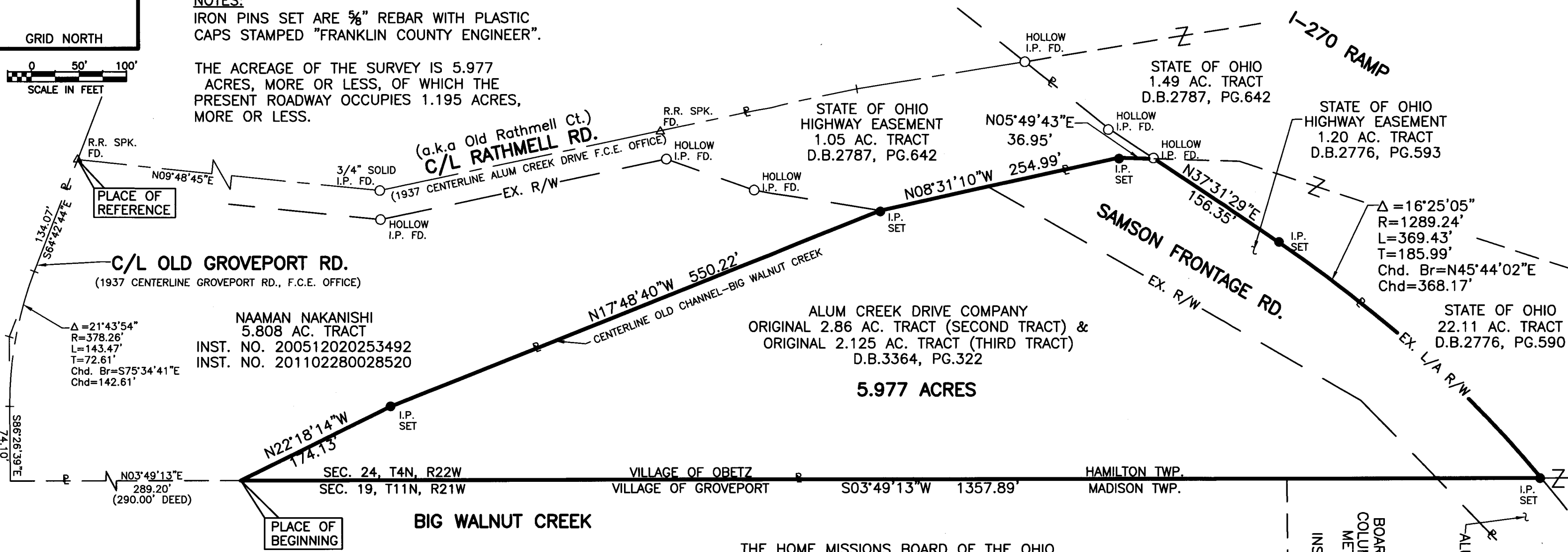
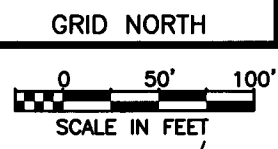
BEING A PART OF SECTION 24, TOWNSHIP 4 NORTH, RANGE 22 WEST,
CONGRESS LANDS EAST OF THE SCIOTO
VILLAGE OF OBETZ, FRANKLIN COUNTY, OHIO



NOTES:

IRON PINS SET ARE 5/8" REBAR WITH PLASTIC CAPS STAMPED "FRANKLIN COUNTY ENGINEER".

THE ACREAGE OF THE SURVEY IS 5.977 ACRES, MORE OR LESS, OF WHICH THE PRESENT ROADWAY OCCUPIES 1.195 ACRES, MORE OR LESS.



NAAMAN NAKANISHI
5.808 AC. TRACT
INST. NO. 200512020253492
INST. NO. 201102280028520

ALUM CREEK DRIVE COMPANY
ORIGINAL 2.86 AC. TRACT (SECOND TRACT) &
ORIGINAL 2.125 AC. TRACT (THIRD TRACT)
D.B.3364, PG.322

5.977 ACRES

STATE OF OHIO
HIGHWAY EASEMENT
1.20 AC. TRACT
D.B.2776, PG.593

STATE OF OHIO
22.11 AC. TRACT
D.B.2776, PG.590

THE HOME MISSIONS BOARD OF THE OHIO
CONFERENCE A.M.E. ZION CHURCH
25.822 AC. TRACT
D.B.2446, PG.282

BOARD OF PARK COMMISSIONERS
COLUMBUS AND FRANKLIN COUNTY
METROPOLITAN PARK DISTRICT
24.608 AC. TRACT
INST. NO. 200107200165083

ALUM CREEK DRIVE COMPANY
ORIGINAL 48 AC. TRACT
(FIRST TRACT)
D.B.3364, PG.322

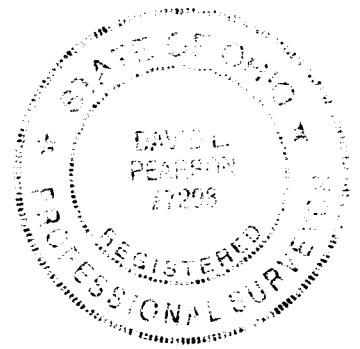
BASIS OF BEARINGS:

BEARINGS ARE BASED ON THE OHIO STATE PLANE COORDINATE SYSTEM, SOUTH ZONE AND NORTH AMERICAN DATUM OF 1983, (1986), AS ESTABLISHED FROM A GPS SURVEY PERFORMED BY STANTEC SURVEY DEPARTMENT IN 2009, OCCUPYING FRANKLIN COUNTY GEODETIC CONTROL MONUMENTS "FCGS 8820", AND "FCGS 9980 RESET", WITH A BEARING OF (N48°28'27"E).

THIS PLAT WAS PREPARED FROM AN ACTUAL FIELD SURVEY PERFORMED BY THE FRANKLIN COUNTY ENGINEER'S OFFICE IN FEBRUARY, 2011. ALONG WITH PUBLIC RECORDS ON FILE IN THE FRANKLIN COUNTY RECORDER'S OFFICE AND THE FRANKLIN COUNTY ENGINEER'S OFFICE

David L. Pearson
DAVID L. PEARSON
OHIO REGISTERED SURVEYOR NO. 7298

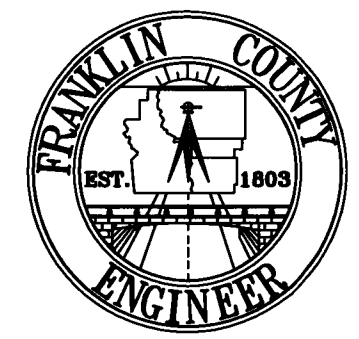
03/02/2011
DATE



RECEIVED

JUN 28 2011

Franklin County Engineer
Dean C. Ringle, P.E., P.S.



DATE: 03-02-11	DRAWING: SAMSON FRT.	
	DRAWN BY: DKT	
REVISIONS		
DATE	DESCRIPTION	BY