

# SURVEY OF ACREAGE PARCEL

## LOT 1, QUARTER TOWNSHIP 4, TOWNSHIP 1, RANGE 16

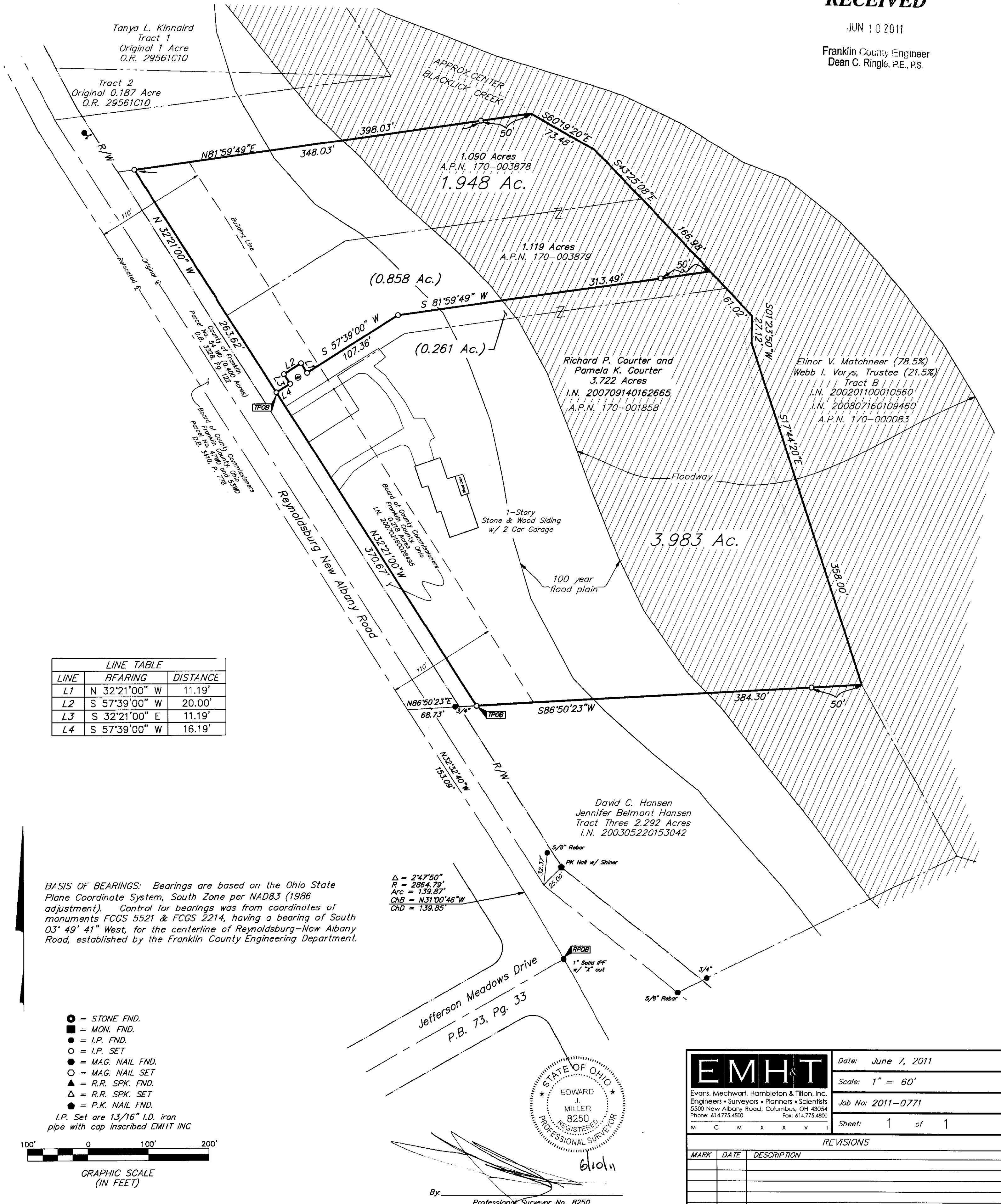
### UNITED STATES MILITARY DISTRICT

#### TOWNSHIP OF JEFFERSON, FRANKLIN COUNTY, OHIO

**RECEIVED**

JUN 10 2011

Franklin County Engineer  
Dean C. Ringle, P.E., P.S.

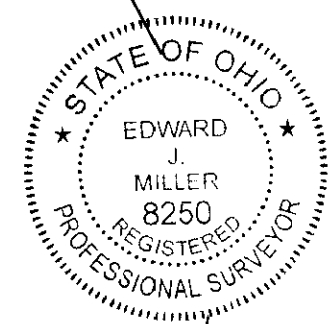
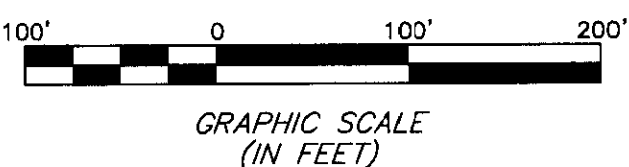


LINE	BEARING	DISTANCE
L1	N 32°21'00" W	11.19'
L2	S 57°39'00" W	20.00'
L3	S 32°21'00" E	11.19'
L4	S 57°39'00" W	16.19'

**BASIS OF BEARINGS:** Bearings are based on the Ohio State Plane Coordinate System, South Zone per NAD83 (1986 adjustment). Control for bearings was from coordinates of monuments FCGS 5521 & FCGS 2214, having a bearing of South 03° 49' 41" West, for the centerline of Reynoldsburg-New Albany Road, established by the Franklin County Engineering Department.

$\Delta = 2'47.50"$   
 $R = 2864.79'$   
 $Arc = 139.87'$   
 $ChB = N31°00'46"W$   
 $ChD = 139.85'$

- = STONE FND.
  - = MON. FND.
  - = I.P. FND.
  - = I.P. SET
  - = MAG. NAIL FND.
  - = MAG. NAIL SET
  - ▲ = R.R. SPK. FND.
  - △ = R.R. SPK. SET
  - = P.K. NAIL FND.
- I.P. Set are 1 3/16" I.D. iron pipe with cap inscribed EMHT INC



By: *[Signature]*  
Professional Surveyor No. 8250

	Date: June 7, 2011
	Scale: 1" = 60'
	Job No: 2011-0771
	Sheet: 1 of 1
REVISIONS	
MARK	DATE
DESCRIPTION	

I:\CHD\1A01\Project01\20110771\Boundary\_Survey\dwg\20110771-012.dwg (19/06/2011 2:06:56 PM) - Plotter: SCHMIDT - SavedBy: SCHMIDT [19/06/2011 2:24:29 PM]