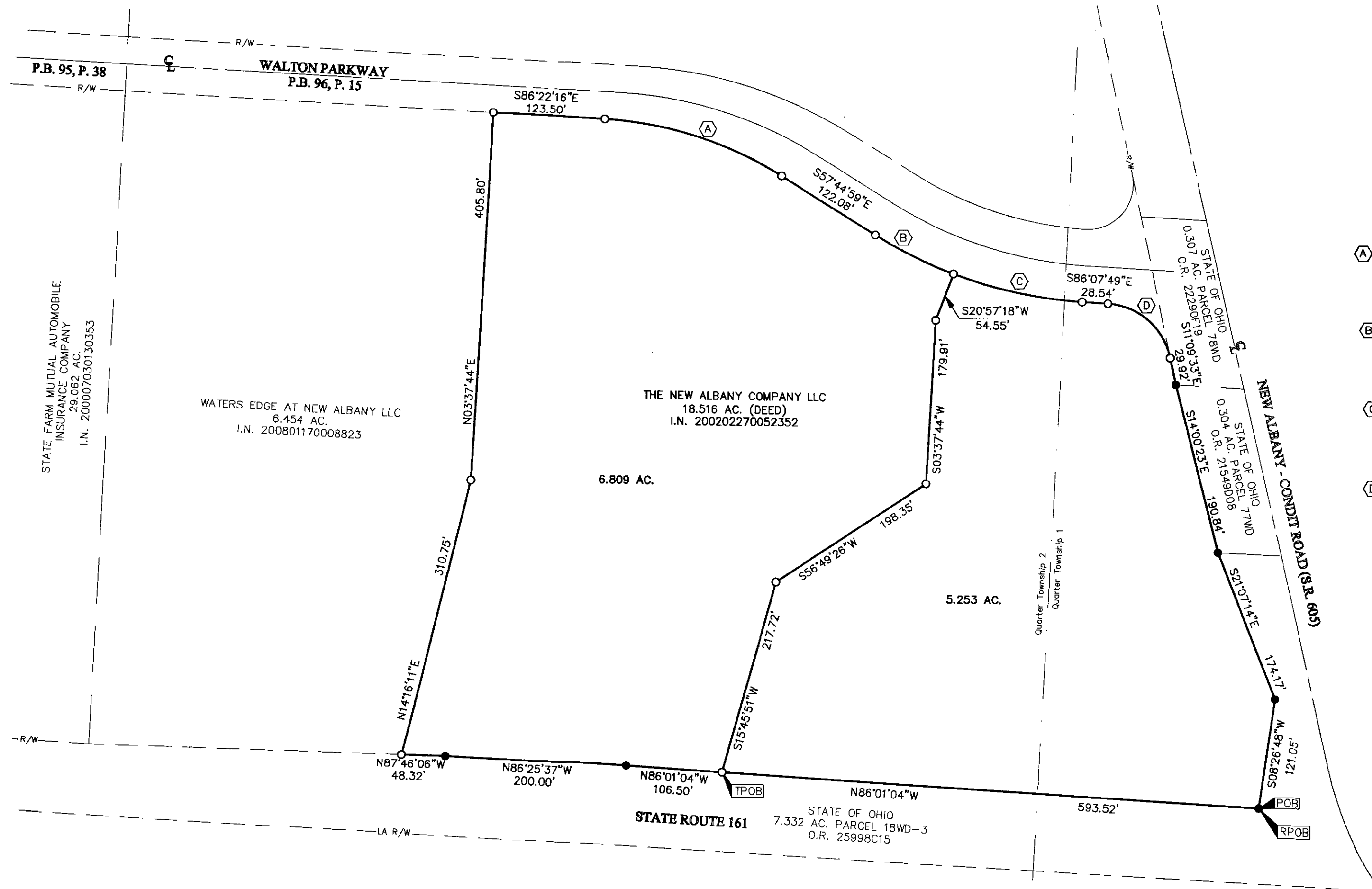


# SURVEY OF ACREAGE PARCELS

## SECTION 13, QUARTER TOWNSHIP 1 & 2, TOWNSHIP 2, RANGE 16


### UNITED STATES MILITARY LANDS

### CITY OF NEW ALBANY, COUNTY OF FRANKLIN, STATE OF OHIO



- (A) Δ=28°37'16"  
R=415.00'  
Arc=207.31'  
ChB=572°03'38"E  
ChD=205.16'
- (B) Δ=11°17'42"  
R=490.00'  
Arc=96.60'  
ChB=563°23'51"E  
ChD=96.44'
- (C) Δ=17°05'08"  
R=490.00'  
Arc=146.12'  
ChB=577°35'15"E  
ChD=145.58'
- (D) Δ=74°35'32"  
R=75.00'  
Arc=97.64'  
ChB=548°50'03"E  
ChD=90.89'



By  5/26/11  
Professional Surveyor No. 8250

- = STONE FND.
  - = MON. FND.
  - = 3/4" I.P. FND.
  - = I.P. SET
  - = MAG. NAIL FND.
  - = MAG. NAIL SET
  - ▲ = R.R. SPK. FND.
  - △ = R.R. SPK. SET
  - = P.K. NAIL FND.
- I.P. Set are 13/16" I.D. iron pipe with cap inscribed EMHT INC

**FEMA NOTE:**  
According to the Federal Emergency Management Agency's Flood Insurance Map (dated June 17, 2008), the subject parcel shown hereon lies within Zone X (areas determined to be outside 0.2% annual chance flood plain), Community Panel No. 39049C0202K.

**BASIS OF BEARINGS:** Bearings are based on the Ohio State Plane Coordinate System as per NAD83 South Zone (1986 Adjustment). Control for bearings was from coordinates of monuments FCGS 5574 and FCGS 5113, with a portion of Central College Road having a bearing of South 86° 09' 36" East, established by the Franklin County Engineering Department, using Global Positioning System procedures and equipment.

**NOTE:**  
This survey was prepared using documents of record, prior plats of survey, and observable field evidence.

**RECEIVED**  
MAY 26 2011  
Franklin County Engineer  
Dean C. Ringle, P.E., P.S.

<b>EMHT</b> Evans, Mechwart, Hambleton & Tilton, Inc. Engineers • Surveyors • Planners • Scientists 5500 New Albany Road, Columbus, OH 43054 Phone: 614.775.4500 Toll Free: 888.775.3648 emht.com	Date: May 24, 2011	
	Scale: 1" = 100'	
	Job No: 2010-1223	
	Sheet: 1 of 1	
REVISIONS		
MARK	DATE	DESCRIPTION

S:\2010\1223\20101223\DWG\20101223BNDY.DWG plotted by MASTON, JOHN on 5/25/2011 5:14:29 PM last saved by MASTON, JOHN on 5/25/2011 11:36:19 AM