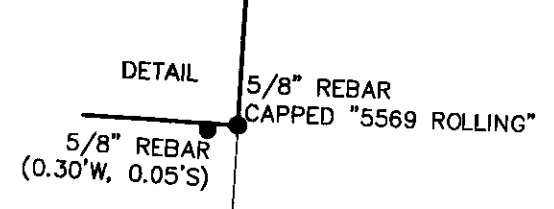
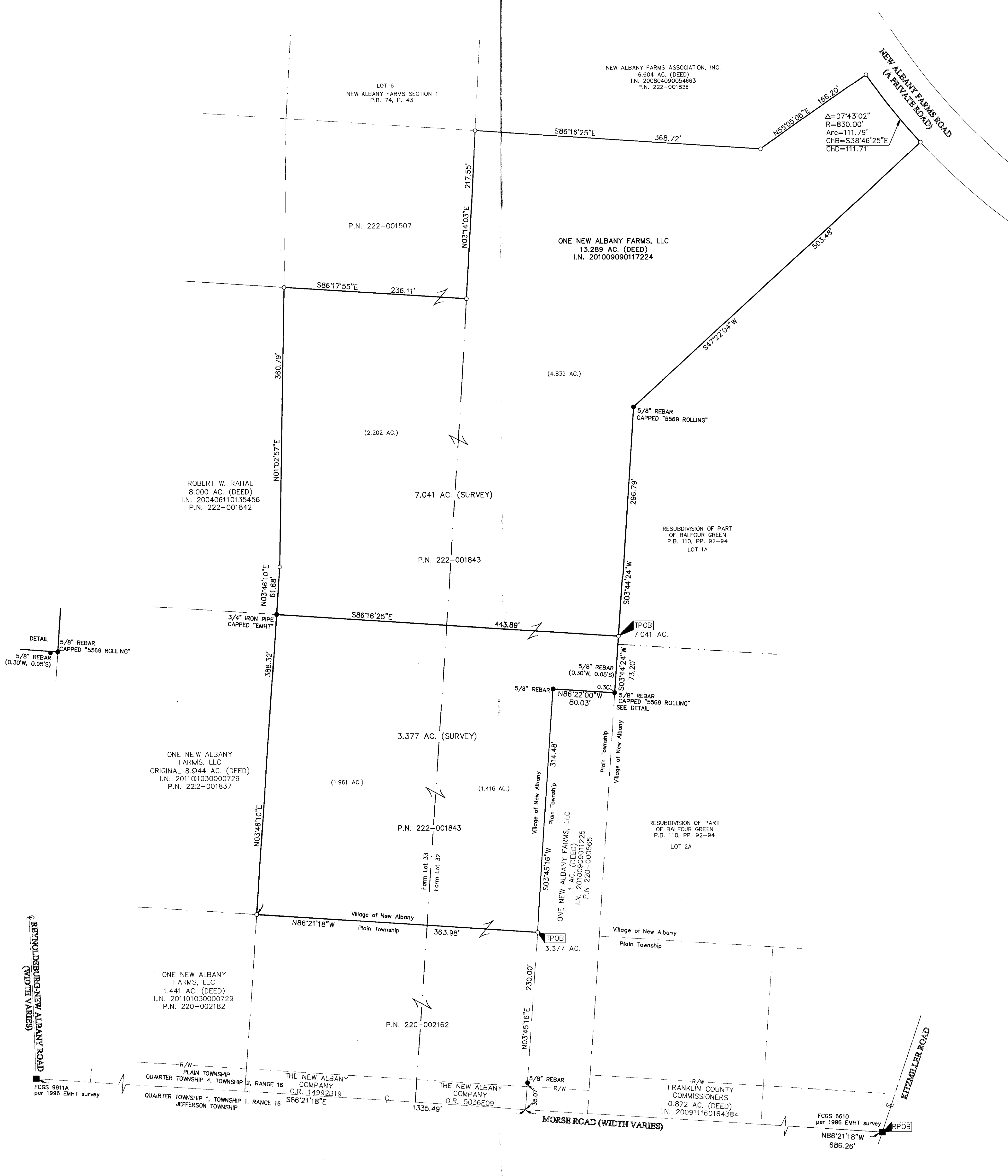
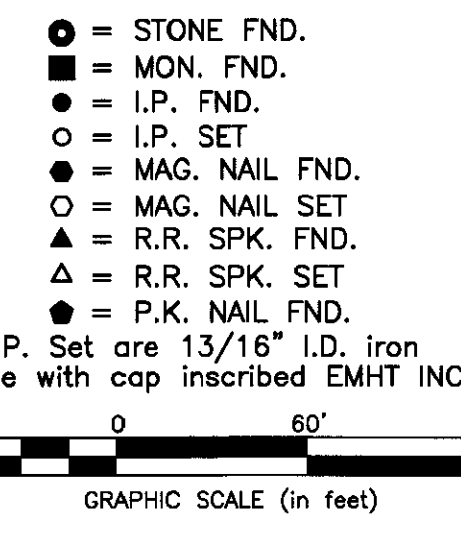


SURVEY OF ACREAGE PARCEL

FARM LOTS 32 AND 33, QUARTER TOWNSHIP 4, TOWNSHIP 2, RANGE 16
UNITED STATES MILITARY LANDS
VILLAGE OF NEW ALBANY, COUNTY OF FRANKLIN, STATE OF OHIO

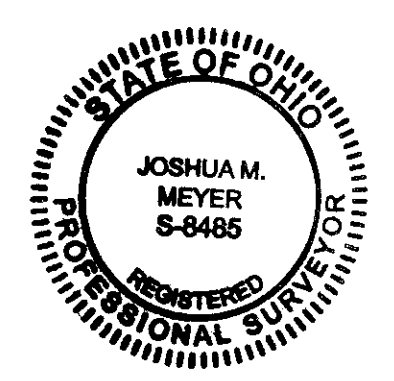


REYNOLDSBURG-NEW ALBANY ROAD
(WIDTH VARIES)



SURVEY NOTE:
This survey was prepared using documents of record, prior plats of survey, and observed evidence located by an actual field survey.

Basis of Bearings:
Bearings are based on the Ohio State Plane Coordinate System South Zone as per NAD83 (1986 adjustment). Control for bearings was from coordinates of monuments FRANK 69 and 169 established by the Franklin County Engineering Department, using global positioning system procedures and equipment, in which the bearing is South 88° 02' 16\"/>



By Joshua M. Meyer 4-7-2011
Professional Surveyor No. 8485 Date
Joshua M. Meyer

RECEIVED
APR 12 2011
Franklin County Engineer
Dean C. Ringle, P.E., P.S.

EMHT Evans, Mechwart, Hambleton & Tilton, Inc. Engineers • Surveyors • Planners • Scientists 5500 New Albany Road, Columbus, OH 43054 Phone: 614.773.4520 Toll free: 888.773.3448 emht.com	Date: April 7, 2011 Scale: 1" = 60' Job No: 2011-0407 Sheet: 1 of 1	
REVISIONS		
MARK	DATE	DESCRIPTION