

TOPOGRAPHIC & BOUNDARY SURVEY

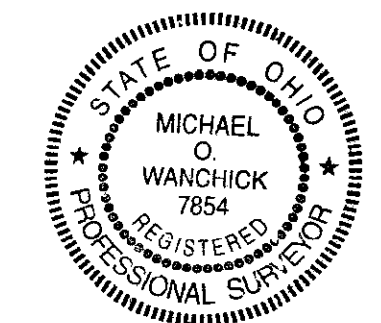
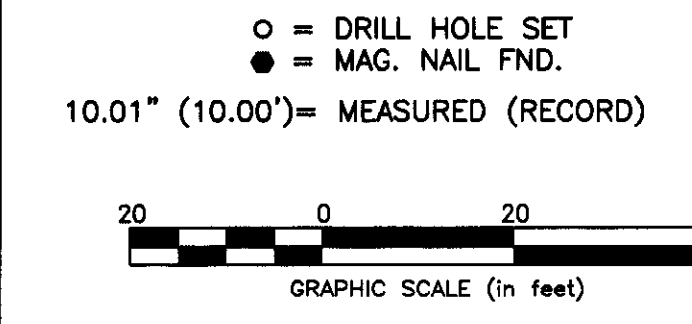
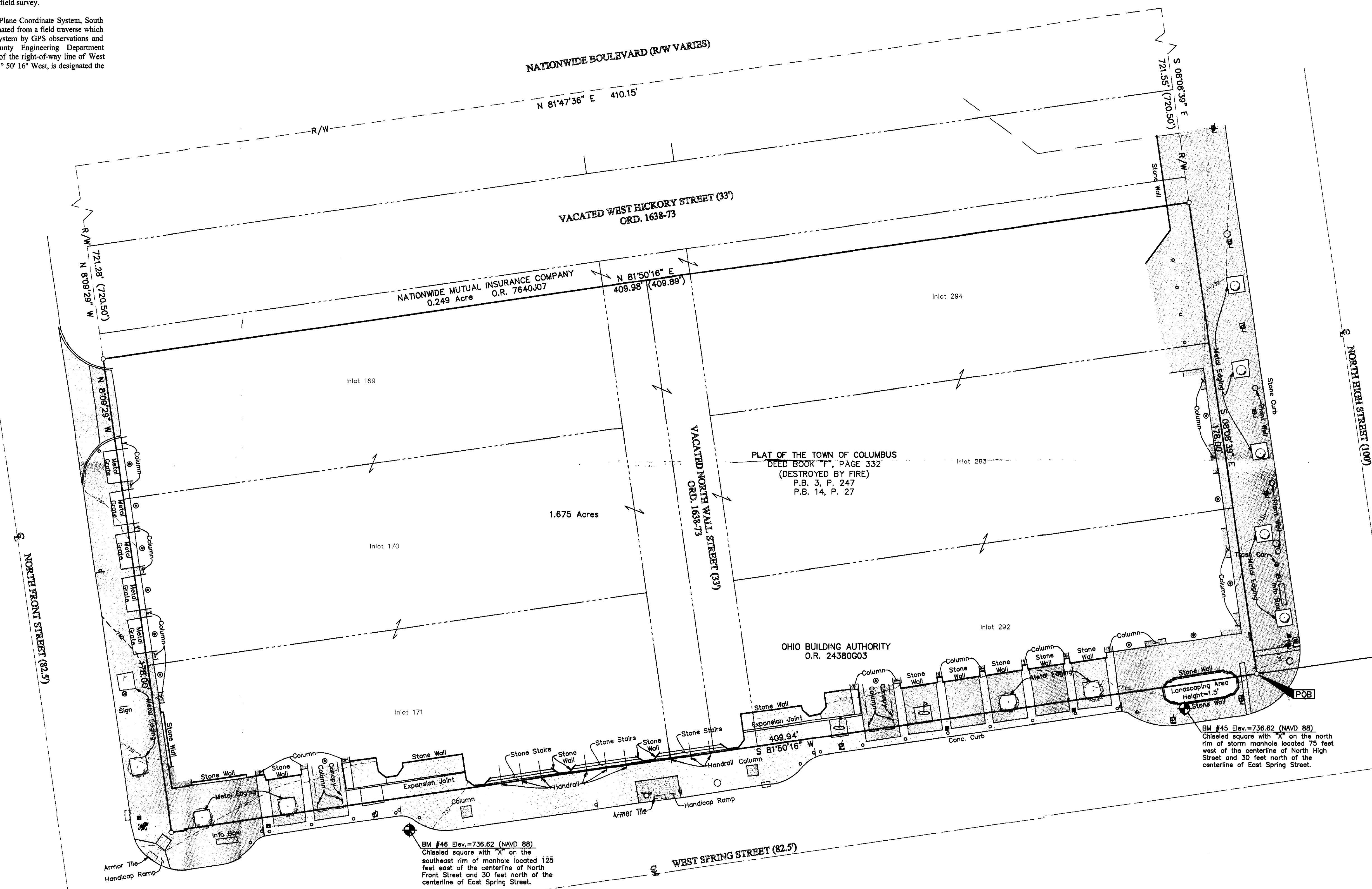
INLOTS 170, 171, 292, 293 & PARTS OF INLOTS 169, 294
PLAT OF TOWN OF COLUMBUS, DEED BOOK "F", PAGE 332 (DESTROYED BY FIRE)
PLAT BOOK 3, PAGE 247 AND PLAT BOOK 14, PAGE 27
CITY OF COLUMBUS, COUNTY OF FRANKLIN, STATE OF OHIO

SURVEY NOTES:
This survey was prepared using documents of record, prior plats of survey, and observed evidence located by an actual field survey.

The bearings are based on the Ohio State Plane Coordinate System, South Zone, NAD83 (1986). Said bearings originated from a field traverse which was tied (referenced) to said coordinate system by GPS observations and observations of selected Franklin County Engineering Department monuments 4-83 and 13-83. The portion of the right-of-way line of West Spring Street, having a bearing of South 81° 50' 16" West, is designated the "basis of bearing" for this survey.

Occupation, in general, fits survey.

LEGEND	
	Traffic Lighting Control Box
	Metal Traffic Signal Pole
	Light Pole
	Electric Pull Box
	Fire Hydrant
	Water Valve
	Sanitary Manhole
	Curb Inlet
	Storm Manhole
	Flag Pole
	Sign
	Bollard
	Stump
	Ornamental Tree
	Brick Walk
	Concrete
	Stone Walk
	Indicates walkways below building overhang



By *Michael O. Wanchick* 1/26/11
Michael O. Wanchick
Professional Surveyor No. 7854

RECEIVED
JAN 31 2011
Franklin County Engineer
Dean C. Ringle, P.E., P.S.

EMHT Evans, Machiwart, Hamilton & Tilton, Inc. Engineers • Surveyors • Planners • Scientists 5900 New Albany Road, Columbus, OH 43054 Phone: 614.775.4500 Fax: 614.775.3648 emht.com		Date: January 26, 2010
Scale: 1" = 20'		Job No: 2011-0011
Sheet: 1 of 1		REVISIONS
MARK	DATE	DESCRIPTION