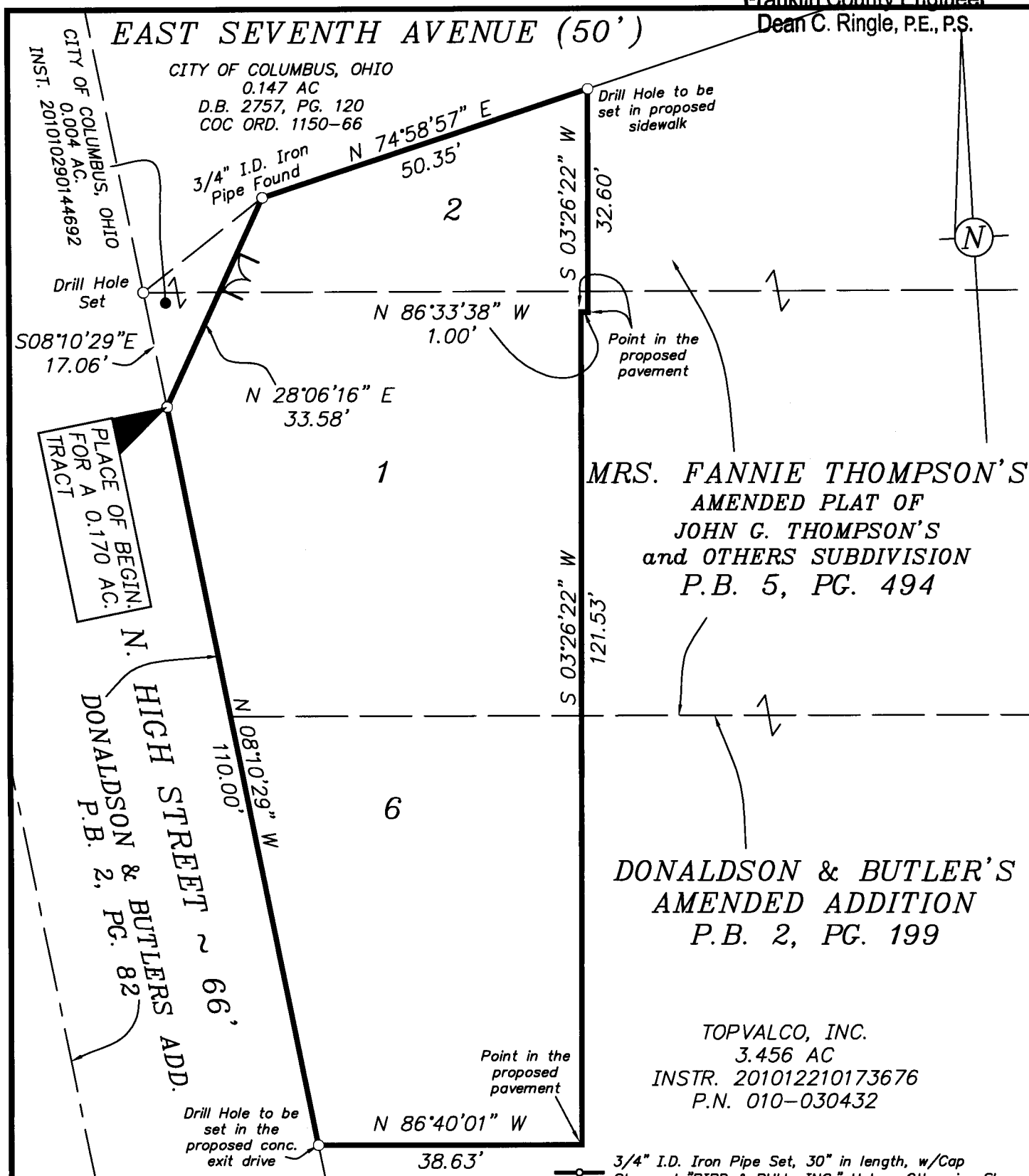


RECEIVED

JAN 27 2011

Franklin County Engineer
Dean C. Ringle, P.E., P.S.



BASIS OF BEARINGS: The west line of Courtland Avenue, Being S 03° 26' 31" W, as transferred from a GPS survey of Franklin County Monuments FGCS "GRANDVIEW" and FGCS 5028 performed by the Franklin County Engineers Office in 1991, and is, based on the NAD83, 1986 Adjustment, Ohio State Plane Coordinate System, South Zone.

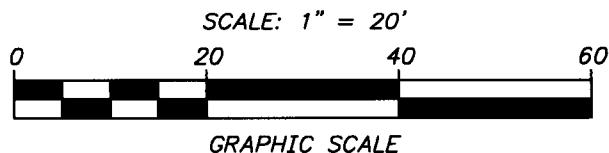


EXHIBIT FOR A 0.170 ACRE TRACT
AT THE SE CORNER OF HIGH ST. AND E. SEVENTH AVE.,
CITY OF COLUMBUS, FRANKLIN CO., OHIO
(QTR. TWP. 3, T. 1 N., R. 18 W., U.S.M.L.)

SCALE: 1" = 20'



C.F. Bird & R.J. Bull, Inc.
2875 W. Dublin-Granville Rd.
Columbus, Ohio 43235



JANUARY 20, 2011
Kevin L. Baxter
Kevin L. Baxter ~ Ohio Surveyor No. 7697