



Evans, Mechwart, Hambleton & Tilton, Inc.
 Engineers • Surveyors • Planners • Scientists
 5500 New Albany Road, Columbus, OH 43054
 Phone: 614.775.4500 Toll Free: 888.775.3648
 emht.com

SURVEY OF ACREAGE PARCEL

SURVEY NUMBER 1388

VIRGINIA MILITARY DISTRICT

CITY OF GROVE CITY, COUNTY OF FRANKLIN, STATE OF OHIO

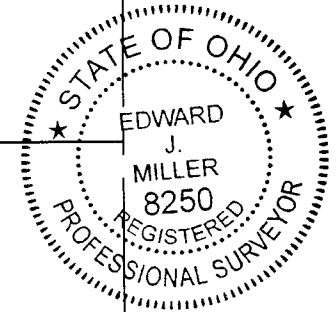
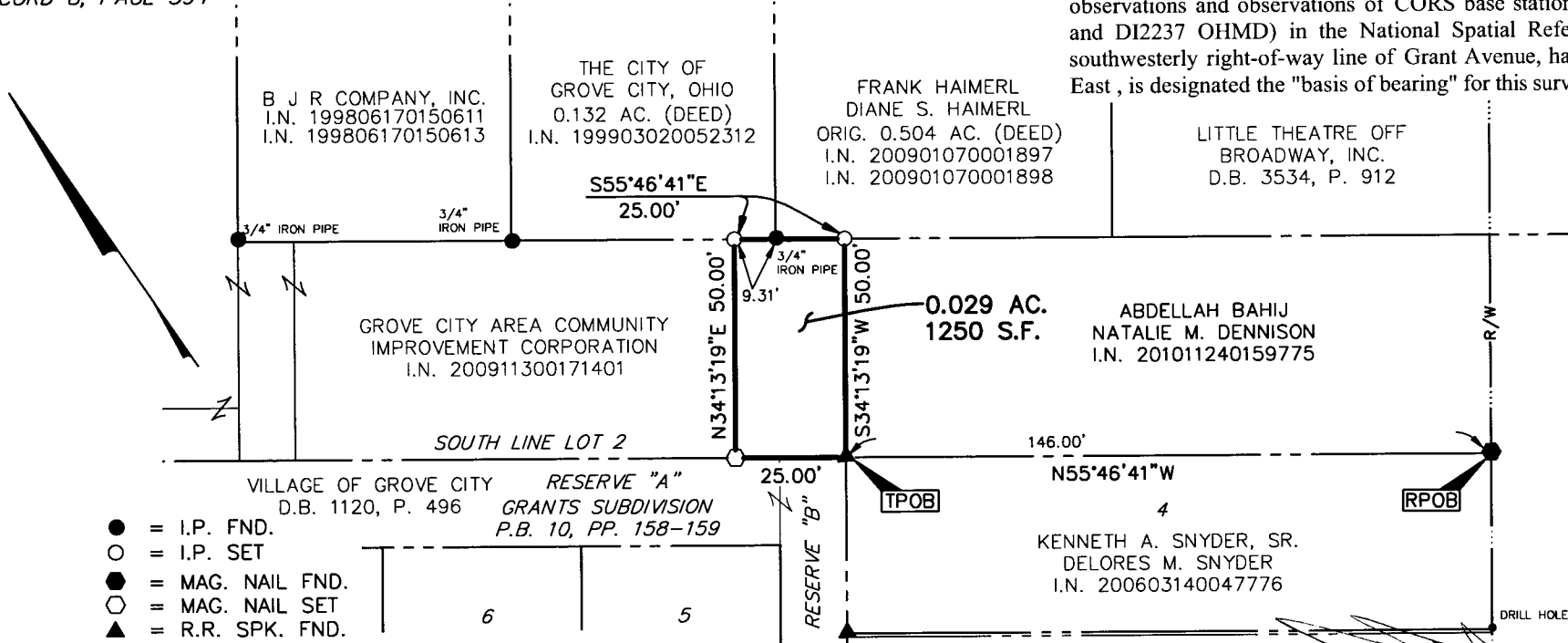
Date: March 22, 2011

Scale: 1" = 40'

Job No. 2011-0038

LOT 2 OF A SUBDIVISION MADE IN THE CASE OF ELIZABETH C. BRECK AGAINST WILLIAM BRECK IN PARTITION IN THE SUPERIOR COURT, FRANKLIN COUNTY, OHIO OF RECORD IN COMPLETE RECORD 8, PAGE 394

BASIS OF BEARINGS: The bearings shown on this survey are based on the Ohio State Plane Coordinate System, South Zone, NAD83 (CORS96). Said bearings originated from a field traverse which was referenced to said coordinate system by GPS observations and observations of CORS base stations (AJ7184 COLB, D11686 OHUN, and D12237 OHMD) in the National Spatial Reference System. The portion of the southwesterly right-of-way line of Grant Avenue, having a bearing of South 55° 46' 41" East, is designated the "basis of bearing" for this survey.



- = I.P. FND.
- = I.P. SET
- = MAG. NAIL FND.
- = MAG. NAIL SET
- ▲ = R.R. SPK. FND.

I.P. Set are 13/16" I.D. iron pipe with cap inscribed EMHT INC



GRAPHIC SCALE (in feet)

Note: This survey was prepared using documents of record, prior plats of survey, and observable field evidence.

Note: Occupation, in general, fits survey.

By Edward J. Miller
 Professional Surveyor No. 8250

J:\20110038\20110038SV\DWG\20110038BNDY01B.DWG plotted by GEIGER, STEVEN on 3/21/2011 5:01:02 PM last saved by SGEIGER on 3/21/2011 4:25:43 PM
 Xrefs:

RECEIVED

MAR 23 2011

Franklin County Engineer
 Dean C. Ringle, P.E., P.S.