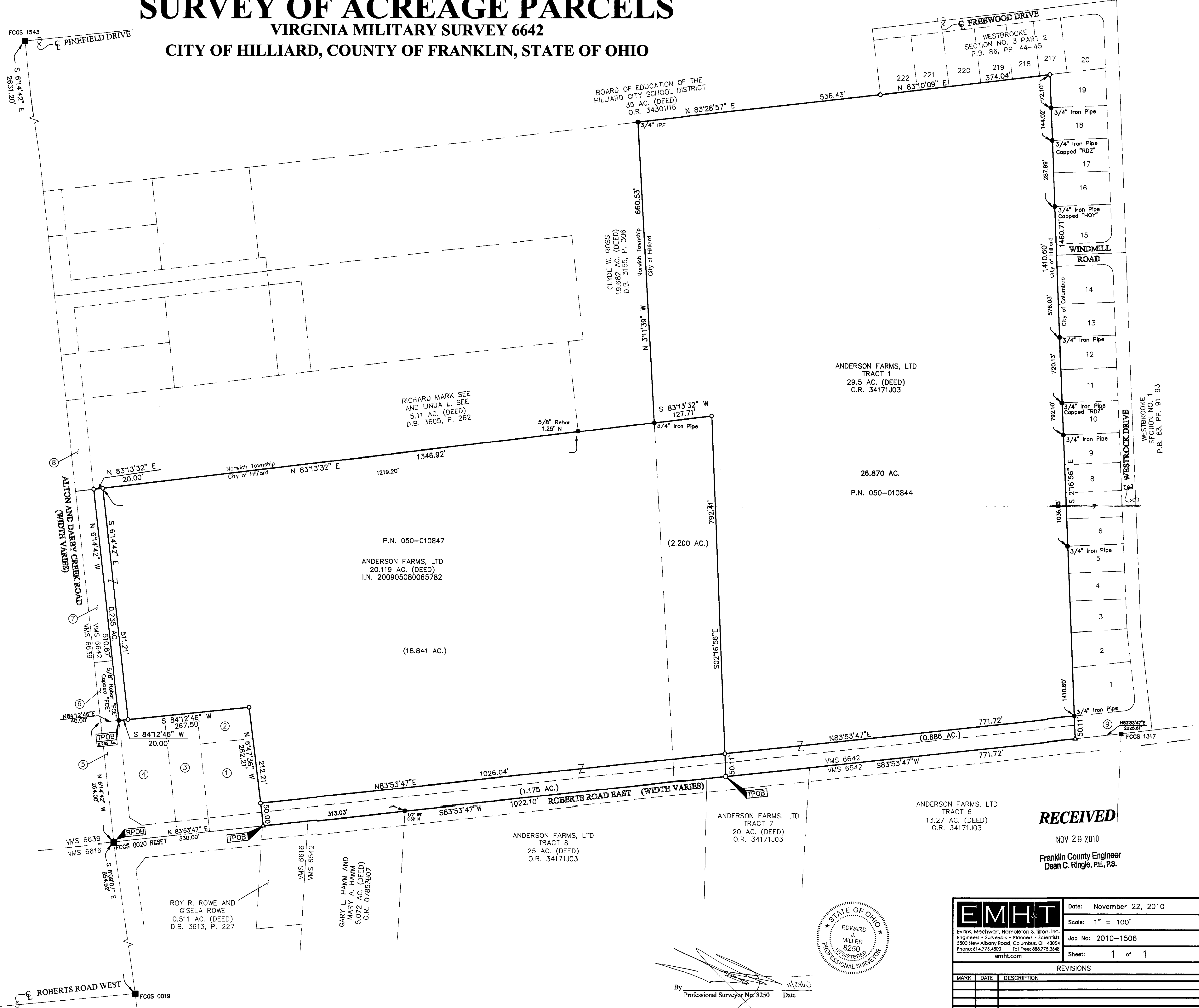


SURVEY OF ACREAGE PARCELS

VIRGINIA MILITARY SURVEY 6642

CITY OF HILLIARD, COUNTY OF FRANKLIN, STATE OF OHIO

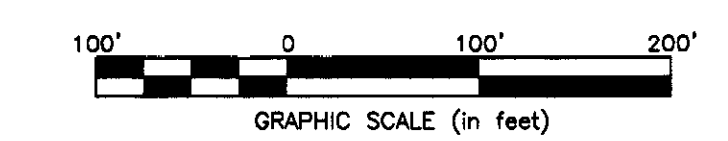
- ① HOMEWOOD CORPORATION
0.518 AC. (DEED)
I.N. 200803050033792
- ② HOMEWOOD CORPORATION
0.185 AC. (DEED)
I.N. 200803050033791
- ③ HOMEWOOD CORPORATION
0.435 AC. (DEED)
I.N. 200306190185928
- ④ HOMEWOOD CORPORATION
0.847 AC. (DEED)
PARCEL TWO
O.R. 27952803
- ⑤ FRANKLIN COUNTY COMMISSIONERS
0.317 AC. (DEED)
PARCEL NO. 58-WD
I.N. 199812070314210
- ⑥ FRANKLIN COUNTY COMMISSIONERS
0.121 AC. (DEED)
PARCEL NO. 51-WD
I.N. 199812070314208
- ⑦ FRANKLIN COUNTY COMMISSIONERS
0.348 AC. (DEED)
PARCEL NO. 61-WD-1
I.N. 199812070314208
- ⑧ FRANKLIN COUNTY COMMISSIONERS
0.184 AC. (DEED)
PARCEL NO. 63-WD
I.N. 199812310337405
- ⑨ CITY OF COLUMBUS
0.351 AC. (DEED)
O.R. 26939J01



Reference: Centerline Survey Plat Alton & Darby Creek RD and Roberts Road East, Franklin County Engineers, 10/7/2004, 11/7/2007. Other references as shown.

BASIS OF BEARINGS:
The bearings shown hereon are based on the Ohio State Plane Coordinate System, South Zone, NAD83 (1986 Adjustment). Control for bearings was from coordinates of monuments FCGS 1543 and FCGS 0020 Reset, having a bearing of North 06°14'42" West, established by the Franklin County Engineering Department, using Global Positioning System procedures and equipment.

- = STONE FND.
 - = MON. FND.
 - = I.P. FND.
 - = I.P. SET
 - = MAG. NAIL FND.
 - = MAG. NAIL SET
 - ▲ = R.R. SPK. FND.
 - = R.R. SPK. SET
 - = P.K. NAIL FND.
- I.P. Set are 13/16" I.D. iron pipe with cap inscribed EMHT INC



RECEIVED

NOV 29 2010

Franklin County Engineer
Dean C. Ringle, P.E., P.S.



By _____
Professional Surveyor No. 8250 Date _____

EMHT		Date: November 22, 2010
Edward J. Miller Registered Professional Surveyor		Scale: 1" = 100'
Job No: 2010-1506		Sheet: 1 of 1
REVISIONS		
MARK	DATE	DESCRIPTION