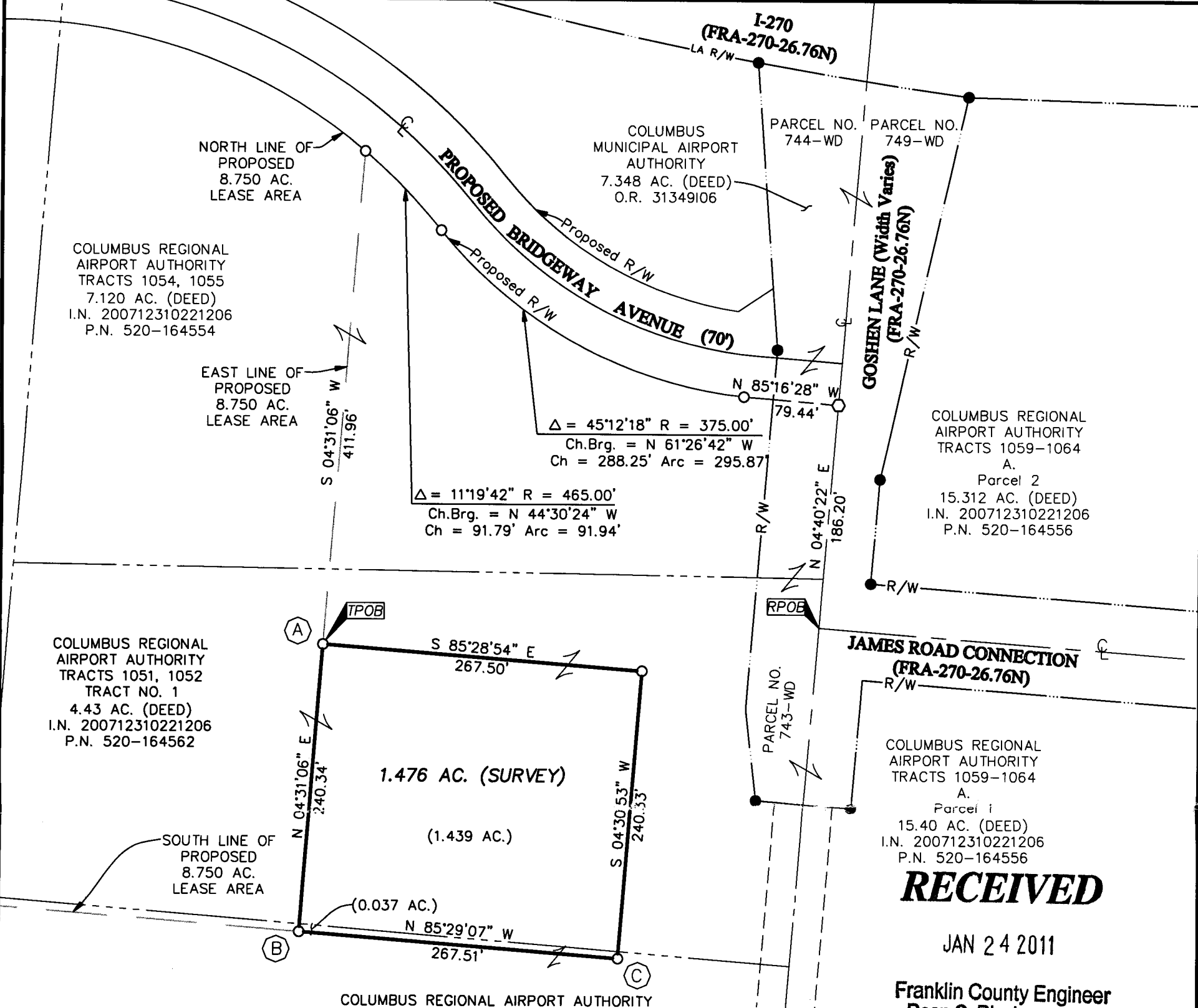


**EMH&T**  
 Evans, Mechwart, Hambleton & Tilton, Inc.  
 Engineers • Surveyors • Planners • Scientists  
 5500 New Albany Road, Columbus, OH 43054  
 Phone: 614.775.4500 Toll Free: 888.775.3648  
 emht.com

**LEASE EXHIBIT**  
 QUARTER TOWNSHIP 4, TOWNSHIP 1, RANGE 17  
 UNITED STATES MILITARY LANDS  
 CITY OF COLUMBUS, COUNTY OF FRANKLIN, STATE OF OHIO

Date: January 21, 2011 Job No. 2010-0605 Scale: 1" = 100'



**RECEIVED**

JAN 24 2011

Franklin County Engineer  
Dean C. Ringle, P.E., P.S.

**SURVEY NOTE:**  
 Occupation, in general, fits survey.

**SURVEY NOTE:**  
 This Lease Exhibit was prepared using documents of record, prior plats of survey, and observed evidence located by an actual survey.

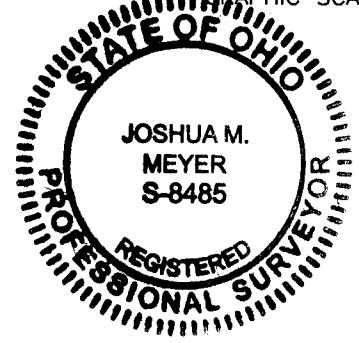
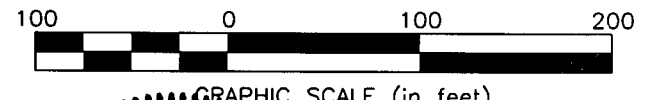
**BASIS OF BEARINGS:**  
 The bearings shown on this plat are based on the Ohio State Plane Coordinate System, South Zone, NAD83 (1986). Said bearings originated from a field traverse which was tied (referenced) to said coordinate system by GPS observations and observations of selected Franklin County monuments FRANK 65 and FRANK 165. The portion of the centerline of Goshen Lane, having a bearing of N 04° 40' 22" E is designated the "basis of bearing" for this survey.

**NOTE:**  
 The westerly line of the proposed 1.476 acre lease area is contiguous with the easterly line of the proposed 8.750 acre lease area.

- = STONE FND.
  - = MON. FND.
  - = I.P. FND.
  - = I.P. SET
  - = MAG. NAIL FND.
  - = MAG. NAIL SET
  - ▲ = R.R. SPK. FND.
  - △ = R.R. SPK. SET
  - = P.K. NAIL FND.
- I.P. Set are 13/16" I.D. iron pipe with cap inscribed EMHT INC

STATE PLANE COORDINATES (GROUND)**		PCIA LOCAL COORDINATES	
(A)	N 731164.4853 E 1857513.7242	(A)	N 8332.2037 E 5552.9971
(B)	N 730924.8867 E 1857494.7906	(B)	N 8091.8584 E 5552.7253
(C)	N 730903.8293 E 1857761.4737	(C)	N 8091.5723 E 5820.2383
FRANK 65	N 731729.451 E 1858861.411	FRANK 65	N 9000.0857 E 6852.7277
COC 40-82	N 730850.320 E 1852899.693	COC 40-82	N 7660.7152 E 977.3132

\*\*The coordinates shown on this map are based on the Ohio State Plane Coordinate System, South Zone, NAD 83 (1986). Said coordinates originated from a field traverse which was tied (referenced) to said coordinate system by GPS observations of Franklin County Engineering Department monuments FRANK65, and FRANK165. The grid to ground scale factor (1.0000384293) was applied at the location of: N 731750.468, E 1857130.533.



By Joshua M. Meyer 1-21-2011  
 Professional Surveyor No. 8485 Date  
 Joshua M. Meyer