



Evans, Mechwart, Hambleton & Tilton, Inc.  
 Engineers • Surveyors • Planners • Scientists  
 5500 New Albany Road, Columbus, OH 43054  
 Phone: 614.775.4500 Toll Free: 888.775.3648  
 emht.com

# SURVEY OF ACREAGE PARCELS

## SECTION 14, QUARTER TOWNSHIP 2, TOWNSHIP 2, RANGE 16

### UNITED STATES MILITARY LANDS

### CITY OF COLUMBUS, COUNTY OF FRANKLIN, STATE OF OHIO

Date: November 9, 2010

Scale: 1" = 100'

Job No: 2010-1477

**BASIS OF BEARINGS:** Bearings are based on the Ohio State Plane Coordinate System as per NAD83 (1986 Adjustment). Control for bearings was from coordinates of monuments Frank 5574 and Frank 5113, with Central College Road having a bearing of South 86° 09' 36" East, established by the Franklin County Engineering Department, using Global Positioning System procedures and equipment.

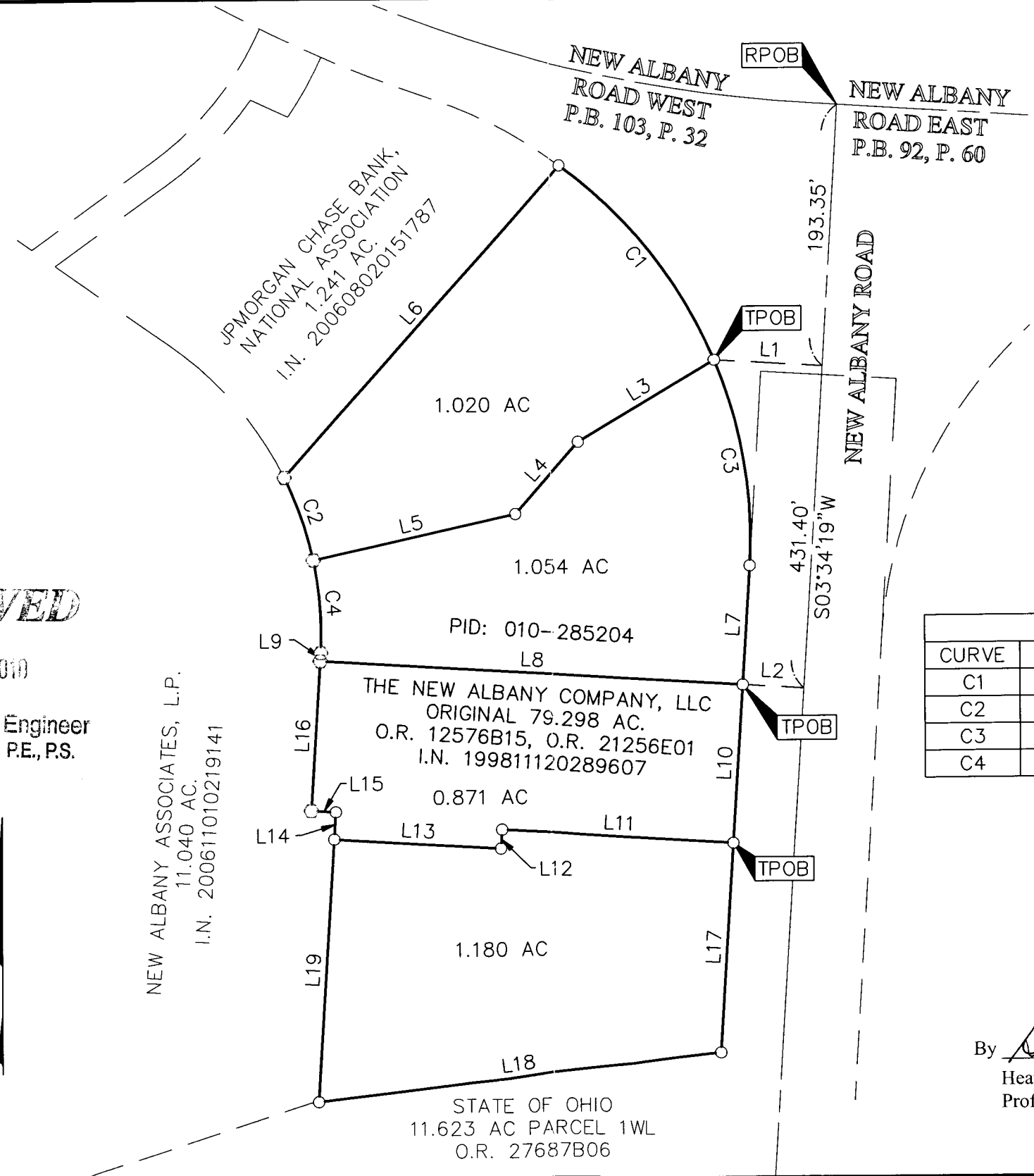
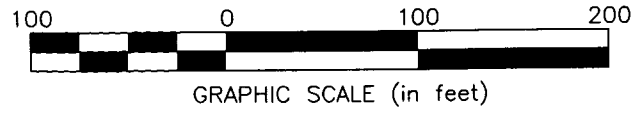
**SURVEY NOTE:**  
 This survey was prepared using documents of record, prior plats of survey, and observed evidence located by an actual field survey.

**FEMA NOTE:**  
 According to the Federal Emergency Management Agency's Flood Insurance Rate map (dated June 17, 2008), the subject parcels shown hereon lies Zone X (areas of 0.2% annual chance flood plain), Community Panel Nos. 39049C0202 K and 39049C0204 K.

**RECEIVED**  
 NOV 10 2010

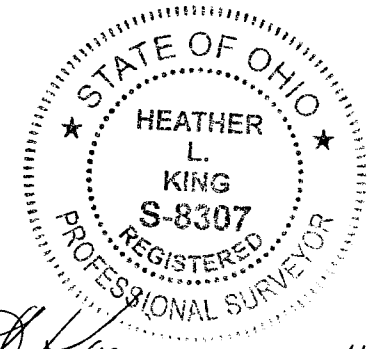
Franklin County Engineer  
 Dean C. Ringle, P.E., P.S.

- = STONE FND.
  - = MON. FND.
  - = I.P. FND.
  - = I.P. SET
  - = MAG. NAIL FND.
  - = MAG. NAIL SET
  - ▲ = R.R. SPK. FND.
  - △ = R.R. SPK. SET
  - = P.K. NAIL FND.
- I.P. Set are 13/16" I.D. iron pipe with cap inscribed EMHT INC



LINE TABLE		
LINE	BEARING	LENGTH
L1	S86°25'41"E	79.66
L2	S86°25'41"E	45.00
L3	N59°06'27"E	116.56
L4	N41°28'32"E	70.81
L5	N77°22'13"E	151.92
L6	N41°28'32"E	306.80
L7	S03°34'19"W	87.86
L8	N86°25'30"W	310.70
L9	N03°34'10"E	6.00
L10	S03°34'19"W	116.99
L11	S86°25'44"E	170.33
L12	N03°34'16"E	14.00
L13	S86°25'44"E	122.37
L14	N03°34'19"E	20.19
L15	N86°25'41"W	18.00
L16	N03°34'10"E	110.82
L17	S03°34'19"W	155.04
L18	S83°20'41"W	297.43
L19	N03°34'19"E	193.84

CURVE TABLE					
CURVE	DELTA	RADIUS	ARC	CH BRG	CH
C1	31°06'29"	342.70'	186.07'	S37°58'29"E	183.79'
C2	14°17'16"	260.00'	64.84'	N19°03'56"W	64.67'
C3	25°59'33"	342.70'	155.47'	S09°25'27"E	154.14'
C4	15°07'56"	260.00'	68.67'	N04°21'20"W	68.47'



By Heather L. King Date 11/9/10  
 Heather L. King  
 Professional Surveyor No. 8307