

J:\20100336\DWG\04SHEETS\VR-W\100336B\3.DWG plotted by GEIGER, STEVEN on 2/15/2011 11:56:10 AM last saved by SCEIGER on 2/15/2011 11:56:01 AM
Xrefs: 00336-CS-REFR-N.DWG & 00336-CS-REFR-E.DWG



Evans, Mechwart, Hambleton & Tilton, Inc.
Engineers • Surveyors • Planners • Scientists
5500 New Albany Road, Columbus, OH 43054
Phone: 614.775.4500 Toll Free: 888.775.3648
emht.com

SURVEY OF ACREAGE PARCEL

SURVEY NUMBER 6840

VIRGINIA MILITARY DISTRICT

TOWNSHIP OF JACKSON AND CITY OF GROVE CITY

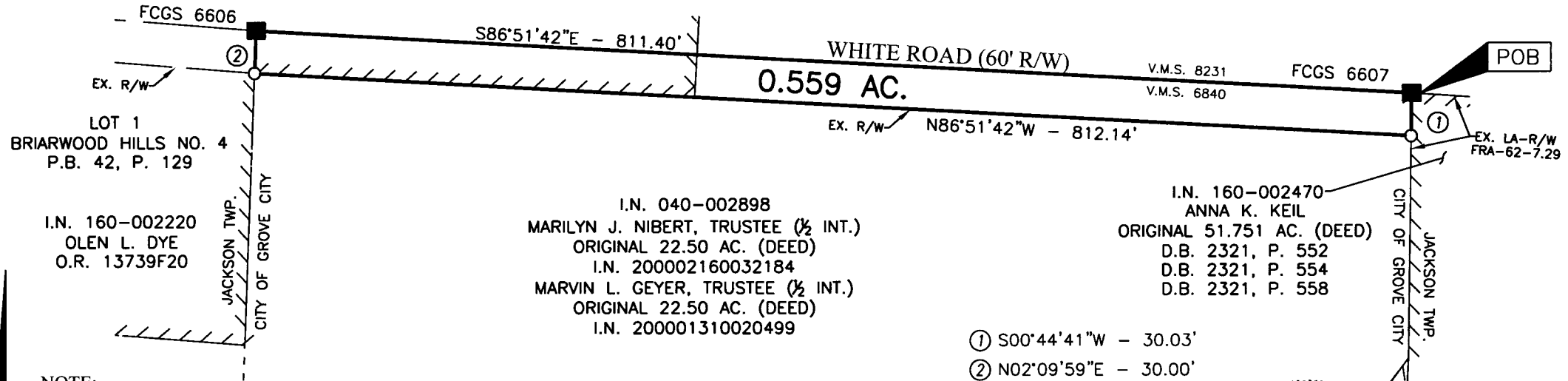
COUNTY OF FRANKLIN, STATE OF OHIO

H-1-C

Date: February 14, 2011

Scale: 1" = 100'

Job No. 2010-0336



LOT 1
BRIARWOOD HILLS NO. 4
P.B. 42, P. 129

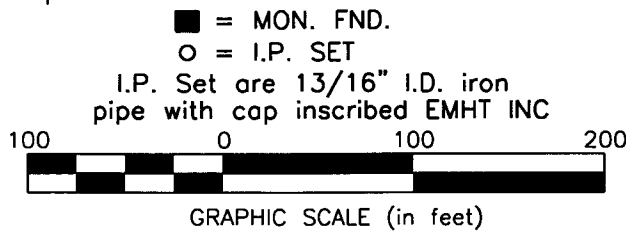
I.N. 160-002220
OLEN L. DYE
O.R. 13739F20

I.N. 040-002898
MARILYN J. NIBERT, TRUSTEE (½ INT.)
ORIGINAL 22.50 AC. (DEED)
I.N. 200002160032184
MARVIN L. GEYER, TRUSTEE (½ INT.)
ORIGINAL 22.50 AC. (DEED)
I.N. 200001310020499

I.N. 160-002470
ANNA K. KEIL
ORIGINAL 51.751 AC. (DEED)
D.B. 2321, P. 552
D.B. 2321, P. 554
D.B. 2321, P. 558

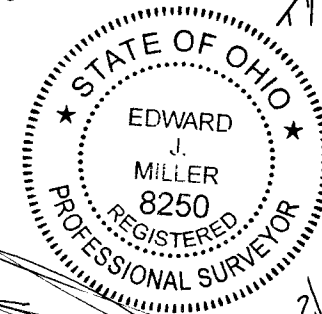
NOTE:
Occupation, in general, fits survey.

SURVEY NOTE:
This survey was prepared using documents of record, prior plats of survey, and observed evidence located by an actual field survey.



BASIS OF BEARINGS:
The Bearings shown hereon are based on the Ohio State Plane Coordinate System, South Zone per NAD83 (1986 Adjustment). Control for bearings was from coordinates of monuments FCGS 6633 and FCGS 0025. The portion of the centerline of White Road between monuments FCGS 6605 and FCGS 6606, having a bearing of South 85° 28' 28" East and monumented as shown hereon, is designated the "basis of bearing" for this survey.

- ① S00°44'41"W - 30.03'
- ② N02°09'59"E - 30.00'



By Edward J. Miller Professional Surveyor No. 8250
Date _____

RECEIVED

FEB 16 2011

Franklin County Engineer
Dean C. Ringle, P.E., P.S.